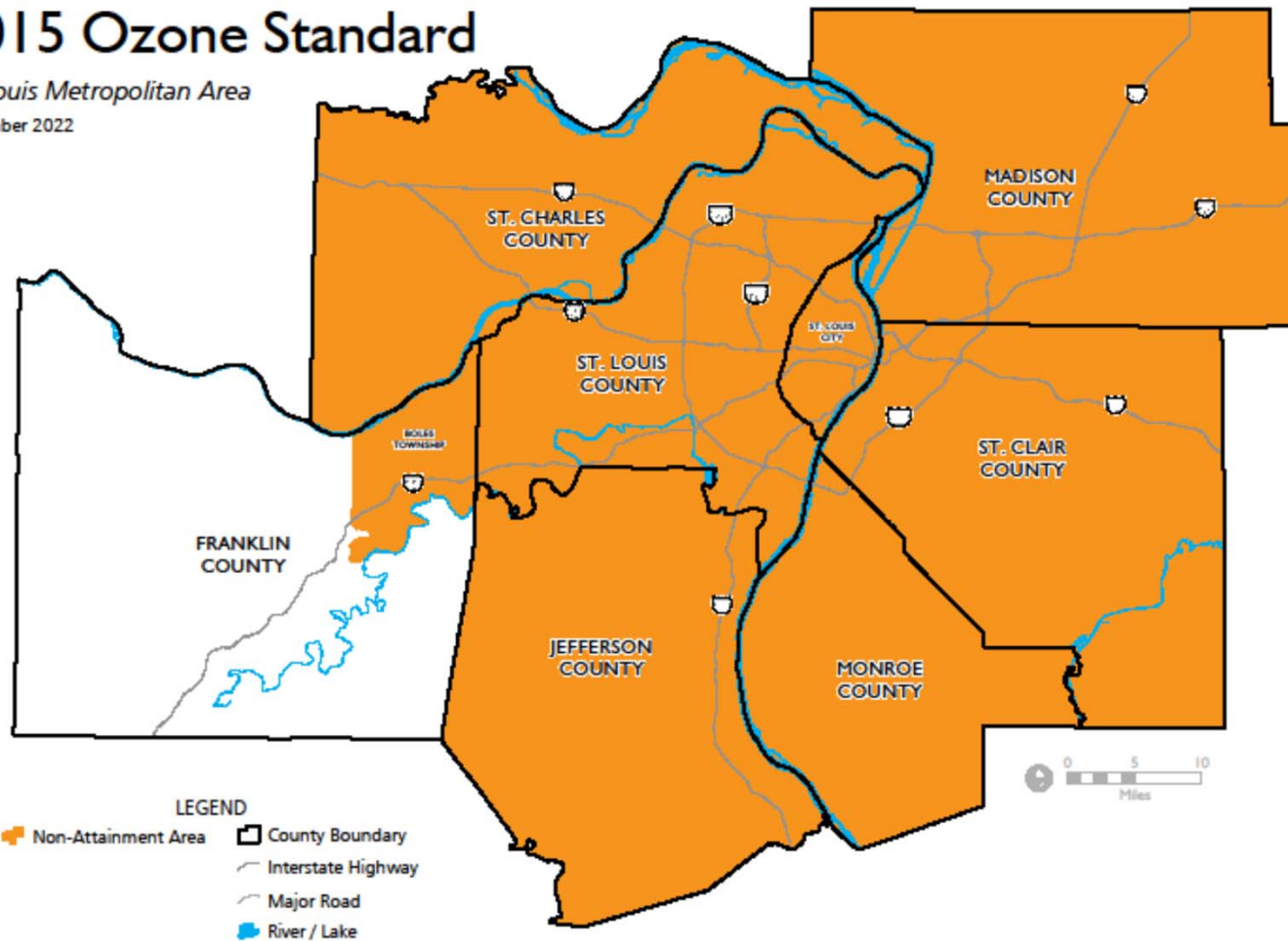

Summary of the 2024 Ozone Season

East-West Gateway Council of Governments
Air Quality Advisory Committee Meeting
October 29, 2024

Non-Attainment Area 2015 Ozone Standard

St. Louis Metropolitan Area
November 2022

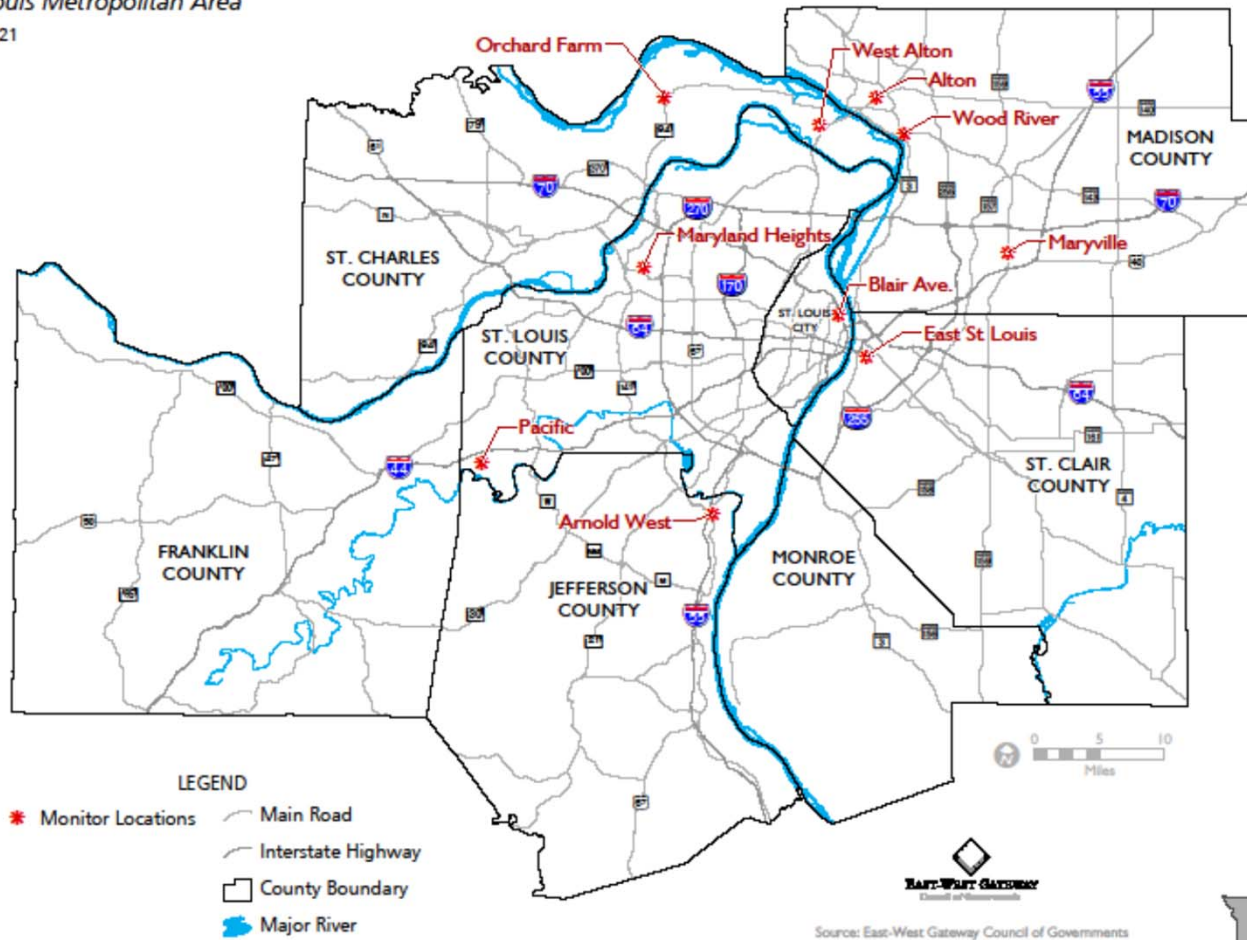


Sources: East-West Gateway Council of Governments

Ozone Monitor Network

St. Louis Metropolitan Area

July 2021



Missouri Monitors

Arnold West
Blair St.
Maryland Heights
Orchard Farm
Pacific
West Alton

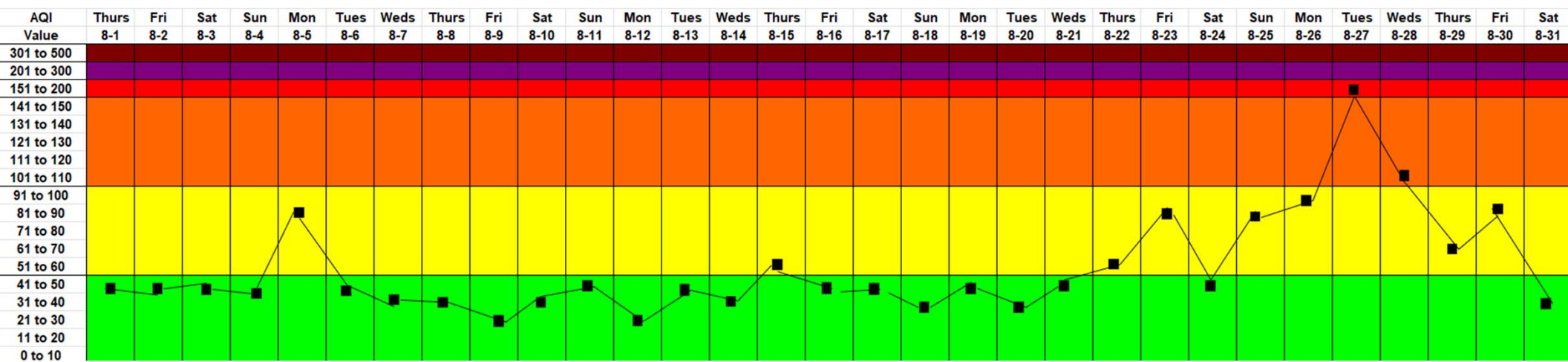
Illinois Monitors

Alton
East St. Louis
Maryville
Wood River



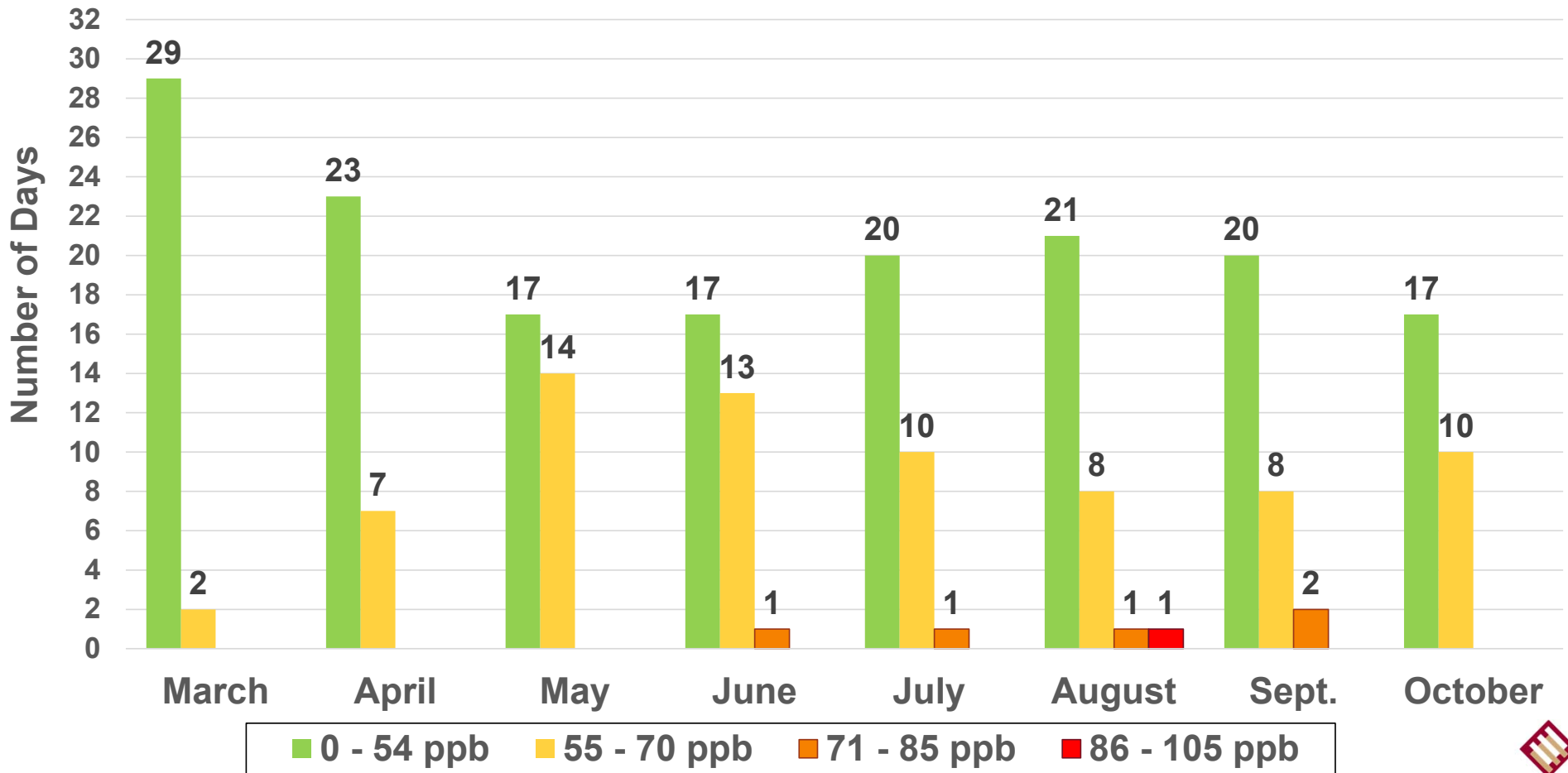
Ozone Concentration (ppb)	Levels of Health Concern	AQI Values
0 - 54	Good	0 – 50
55 - 70	Moderate	51 – 100
71 - 85	Unhealthy for Sensitive Groups	101 – 150
86 - 105	Unhealthy	151 – 200
106 - 200	Very Unhealthy	201 – 300
201 +	Hazardous	301 – 500

August 2024* Air Quality Index Calendar



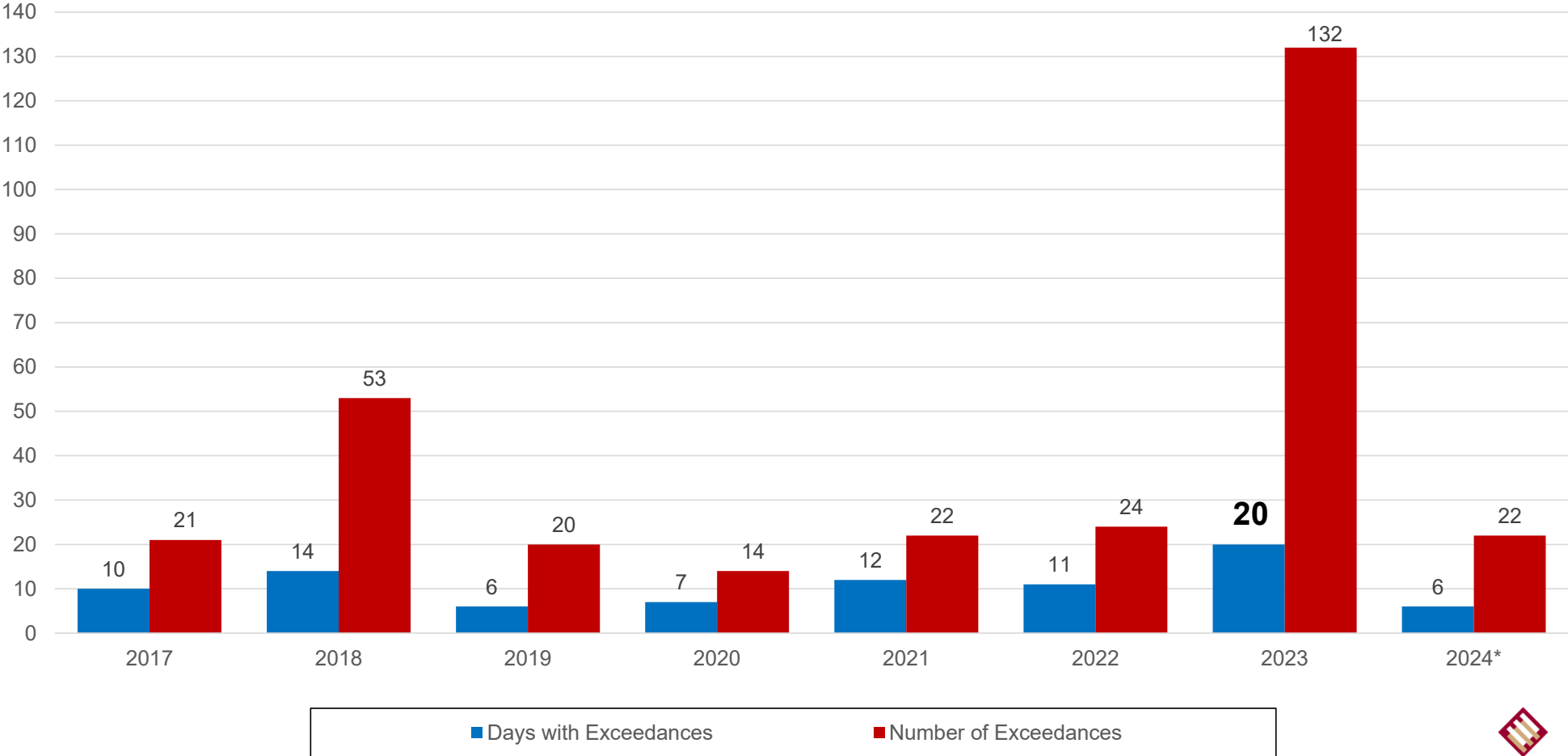
*Data still needs to be quality-assured

Ozone Season Daily Air Quality Index Breakdown March 1st - October 27th, 2024*



*Data still needs to be quality-assured

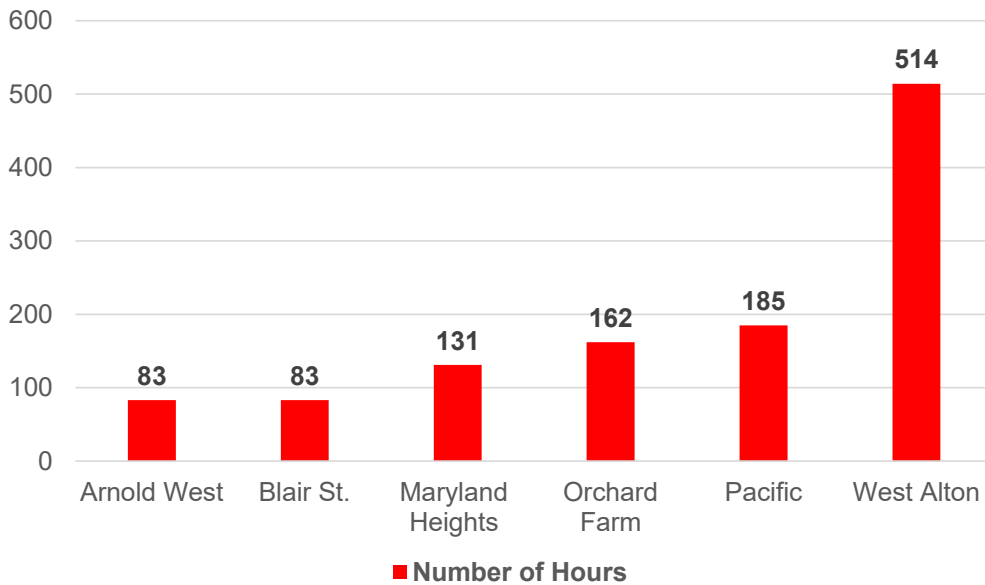
Number of Days with Exceedances from Mar. 1st – Oct 27th 2017 – 2024*



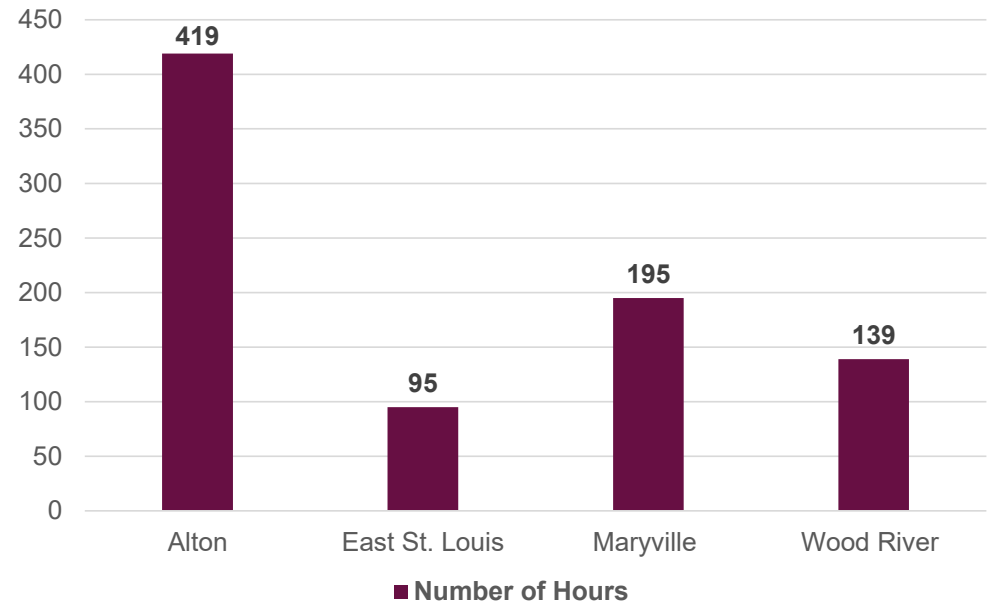
*Data still needs to be quality-assured

Number of Hours Each Monitor Recorded the Highest Ozone Level March 1st – October 19th, 2024*

Missouri Monitors



Illinois Monitors



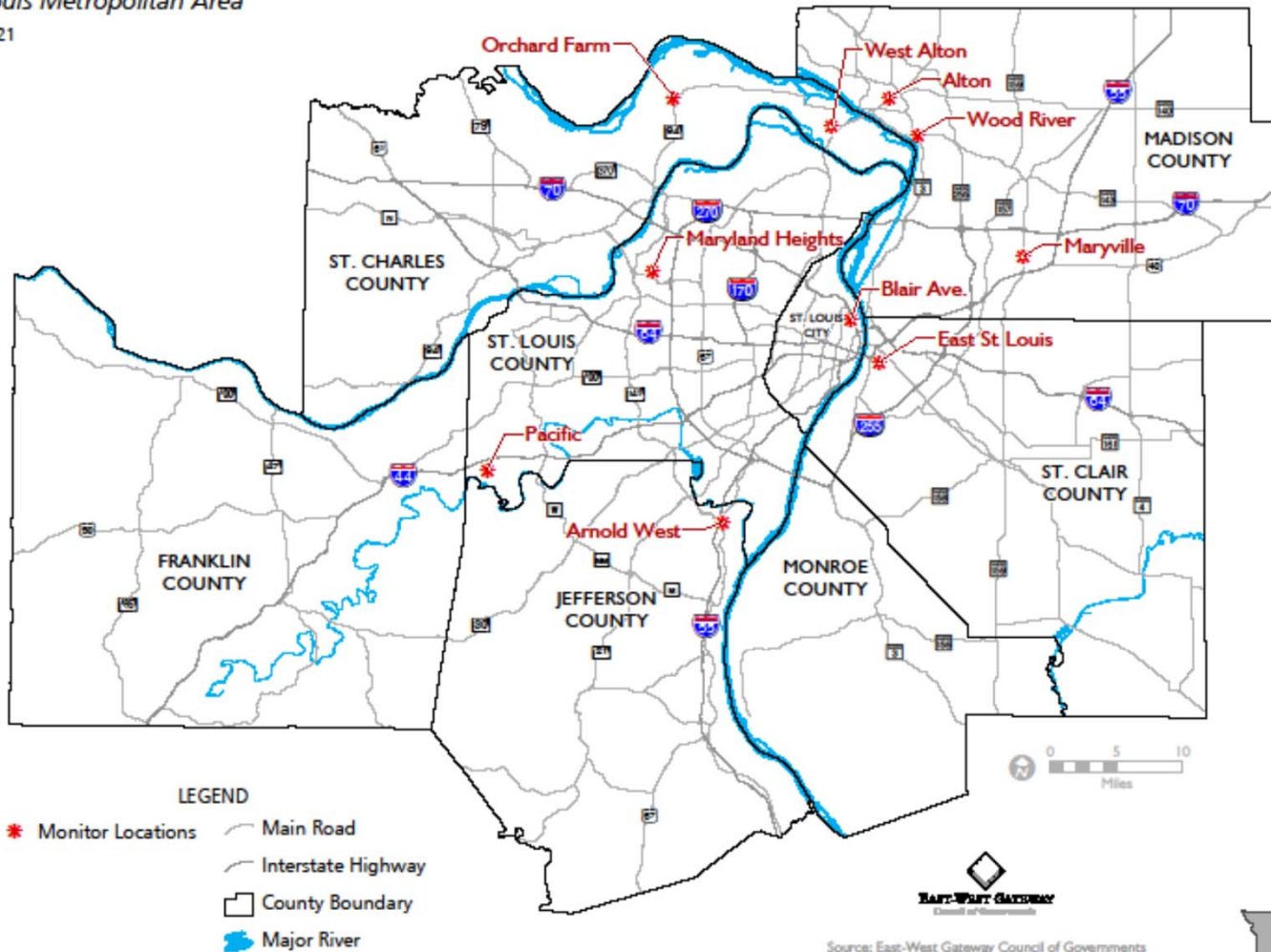
We monitor ozone levels for a 12-hour period (9 am – 9 pm) every day from March 1st – October 31st

*Data still needs to be quality-assured

Ozone Monitor Network

St. Louis Metropolitan Area

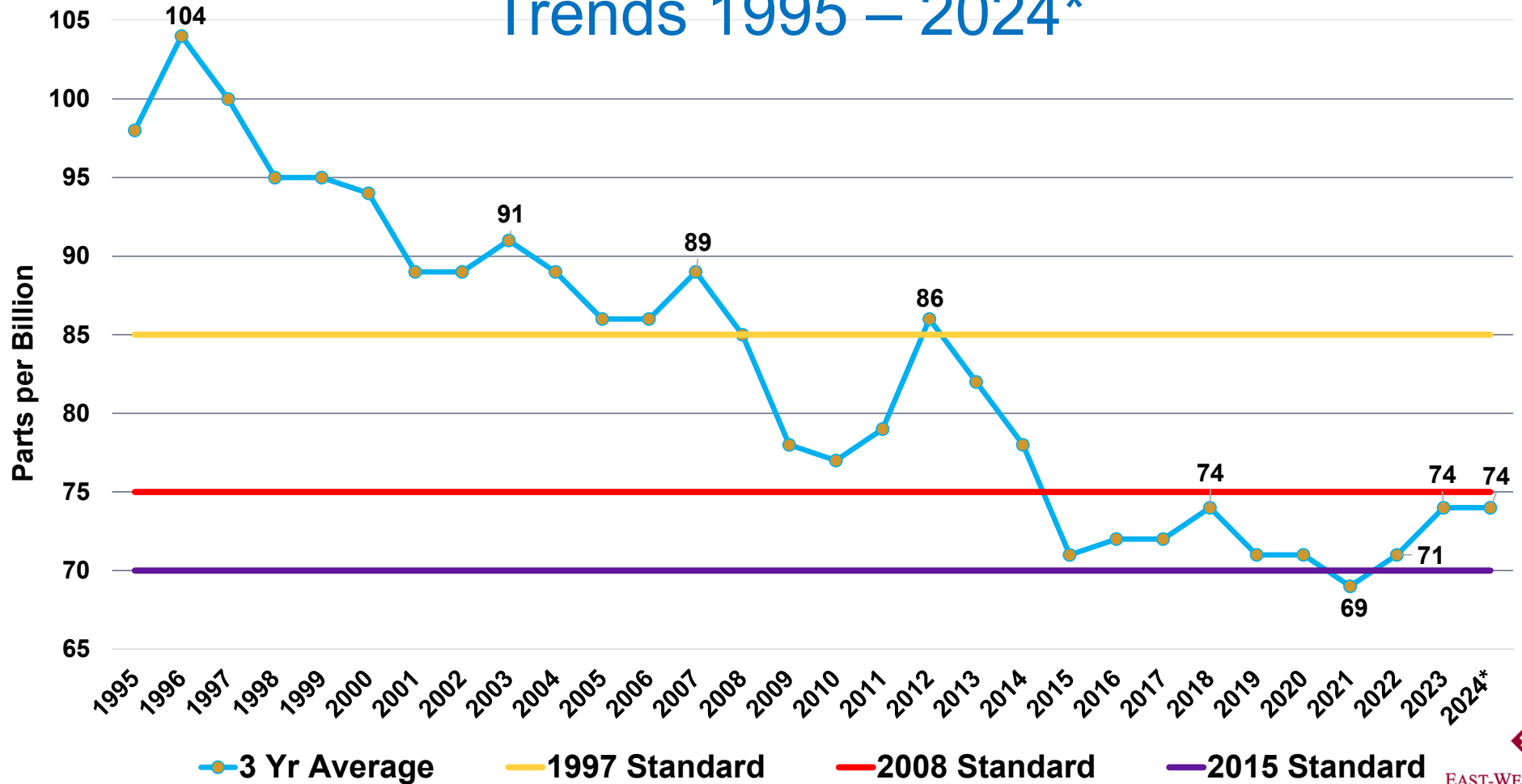
July 2021



Source: East-West Gateway Council of Governments



St. Louis Region General Ozone Trends 1995 – 2024*



*Data still needs to be quality-assured



Questions?

Maureen McCarthy

Maureen.McCarthy@ewgateway.org