

**SAVE  
LIVES  
NOW!**

**Advisory Council Meeting, October 10,  
2024**

# WELCOME

## Advisory Board Co-Chairs

St. Louis Mayor, Tishaura Jones

St. Louis County Executive Dr. Sam Page

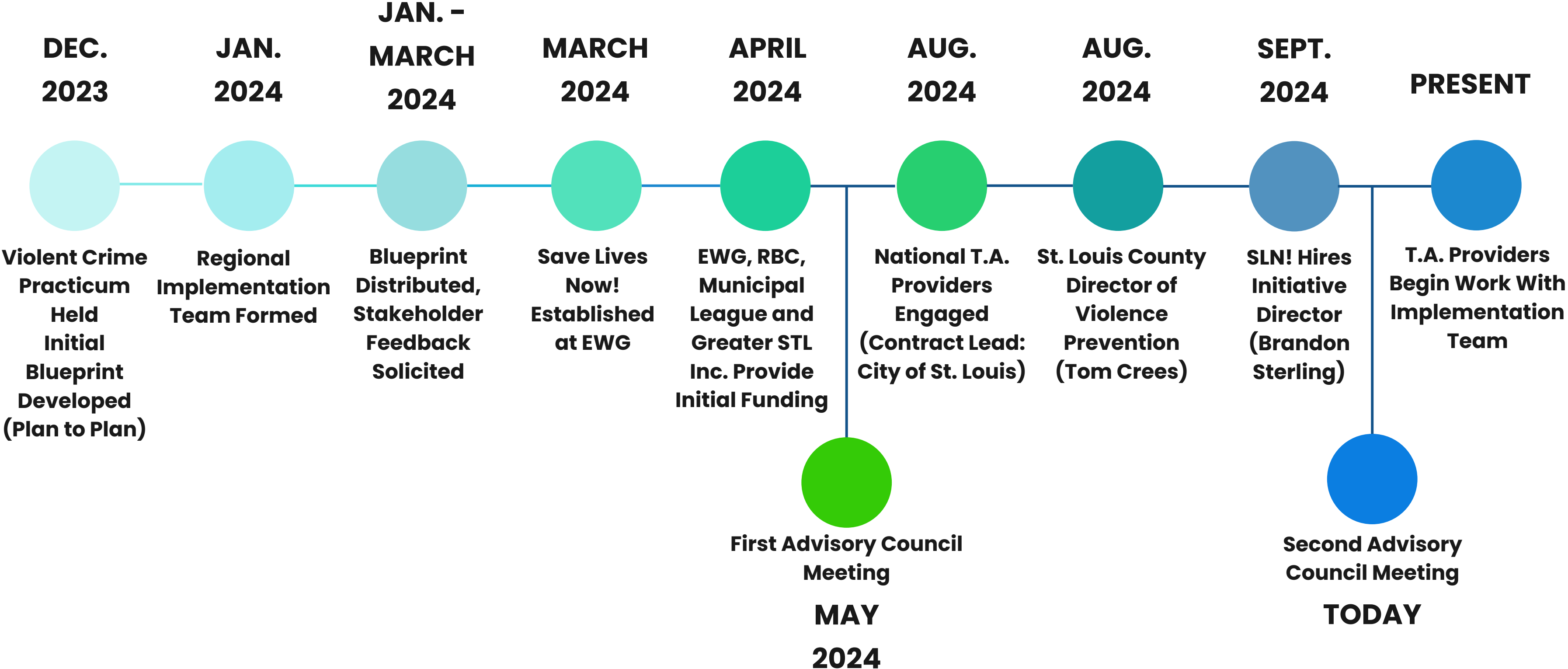
# TODAY'S AGENDA

- Progress Update
- Meet Our New National Technical Assistance Advisors
- Evaluation
- Next Steps
- Closing Remarks

# SAVE LIVES NOW!

- A regional anti-violence initiative to rapidly reduce shootings & homicides by 20% in three years
- Focuses on individuals most at risk for committing street violence
- A balance of law enforcement and support services
- Evidence-based strategies proven to reduce violent street crime

# MILESTONES



# OUR T.A. ADVISORS

**Street  
Outreach**

**Live Free USA**

Oakland, CA

**Focused  
Deterrence**

**National Network for Safe Communities**

John Jay College of Criminal Justice, NYC

**Cognitive Behavioral  
Therapy**

**Roca Impact Institute**

Chelsea, MA

---

Regional Anti-Violence Initiative  
Advisory Board Meeting

**SAVE  
LIVES!  
NOW**

# Street Outreach



---

Regional Anti-Violence Initiative  
Advisory Board Meeting

**SAVE  
LIVES!  
NOW!**

# LIVE FREE

**Live Free USA** is a national organization dedicated to ending gun violence and mass incarceration. Since 2011, Live Free has been helping cities build, launch, and sustain community violence intervention (CVI) initiatives while also helping to advance effective state and federal CVI policy.

**LIVEFREE**  
A campaign of PICO National Network



# Central Principle of CVI

Only a fraction of 1% (often just 0.1 or 0.2%) of a city's population is responsible for a majority of its gun violence.



# Street Intervention/Outreach

Sustained and intensive engagement with those at highest risk

# Key Elements

- Street interventionists have **credibility** in their neighborhoods and typically have similar backgrounds as those at highest risk for shooting or being shot. Program participants are identified through direct street outreach and/or by law enforcement.
- Interventionists **de-escalate tensions, mediate conflicts, and prevent retaliatory violence**. This includes rapid response to sites of conflict as well as proactive interventions when conflict seems imminent.
- In addition to maintaining presence in hot neighborhoods, interventionists maintain a **caseload of 8-10 individuals** with whom they are in constant and proactive communication.



BECOMING MEN OF CHANGE

**Relationships** are the cornerstone of this work. Intervention teams use daily, weekly, and monthly shooting data from law enforcement to inform strategy, but **never share** information with law enforcement.

**Violence interruption is temporary...  
changing lives takes time.**

Interventionists connect individuals on their caseload to **wraparound services**. Rather than simply making referrals, interventionists provide “warm handoffs” to credible services providers and remain engaged with them throughout the process.

# Wraparound Services

- Cognitive behavioral therapy
- Trauma & grief counseling
- Drug treatment
- Job training/placement
- Internships
- Housing

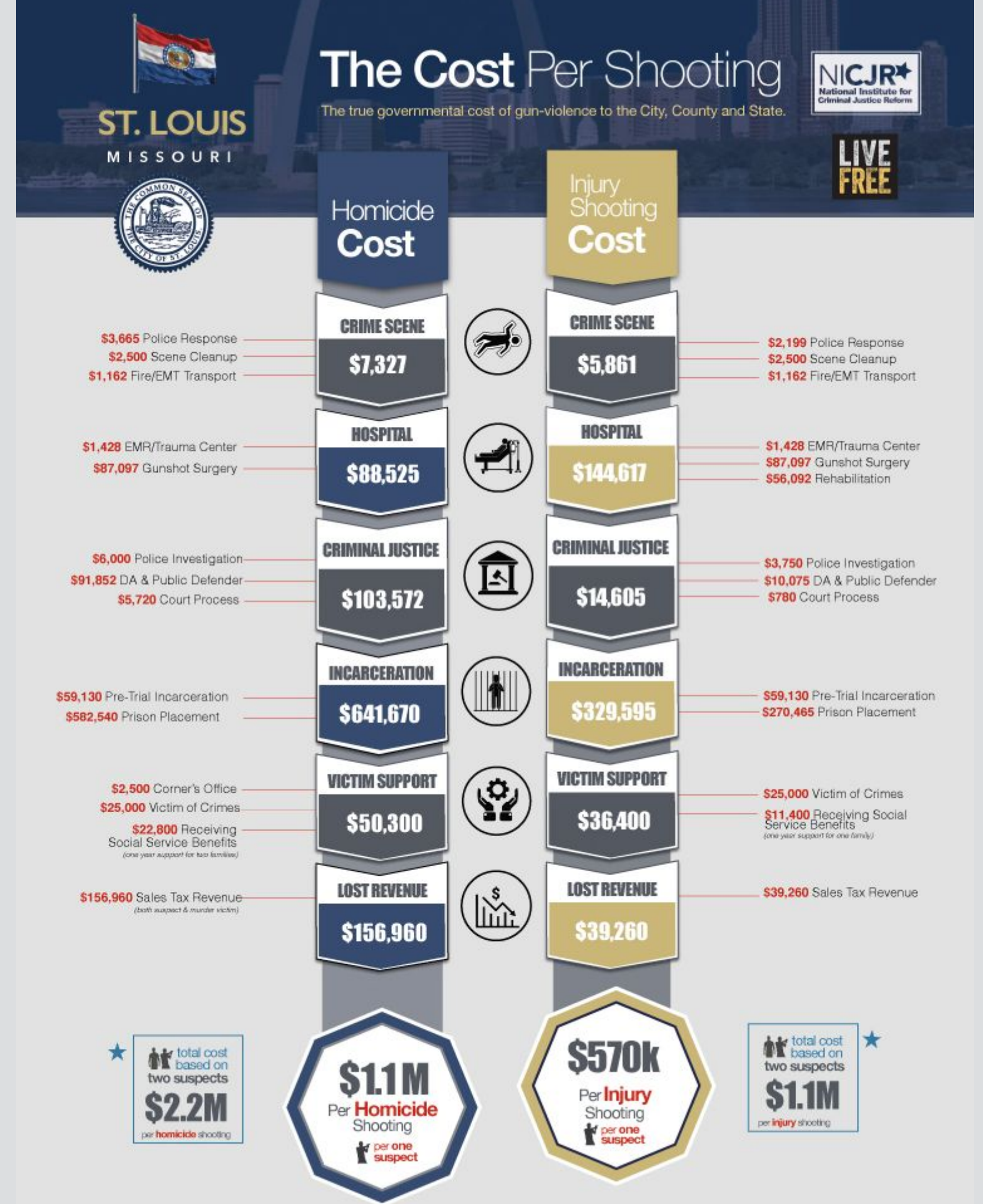


# Outcomes

For the past 15 years, street intervention efforts have been evaluated in numerous cities both nationally and internationally, often demonstrating 60%+ reductions in target neighborhoods and/or 30%+ reductions in citywide fatal and nonfatal shootings.

# Pays for itself many times over...

Live Free commissioned a study of the taxpayer cost of a single shooting in St. Louis. Combined city, county, and state expenses range from **\$570,000** for a nonfatal shooting to **\$2,200,000** for a fatal shooting with two suspects.





# Focused Deterrence



Regional Anti-Violence Initiative  
Advisory Board Meeting

**SAVE  
LIVES!  
NOW**



National Network  
For Safe Communities  
at JOHN JAY COLLEGE

# Group Violence Intervention

Overview

# Overview of the Group Violence Intervention

- Operational approach to **reduce violence** and **build trust** between communities and criminal justice agencies
- **Enhance legitimacy** by explicitly breaking with past practice of over-enforcement and under-protection
- Based on central fact that communities are not dangerous: violence is driven by a small number of people
- Recognizes power of **informal social control**
- Recognizes **the trauma and victimization** of people involved in violence and works to keep them safe, keep them out of prison, and support them in their lives
- “Safe, alive and free”

## Black Men in America Are

**6%**

Of the US population

**50%**

Of homicide victims



## Core GVI Elements

Partnership directly communicates core messages to group members:

- Credible **community moral message** against violence
- Genuine **offer of help** and support for those who want it
- Credible law enforcement message about **legal consequences** for further violence

# Key GVI partners

- Community members
- Social Services
- Law Enforcement



# Community

Community members most impacted by violence play a vital role in GVI. They speak directly to people most likely to shoot or be shot and tell them:

- We care about you
- We need you
- That the community will not tolerate shootings



## Social Services

Social services play a vital role in GVI. They provide services to GVI clients such as:

- intensive mentoring and case management
- therapy
- housing
- relocation
- work/education/training
- etc. ( The “Big Small” stuff)





## Support and Outreach Framework: Pillars

- Keeping people alive and out of prison
- Providing affirmative outreach
- Offering protection from risk
- Addressing trauma
- Providing “the big small stuff”
- Linking to traditional services

Saved to J: Drive



# Cognitive Behavioral Theory



---

Regional Anti-Violence Initiative  
Advisory Board Meeting

**SAVE  
LIVES!  
NOW!**

# Save Lives Now

October 10, 2024

**CBT Skills  
for Living**

**REWIRE CBT by Roca**



## ➤ Roca's Mission

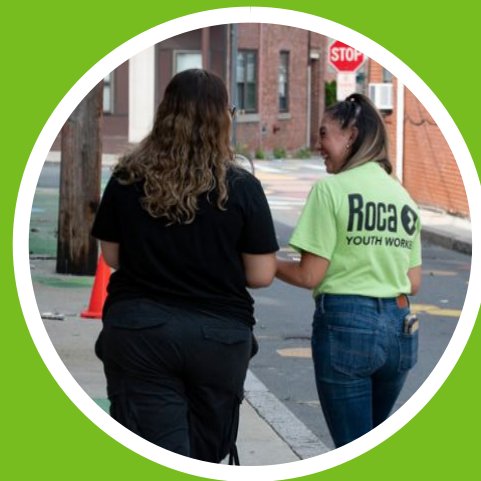
To **relentlessly disrupt violence** by engaging young people, police, and systems to **heal from trauma, find hope, and drive change.**





# TWO LEVERS FOR CHANGE

Reducing urban violence and addressing trauma are fundamental to achieving racial and economic justice.



## DIRECT SERVICE MODEL BRINGING REWIRE CBT SKILLS TO THE STREETS

OUR YOUTH WORKERS give young people the tools to think, feel, and do differently, and free themselves from survival mode living.



## ROCA IMPACT INSTITUTE BRINGING REWIRE CBT SKILLS TO PARTNERS

The IMPACT INSTITUTE gives individuals and agencies on the front lines of violence the tools to approach young people differently.





# WHAT IS CBT?

- Cognitive Behavioral Therapy (CBT) is an evidence-based tool that helps individuals at the highest risk change their behavior over time.
- It is considered the gold standard intervention for programs aiming to reduce violence, help people cope with trauma, and prevent crime.

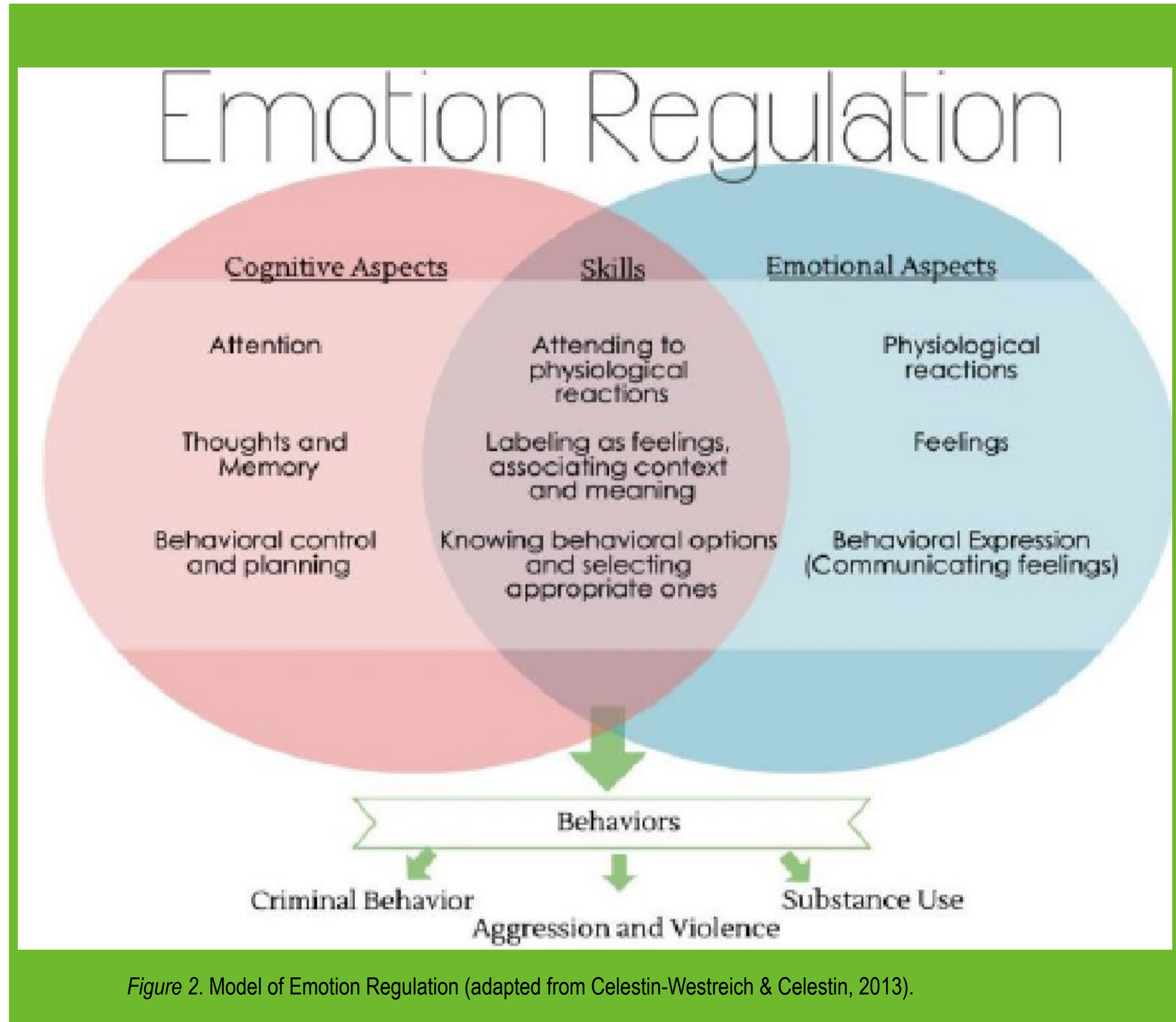


Figure 2. Model of Emotion Regulation (adapted from Celestin-Westreich & Celestin, 2013).



# The Roca **IMPACT INSTITUTE**

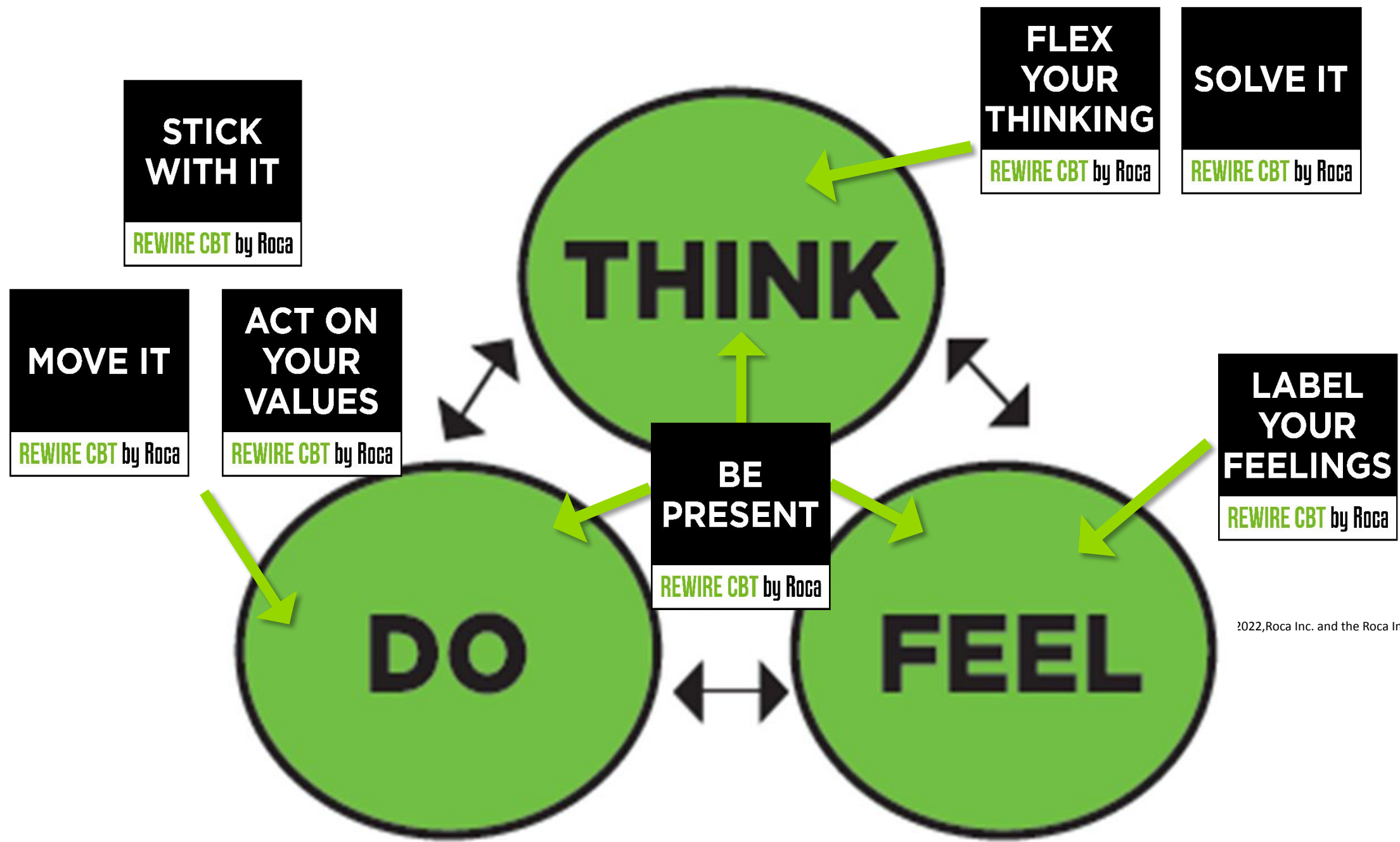
IN MEMORY OF JAMES E. MAHONEY



Roca worked with **Massachusetts General Hospital** to develop Rewire CBT – a simple and relatable CBT skill-based practice that Roca uses with young people.



# REWIRE CBT BY ROCA



©2022, Roca Inc. and the Roca Impact Institute

## CBT Skills for Living

**REWIRE CBT by Roca**



# ➤ WHAT MAKES REWIRE CBT DIFFERENT?

- Designed to be delivered on the frontline by those who work with the highest-risk individuals.
- 7 core life skills specifically relevant to individuals actively engaged in violence.
- Fully mobile approach, offered in frequent “doses” to be delivered anywhere: street, stoop, car, facilities.
- Meets the need for training and tools to address **trauma** for **both** front line worker and participant.

© 2022, Roca Inc. and the Roca Impact Institute

## Trauma = fear that won't turn off

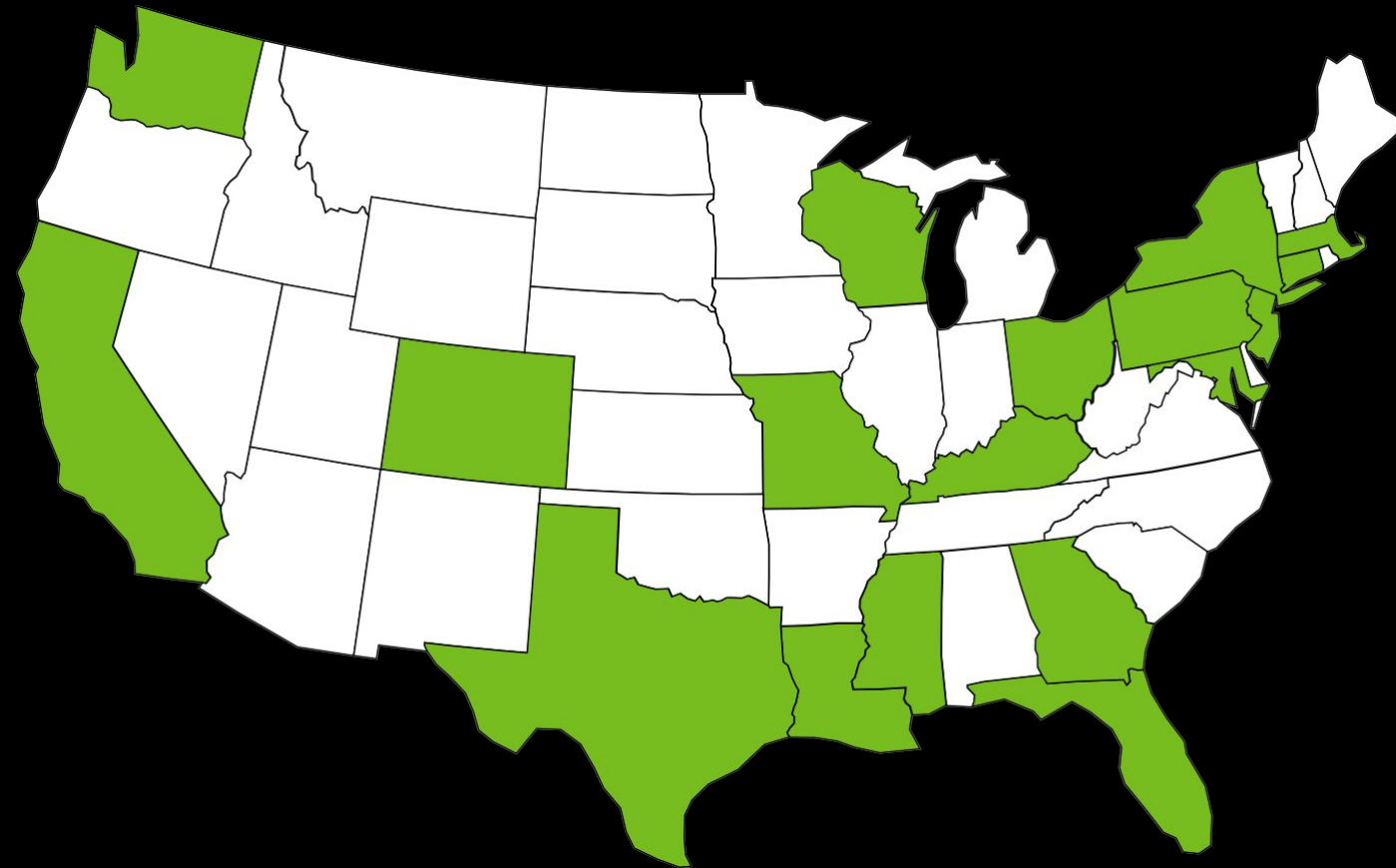
"Imagine if the natural fear response never turns off. Persistent fear that never turns off is the neurobiological definition of trauma. Consider the psychological burden of living in fear every day—feeling like you are in a state of “fight, flight and/or freeze” and/or “seeking safety” every waking moment of the day.”



Dr. Alisha Moreland-Capuia



# WHERE WE TRAIN AND COACH



## WASHINGTON

- King County

## CALIFORNIA

- San Francisco
- Oakland

## COLORADO

- Denver

## WISCONSIN

- Milwaukee

## OHIO

- 7+ Cities and Counties

## KENTUCKY

- Louisville

## LOUISIANA

- Baton Rouge

## TEXAS

- Harris County

## DISTRICT OF COLUMBIA

## MARYLAND

- Statewide (DJS)
- Baltimore
- Baltimore County
- Prince George's Co.

## GEORGIA

- Atlanta

## FLORIDA

- West Palm Beach

## MISSOURI

- St. Louis

## MISSISSIPPI

- Jackson

## MASSACHUSETTS

- 10+ Cities and Counties

## CONNECTICUT

- Bridgeport
- Hartford
- New Haven

## NEW YORK

- New York City
- Buffalo
- Rochester

## NEW JERSEY

- Patterson

## PENNSYLVANIA

- Philadelphia

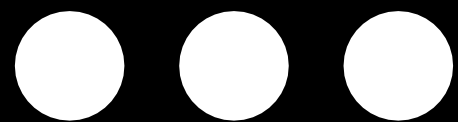
FY 2024



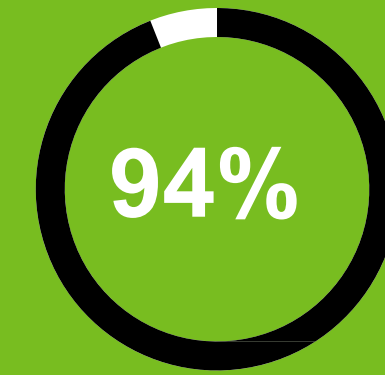
# ROCA IMPACT INSTITUTE



IN FY 2024, WE TRAINED AND COACHED **2,900+** COMMUNITY VIOLENCE INTERVENTION STAFF, PROBATION AND CORRECTIONS STAFF, HOSPITAL RESPONDERS AND POLICE OFFICERS IN **REWIRE CBT**.



WOULD RECOMMEND  
REWIRE CBT  
TO A COLLEAGUE



SAY THAT REWIRE  
CBT MADE THEM  
MORE EFFECTIVE IN  
THEIR WORK



OF LAW  
ENFORCEMENT  
SAY THAT REWIRE 4  
HELPED THEM MANAGE  
THEIR RESPONSES  
IN STRESSFUL  
SITUATIONS



[Rewire CBT] offers tangible solutions in an easily digestible format. It is a basis for identifying and working through everyday feelings and stressors in a more adaptive way.”

- Intervention Specialist, SNUG (NYS)



Rewire CBT has most definitely affected the way I navigate with not only my work but also with my everyday life and how I deal with at risk Youth and myself.”

- Violence Intervention Specialist, DC Peace Academy

# DISCUSSION



# Third Party Evaluation



---

Regional Anti-Violence Initiative  
Advisory Board Meeting



UNIVERSITY OF  
MISSOURI-ST. LOUIS

**UMSL** | Criminology and  
Criminal Justice  
University of Missouri–St. Louis

# Save Lives Now!

## Evaluation Plan Overview

**Christopher J. Sullivan, E Desmond Lee Professor of Youth Crime and Violence**  
**Lee Ann Slocum, Professor**

**Presentation for Save Lives Now! Advisory Council**  
**October 10, 2024**

# PURPOSE & GOALS

Purpose: Support the regional Save Lives Now! Initiative's violence reduction efforts by documenting, analyzing, and providing dynamic and summative feedback on its implementation, outcomes, and impact

1. Develop comprehensive understanding of the implementation context
2. Assess intervention delivery via appropriate metrics
3. Identify factors that support effective implementation of SLN!
4. Provide ongoing assessment of SLN!'s violence impact
5. Estimate return on investment (ROI) given impact relative to investments
6. Make sustainability recommendations based on #1 to 5



### **CRIME DATA ANALYSIS**

Compare official violent crime records over time and relative to SLN! implementation

### **SERVICES AND OUTREACH DATA ANALYSIS**

Understand what services and outreach is happening across the initiative

# **EVALUATION PLAN (DRAFT)**

### **INTERVIEWS WITH COMMUNITY MEMBERS**

Understand residents' perceptions of violence in their community and reactions to different aspects of SLN!

### **INTERVIEWS, SURVEYS,**

Understand implementation from the perspective of organizational leaders and front-line staff. Identify how organizations work collaboratively in SLN!

# WHAT WE CAN OFFER

- Rapid, ongoing data support, analysis and reporting for individuals, organizations, SLN!, and communities as a whole
- Insight on observing SLN! from early steps—Leads to informed, but independent, assessment
- Tailored summaries of key findings and facts for partners and key stakeholders
- Opportunities for key staff and stakeholders to talk about their work
- Ongoing learning in strategic planning, evaluation, & implementation practices
- Can begin immediately using resources from E. Desmond Lee Collaborative Vision and parallel data collection efforts

# WHY PARTNER WITH RESEARCHERS?

## Researchers can...

- Help you document and understand the nature and scope of an issue
- Support creation of action plans
- Assess fidelity of program implementation
- Evaluate program effectiveness



## Which can result in...

- More efficient processes
- Better outcomes
- Innovative solutions
- Increased competitiveness for funding

**Partnerships equip organizations with knowledge and tools to better accomplish their goals**

# WHAT WE PROMISE

- **Respect participants' time and compensate for it where appropriate/possible**
- **Honest, but constructive in reporting findings**
- **Report in aggregate, so no "singling out"**
- **Practice what we preach**
  - **Listen to, learn, and adjust based on constructive feedback**
- **Recognize that you control your "data"**
  - **Multiple opportunities to review and provide feedback**

# SHORT-TERM GOALS

## **Finalize Collective Program Design**

TA Providers and the Implementation Team meet to define and consolidate program objectives, strategies, and key components for implementation.

## **Determine the Initial Scope of Work**

Decide on the initial focus with partners.

# SHORT-TERM GOALS

## Training Programs, SLN Academy

Develop and test training modules in Street Outreach and Cognitive Behavioral Theory.

## Fundraising

Develop a proposal that illustrates funding needs by outlining program benefits, objectives, and partnership opportunities for cities and counties.

# SHORT-TERM GOALS

## **Engage Potential Partners**

Identify existing or new Community-Based Organizations (CBOs) and street outreach candidates.

## **Custom Notifications**

Lay groundwork for direct communication to high-risk individuals about legal consequences and support service options.

# OUR PARTNERS



SAINT LOUIS COUNTY  
Missouri



ST. CHARLES  
COUNTY

**JEFFERSON**  
COUNTY, MISSOURI



EAST-WEST GATEWAY  
Council of Governments

**UMSL**  
University of Missouri–St. Louis



Violence  
Reduction  
Center

Regional Anti-Violence Initiative  
Advisory Board Meeting

**SAVE  
LIVES!  
NOW!**



# THANK YOU



STLOUISARTWORKS / CREATING. OPPORTUNITIES.

# STAY CONNECTED

[www.ewgateway.org/save-lives-n](http://www.ewgateway.org/save-lives-now)

[savelivesnow@ewgateway.org](mailto:savelivesnow@ewgateway.org)

[brandon.sterling@ewgateway.org](mailto:brandon.sterling@ewgateway.org)

**Take the exit survey!**



# EXIT SURVEY

LET US KNOW  
HOW IT WENT  
TODAY



---

Regional Anti-Violence Initiative  
Advisory Board Meeting

**SAVE  
LIVES!  
NOW**