



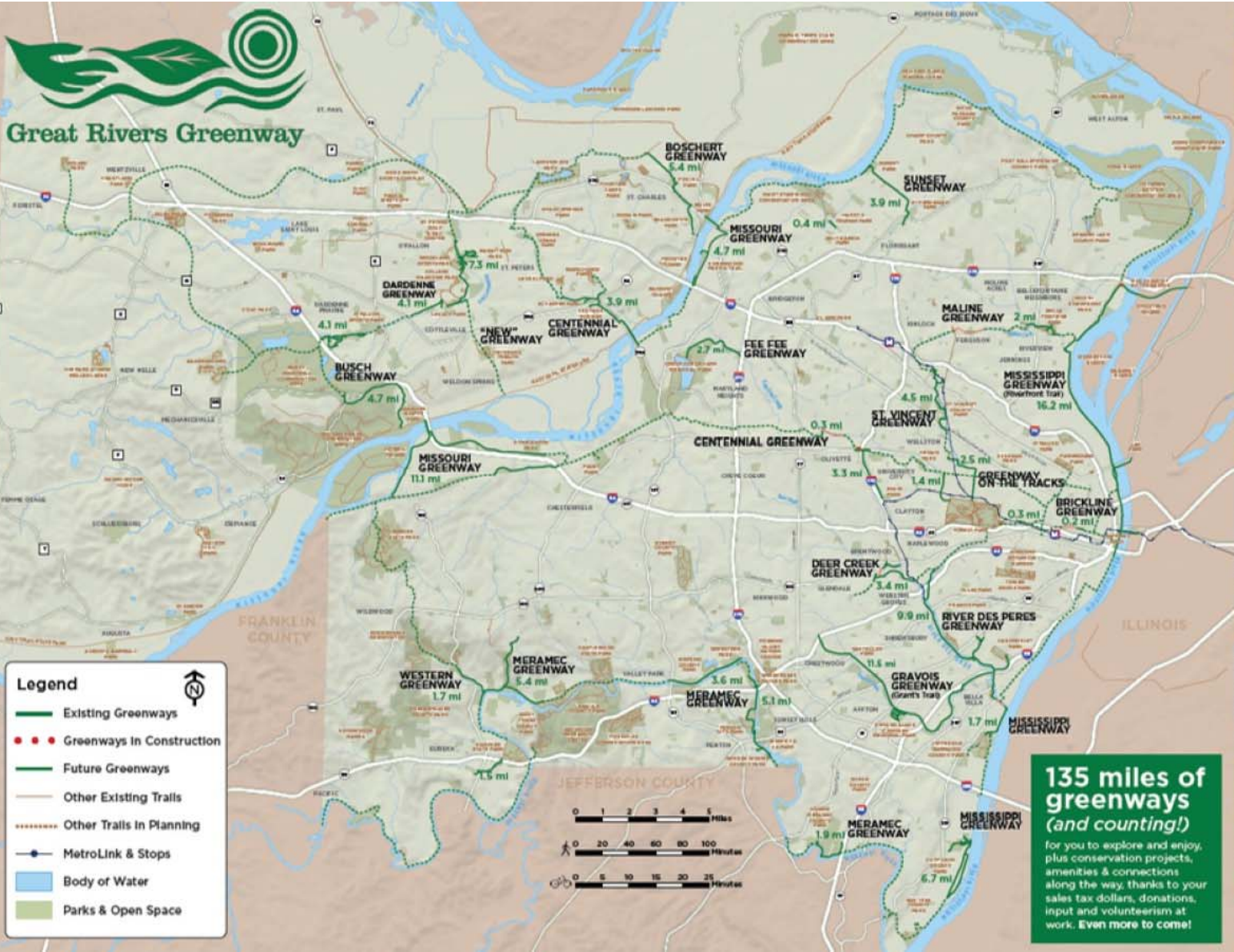
Great Rivers Greenway
LIVE LIFE OUTSIDE

OUR MISSION:

Make the St. Louis region a more vibrant place to live, work and play by developing a regional network of greenways.



Great Rivers Greenway



Legend

- Existing Greenways
- Greenways In Construction
- Future Greenways
- Other Existing Trails
- Other Trails In Planning
- MetroLink & Stops
- Body of Water
- Parks & Open Space



135 miles of greenways (and counting!)

for you to explore and enjoy, plus conservation projects, amenities & connections along the way, thanks to your sales tax dollars, donations, input and volunteerism at work. **Even more to come!**



CIVIC ENGAGEMENT



ST CHARLES COUNTY



Great Rivers Greenway

ST. CHARLES COUNTY GREENWAY PLAN

- Great Rivers Greenway
- St. Charles County
- City of Cottleville
- City of Dardenne Prairie
- City of Lake Saint Louis
- City of O'Fallon
- City of St. Charles
- City of St. Peters
- City of Weldon Spring
- City of Wentzville



2020 ST. CHARLES COUNTY GREENWAY MASTER PLAN

A Blueprint for Greenway Development



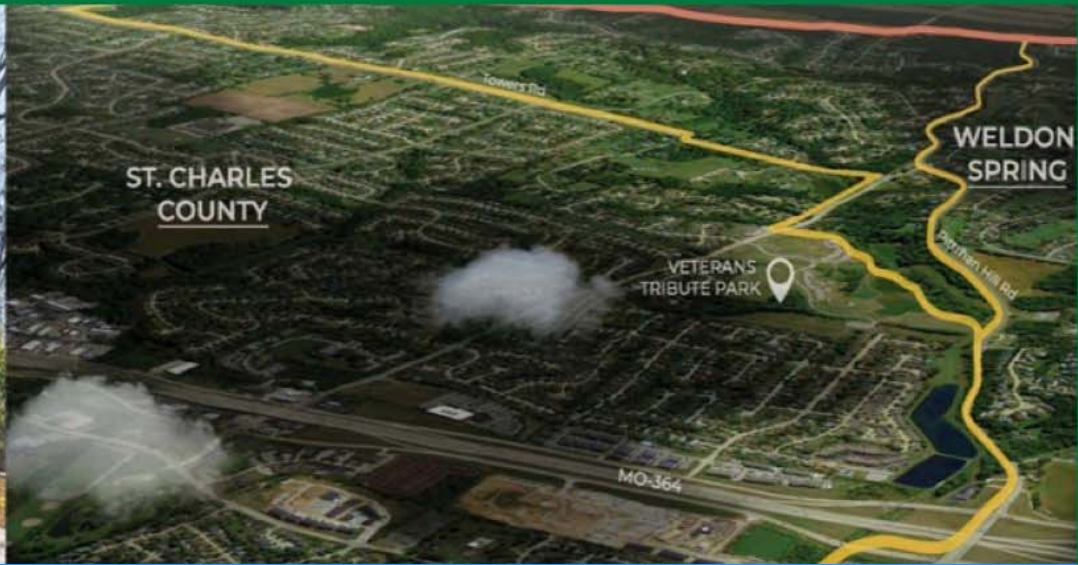
ST. CHARLES COUNTY GREENWAY MASTER PLAN

RECOMMENDED GREENWAYS

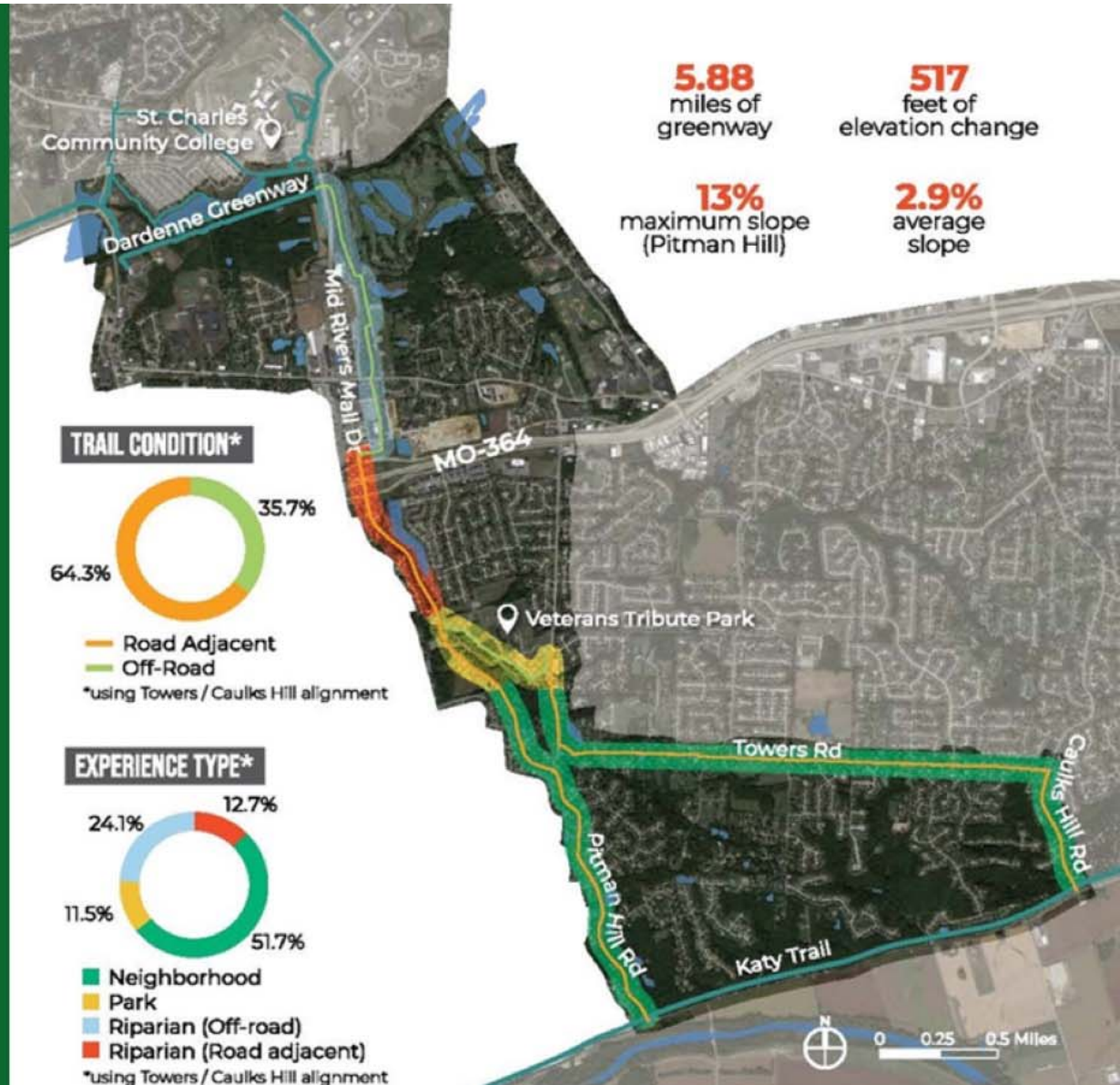




BALTIC CREEK GREENWAY



BALTIC CREEK GREENWAY

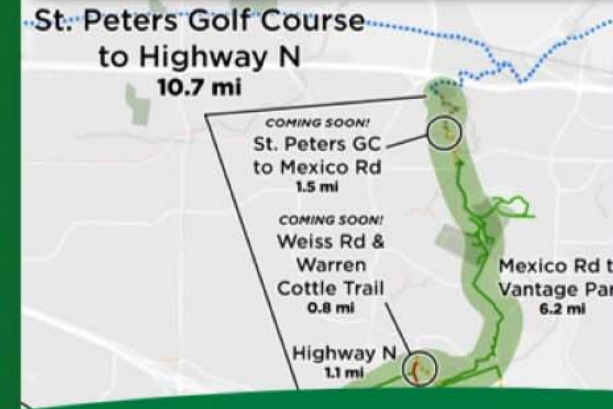




DARDENNE GREENWAY



DARDENNE GREENWAY: MEXICO ROAD TO I-70 IN ST. PETERS



ST LOUIS COUNTY



Great Rivers Greenway

A close-up photograph of dark tree branches covered in vibrant pink cherry blossoms. A small bee is visible on one of the branches. The background is a soft-focus green, suggesting a park setting. The image is framed by a dark green border.

MALINE

GREENWAY

**W. Florissant Ave. to Bella Fontaine
Park West**

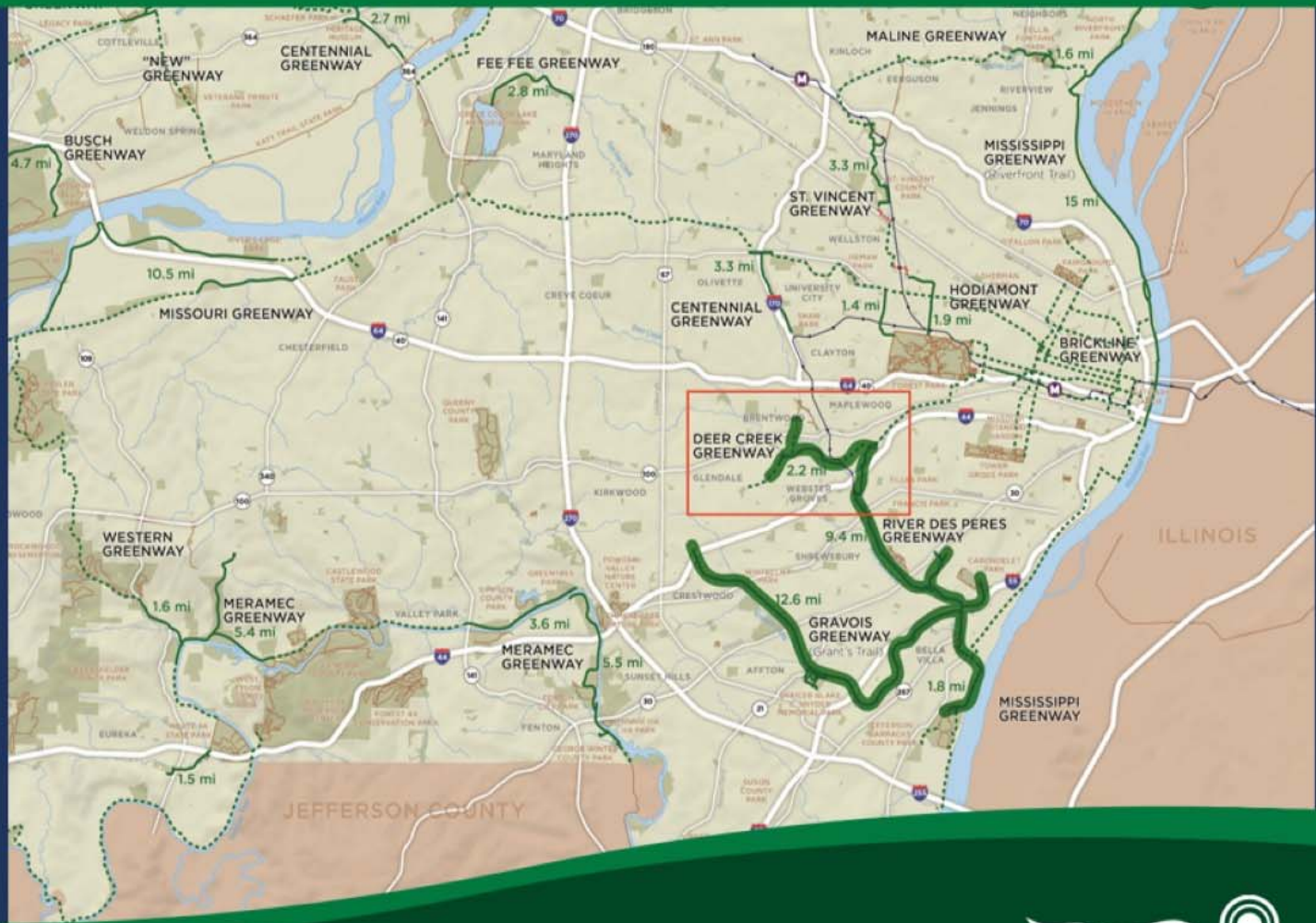




A photograph of three women and a dog running on a paved path. The woman on the left is wearing a purple long-sleeved shirt and black pants. The woman in the middle is wearing a black hoodie and maroon pants. The woman on the right is wearing a black hoodie and grey leggings, and is holding a blue leash. A black and white dog wearing an orange and green vest is running in front of her. The background shows green trees and a grassy area. The text 'DEER CREEK GREENWAY' is overlaid in white, with a blue horizontal line underlining 'DEER CREEK'.

DEER CREEK GREENWAY

DEER CREEK GREENWAY



**DEER CREEK GREENWAY
CONNECTIONS TO
RIVER DES PERES GREENWAY**





COMING SOON: OXFORD BEND PARK



**ST. VINCENT
GREENWAY**
Cities of Wellston +
Pagedale







Great Rivers Greenway



Legend

- Completed Greenway
- Future Greenway

Robert L Powell Place to Forest Park

Robert L Powell Place to St. Charles Rock Road 2024-2025 Construction

Length: 1.69 miles
Construction Schedule: 2024 - 2026
Construction Cost: \$4.6 million

Partners

- City of Pagedale
- MoDOT
- St. Louis County
- Beyond Housing
- Community Impact Network

Phase 1

- St. Louis County
- 2024 Construction

Phase 2

- MoDOT
- 2025 - 2026 Construction

Phase 3

- Great Rivers Greenway
- 2025 Construction



ST LOUIS CITY



Great Rivers Greenway

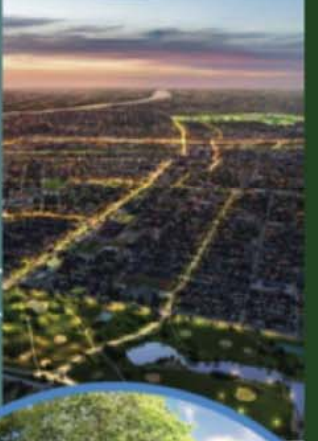


BRICKLINE GREENWAY

A VISION THIS BOLD TAKES ALL OF US



BRICKLINE GREENWAY



Project of
Great Rivers Greenway

EQUITY AND ECONOMIC IMPACT



Economic and social impacts of developing the Brickline Greenway

Prepared for Greater St. Louis, Inc.
October 2022



Location: Market Street concept looking east.

EY
Building a better
working world

BRICKLINE GREENWAY PROJECTED ECONOMIC IMPACT: (from recent Ernst & Young study with Greater St. Louis, Inc)

\$462M Trail construction (230 ANNUAL JOBS)

UP TO \$126M Total residential property value increase

\$53M Total tax impact of construction, operations, maintenance

UP TO 10M New walking / biking trips

UP TO 12M Decline in vehicle miles traveled



**EQUIVALENT TO
1,003-1,146** Fewer cars per year, reducing emissions

\$5M In economic output from operations, maintenance

UP TO \$4M Aggregated avoided health costs to residents



UP TO \$82M Associated local business activity (906 JOBS!)

ECONOMIC DEVELOPMENT STRATEGIES

- Affordable housing partnerships
- Community Service Partnerships
- Multi- neighborhood CDC for Commercial Development
- Redevelopment Partnerships
- Workforce/apprenticeships



CENTRAL CONNECTOR

Mill Creek Valley Segment
Harris Stowe State University
to CityPark Stadium







MILL CREEK VALLEY





NORTH CONNECTOR

NORTH GRAND AVE
AND SPRING AVE







CENTRAL CONNECTOR

Cortex to Grand Metro
Stations



METROLINK CORRIDOR

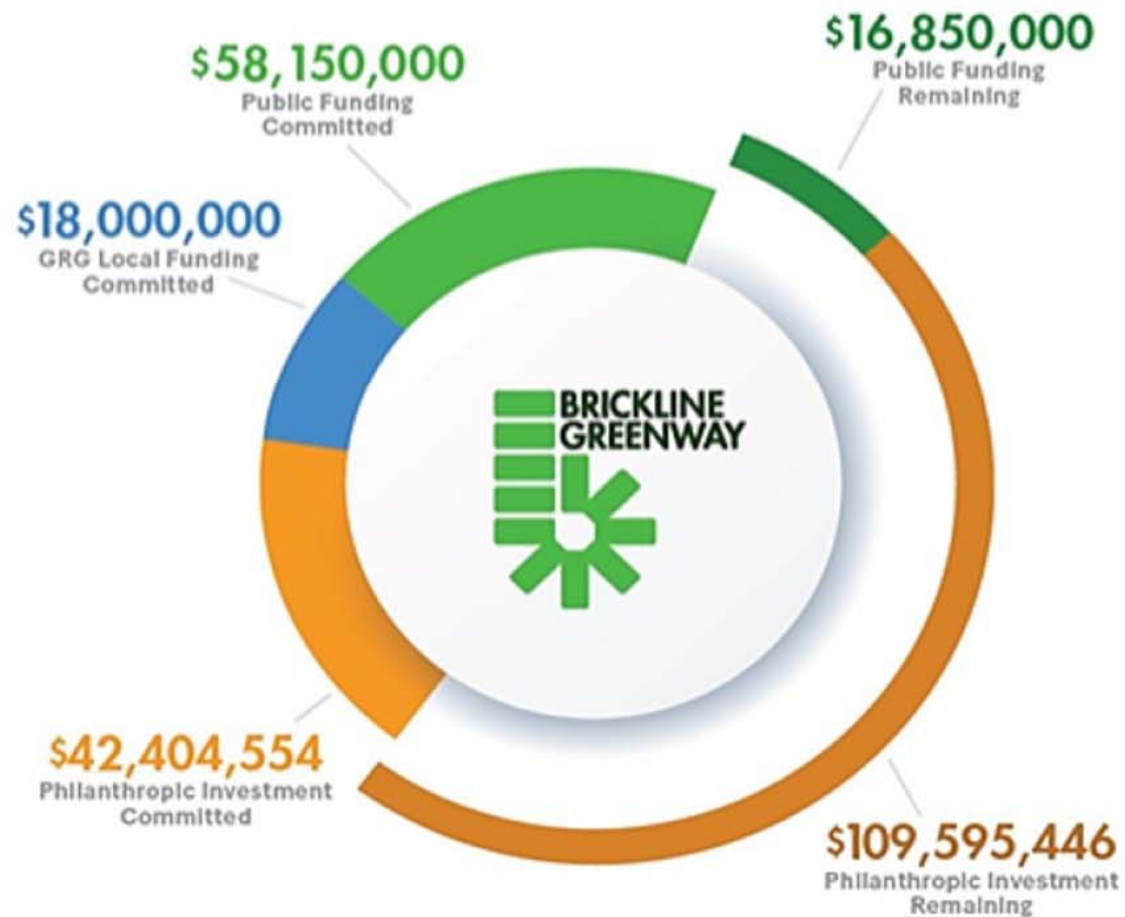


METROLINK CORRIDOR

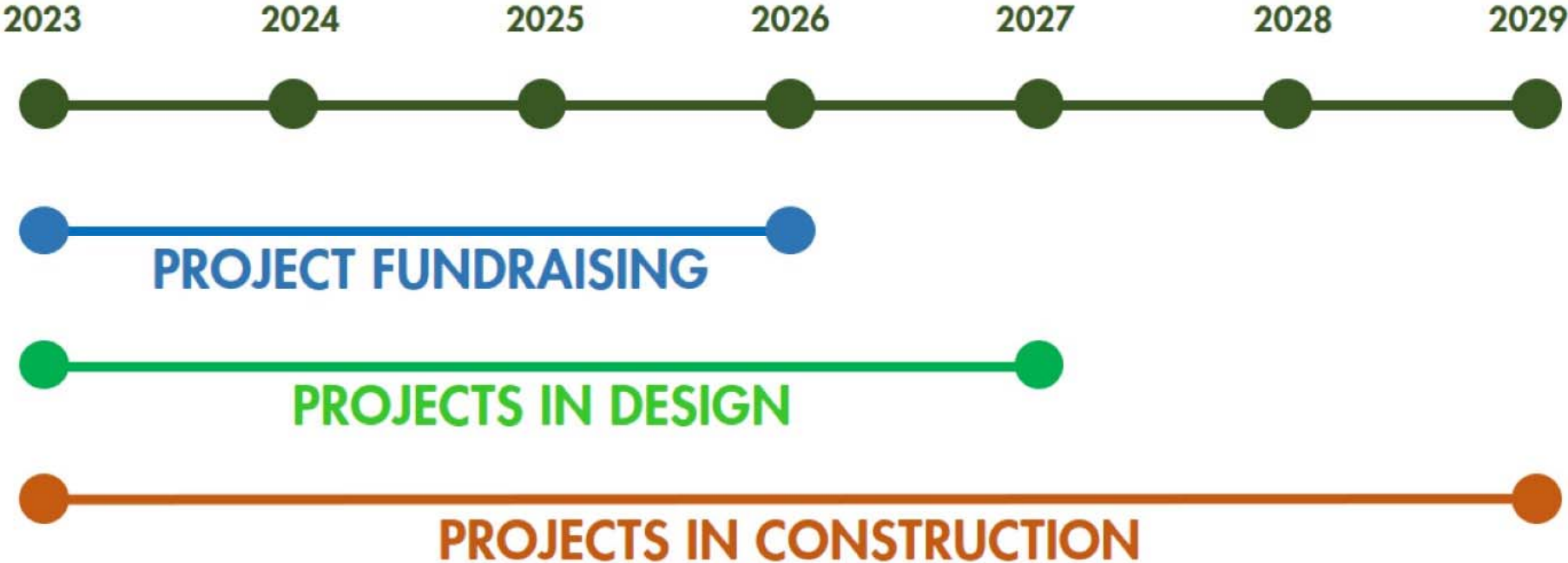


BRICKLINE GREENWAY FUNDING \$245M TOTAL

**48%
TO
GOAL**



BRICKLINE GREENWAY TIMELINE



A VISION THIS BOLD...

takes all of us.

