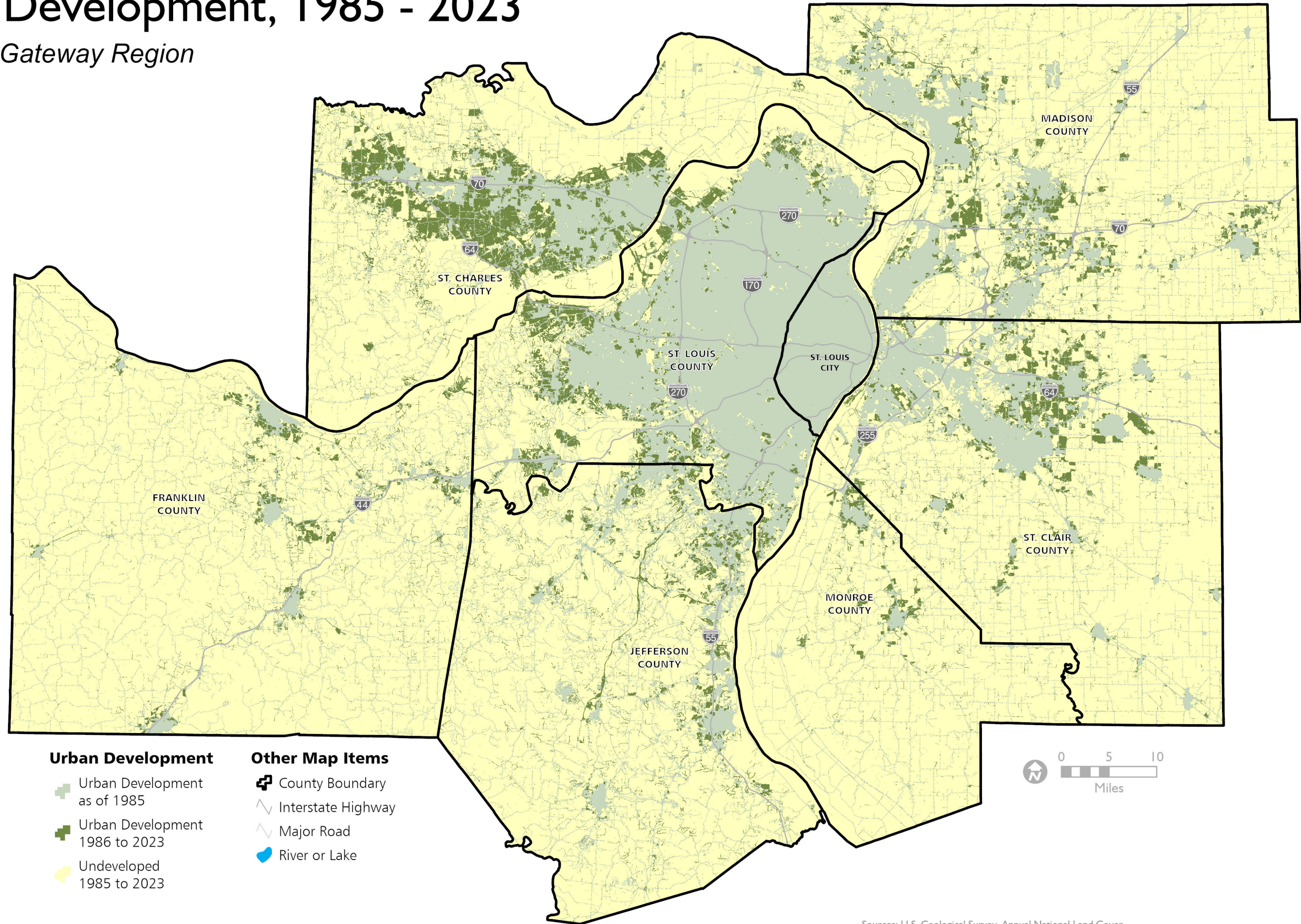


Urban Development, 1985 - 2023

East-West Gateway Region



Urban Development

- Urban Development as of 1985
- Urban Development 1986 to 2023
- Undeveloped 1985 to 2023

Other Map Items

- County Boundary
- Interstate Highway
- Major Road
- River or Lake

Sources: U.S. Geological Survey. Annual National Land Cover Database (NLCD) Collection 1.0 Impervious Descriptor product for 1985-2023; East-West Gateway Council of Governments

