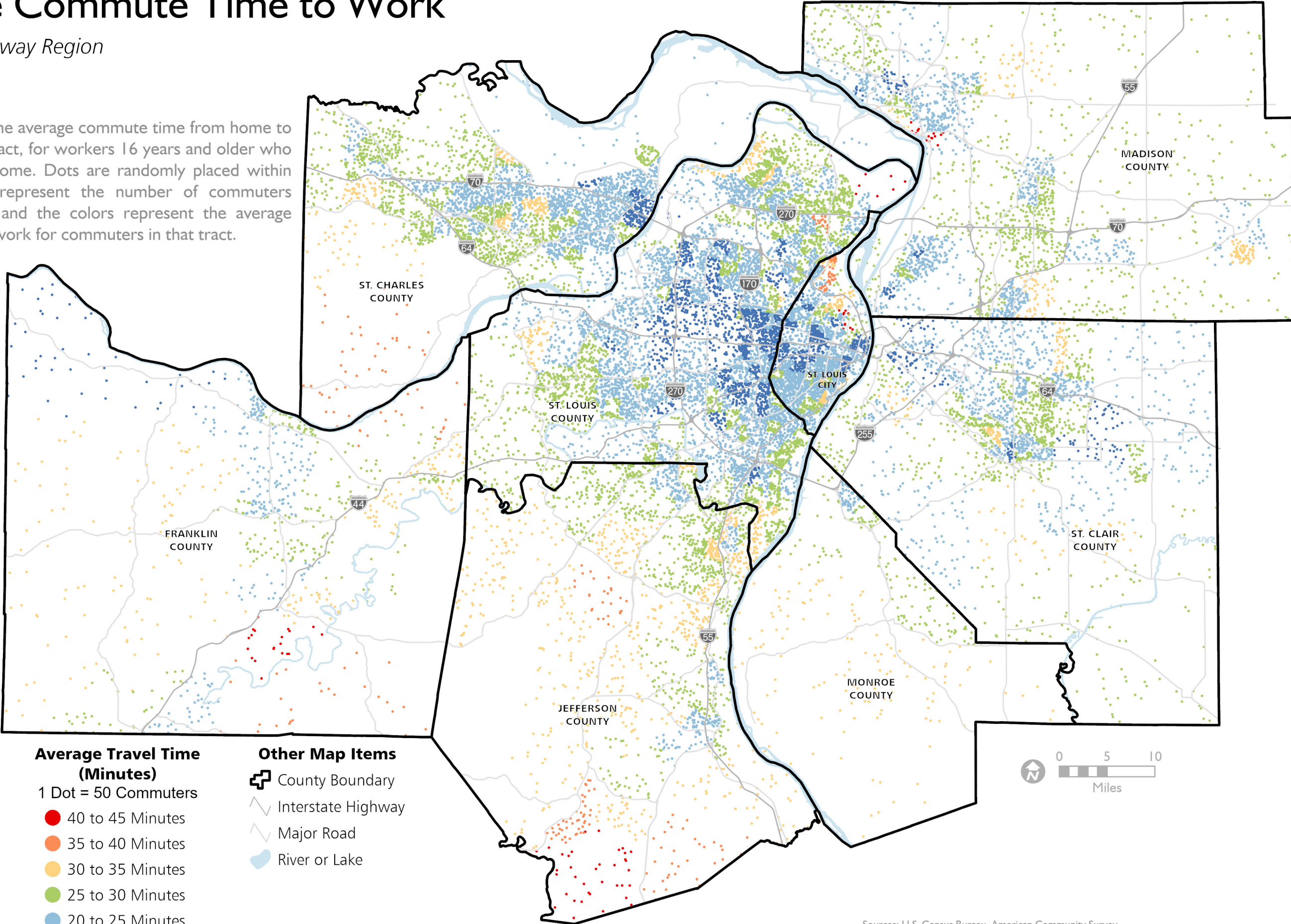


Average Commute Time to Work

East-West Gateway Region

This map depicts the average commute time from home to work, by census tract, for workers 16 years and older who did not work at home. Dots are randomly placed within census tracts to represent the number of commuters within that tract, and the colors represent the average commute time to work for commuters in that tract.



- Average Travel Time (Minutes)**
- 1 Dot = 50 Commuters
 - 40 to 45 Minutes
 - 35 to 40 Minutes
 - 30 to 35 Minutes
 - 25 to 30 Minutes
 - 20 to 25 Minutes
 - Under 20 Minutes

- Other Map Items**
- ⊕ County Boundary
 - ⚡ Interstate Highway
 - ⚡ Major Road
 - 🌊 River or Lake



Dots are randomly placed within 2020 Census tracts. Tract boundaries are not shown on the map.

Sources: U.S. Census Bureau, American Community Survey
5-Year Estimates (B08013), 2018-2022;
East-West Gateway Council of Governments