



# Dense Urban Terrain Training Exercises, July 14-18, 2024

Director Samantha Lewis, STARRS

Presentation to the East-West Gateway Council of Governments

Board of Directors Executive Advisory Committee

June 18, 2024



EAST-WEST GATEWAY  
Council of Governments

 STARRS



# Task Force - 46, U.S. National Guard



- The leading U.S. Army chemical, biological, radiological, and nuclear response force for homeland security.
- Drills stress coordination and best practices among local and military responders in the wake of a catastrophic disaster.
- First time St. Louis has been chosen by this elite force as a full-scale, multi-incident drill site.
- About 1,000 individuals expected to participate.



# Exercise Scenario Timeline



## Seismic Activity

- Significant seismic activity recorded along New Madrid Seismic Fault.
- Triggers Governor Disaster Declaration
- Triggers NORTHCOM CRPL increase for All-Hazards units

## Seismic Event

- 8.4 magnitude earthquake on New Madrid Fault, affecting MO, IL, KY, AR, MS, AL, TN.
- Renders most EMACs unavailable.
- Presidential Disaster Declared.

## Emergency Response

- Initial response elements overwhelmed
- MO requests federal assistance.
- Joint Operational Area established in MO with all counties affected.





# Exercise Scenario Timeline - Continued

**INTSUM:** Intelligence Agencies note increased domestic terrorist activity with potential CBRN effect.



E  
N  
D  
E  
X



**Mission Complete**

## Busch Stadium

- Busch Stadium suffers severe structural damage during baseball game.
- Recon/US&R response required.
- Vinyl Chloride release IVO necessitates MCD.

## River Crossing

- Bridges are damaged following seismic event.
- Necessitates ferrying of vehicles, equipment operations and personnel.

## BNSF Linwood Train Yard

- Seismic event triggers railcar derailment.
- Propane leak detected.
- Chemical reconnaissance and capping operations required.



EAST-WEST GATEWAY  
Council of Governments

 **STARRS**

# Key Exercises

## **Busch Stadium** - medical search and rescue, medical transport, mass casualty decontamination and CBRN reconnaissance (chemical, biological, radiological & nuclear)

- 44,125 fans inside Busch Stadium when 8.4 magnitude earthquake strikes.
- Estimated 30,000 casualties reportedly trapped inside.
- Over 14,000 casualties evacuated and located in area emergency shelter facilities.

## **Linwood Rail Yard (near HWY 44 & Arsenal)** - fire and chemical response, capping

- Freight train carrying toxic chemicals derails and catches fire on the outskirts of St. Louis, forcing residents to evacuate.

## **Missouri River (Wood River - St. Charles Ferry Crossing)**

- Damaged bridges require emergency river crossings/ vehicle and equipment transport.

## **Anti-Terrorism**

- Intelligence exercises throughout three-day event.



# 40 Partnering Agencies

- Task-Force 46
- St. Louis City Office of Emergency Management
- St. Louis County Office of Emergency Management
- St. Charles County Office of Emergency Management
- Franklin County Office of Emergency Management
- Jefferson County Office of Emergency Management
- Madison County Office of Emergency Management
- Monroe County Office of Emergency Management
- St. Clair County Office of Emergency Management
- St. Louis Fire Department
- St. Louis County ECC
- St. Louis Metropolitan Police Department
- St. Charles County 911
- SCSESA
- St. Louis Co Public Health
- HOPE Coalition
- St. Louis Fusion Center
- City of St. Louis Department of Public Health
- SCCAD
- Fenton Fire Department
- Jersey County, IL
- Medstar Ambulance
- Mercy Hospital
- BJC Healthcare
- Bi-State Metro
- VA
- Busch Stadium
- BNSF Railroad
- Ameren
- Illinois State Police
- Various Non-Profit Organizations
- Missouri SAVE Coalition
- Missouri Department of Public Safety
- Missouri State Emergency Management Agency
- State of Illinois Emergency Management Agency
- Missouri State Highway Patrol
- CISA
- EPA
- Mo Army National Guard



# Highlights & Additional Info

- Live role playing and mannequins
- Main staging area: Just south of Busch
- Helicopter airlift/transport (mannequin)
- Security / Traffic Control Plan at Busch
  - Clark & 8th Streets closed
  - Patient Movement Timeline
- SAVE Coalition Plan
- Emergency Management Process Expectations
- EMS Rig (ISO real-world injuries/ incidents)



# Media/Communications

## General Community Notifications

- Downtown Building Managers
- St. Louis Police and city hall social media and email
- Partner PIOs will do social media
- EWG social media
- EWG Local Government Briefings
- Fliers to buildings around the stadium
- Signage

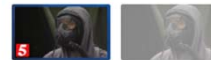
## Media

- Media Morning just prior to exercises
- Media Story Pitches ahead of event
- Press releases and advisories
- Pre-registration required for on-site coverage and stories

## Nashville first responders and military unite in emergency response training



Military partnered with multiple city and state agencies for a large emergency preparedness training exercise.



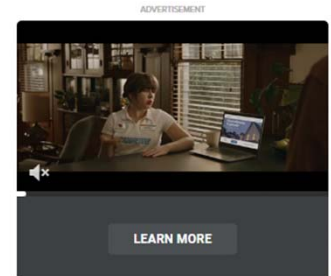
By: Kelsey Gibbs

Posted at 5:31 PM, Aug 10, 2023

NASHVILLE, Tenn (WTVF) — A city no stranger to the challenges of natural disasters and other emergencies, Nashville saw its first responders, along with federal partners, coming together this week to engage in a comprehensive disaster training exercise.



Our gift to the Nashville community



EAST-WEST GATEWAY  
Council of Governments

STARRS





**QUESTIONS?**

**Thank you!**



EAST-WEST GATEWAY  
Council of Governments

