



Save Lives Now!





Call to Order

Jim Wild

East-West Gateway Council of Governments





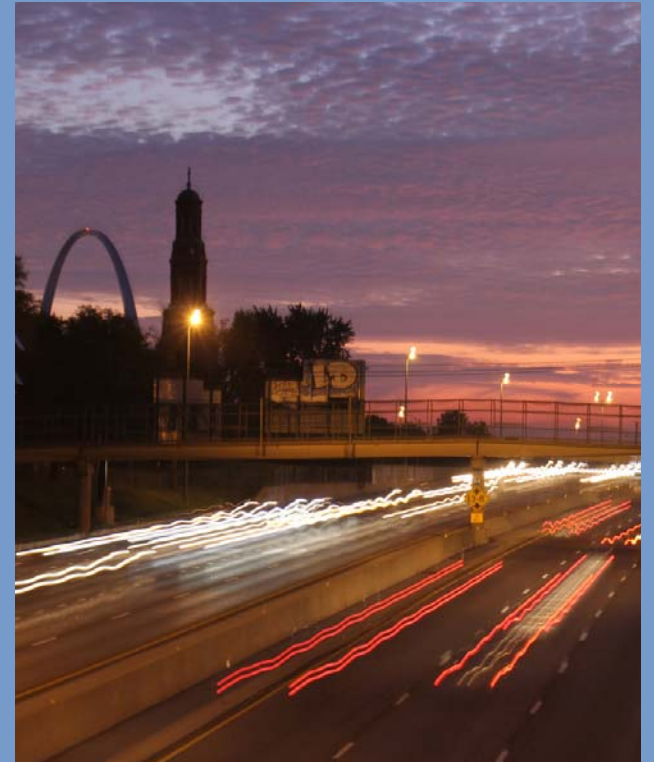
Welcome and Overview

Dr. Sam Page

St. Louis County Executive

Tishaura Jones

City of St. Louis Mayor





Save Lives Now! (SLN!) is a regional anti-violence initiative that will reduce homicides & shootings by 20% over 3 years



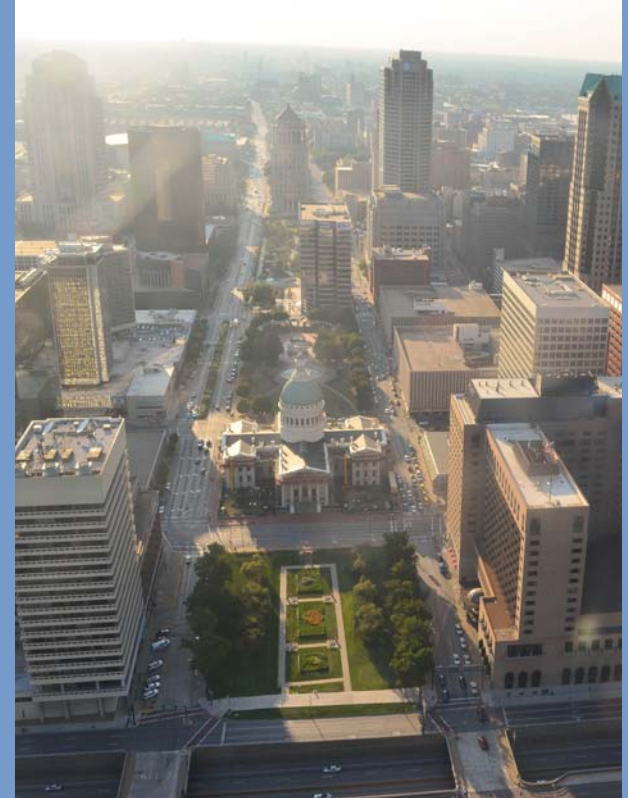
Updated Violence Analysis

Lee Slocum

University of Missouri St. Louis

John Posey

East-West Gateway Council of Governments





Thank You

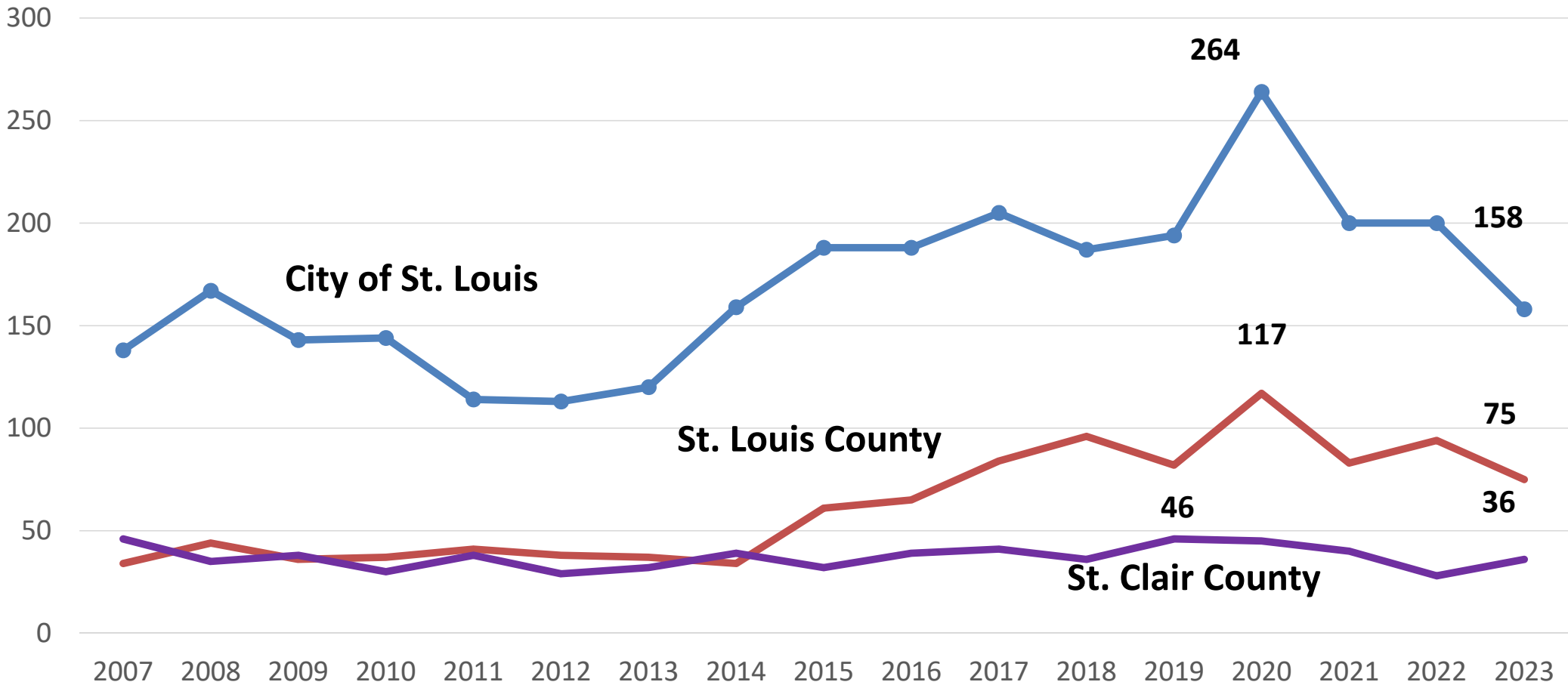
- St. Louis Gateway Strike Force
- REJIS
- FBI
- St. Louis County Police Department
- St. Louis Metropolitan Police Department
- Robert Boxerman, UMSL
- Ted LaBoube, East-West Gateway
- Illinois State Police
- Office of St. Clair County States' Attorney



Overview

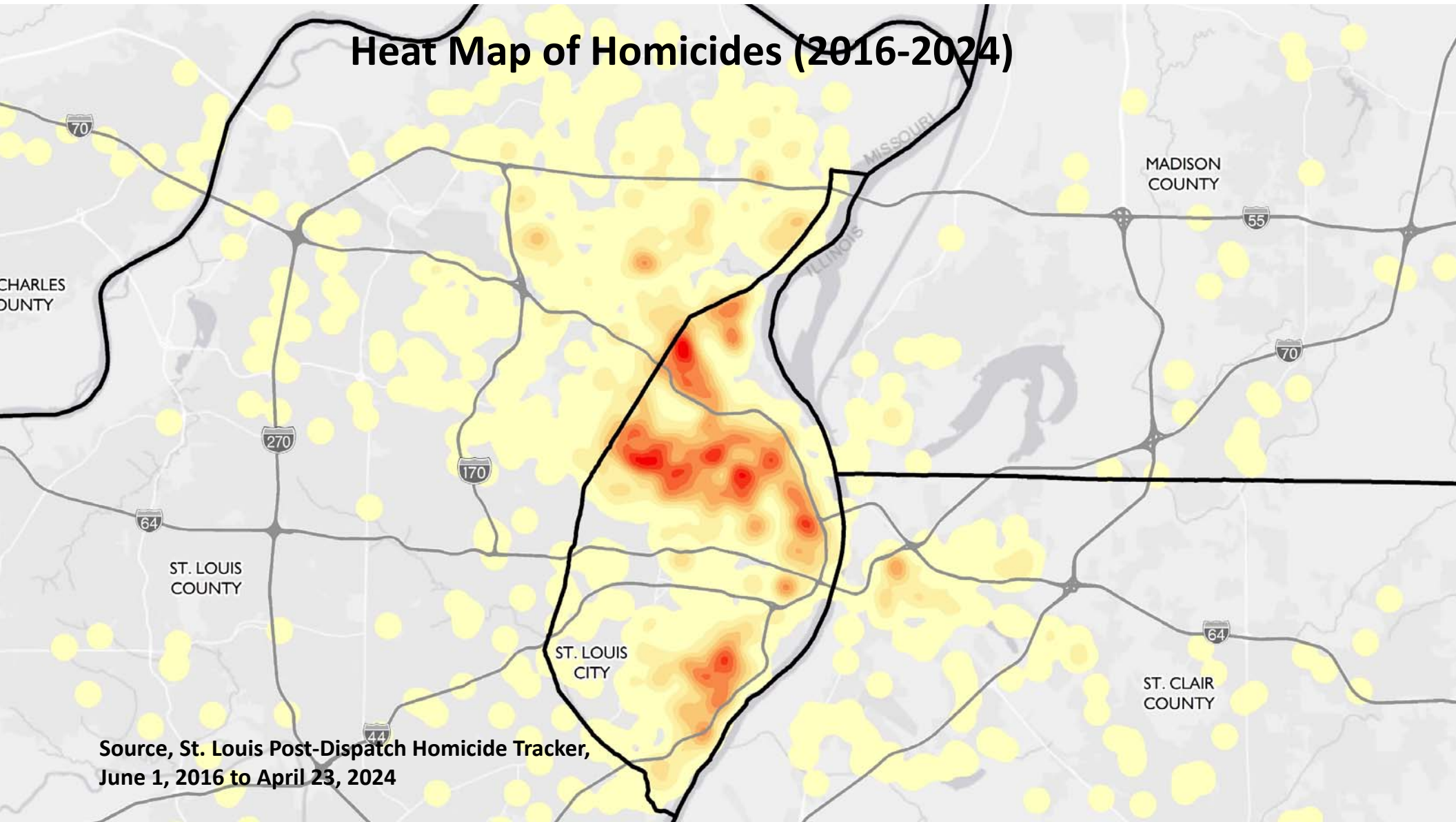
- Homicides (and shootings) present a regional challenge
- In 2022, St. Louis region had 7th highest homicide rate among top 40 largest metropolitan areas
- More than 95% of homicides occurred in City of St. Louis, St. Louis County, and St. Clair County
- Analysis focuses on homicide data from these three counties

Homicides by County 2007–2023



Source: St. Louis Post-Dispatch Homicide Tracker <https://graphics.stltoday.com/apps/homicide-tracker/2024/>; Missouri State Highway Patrol, showmecrime.mo.gov; Illinois State Police, Crime in Illinois, <https://isp.illinois.gov/CrimeReporting/CrimeInIllinoisReports>

Heat Map of Homicides (2016-2024)



Source, St. Louis Post-Dispatch Homicide Tracker,
June 1, 2016 to April 23, 2024

Updated Homicide Victim and Suspect Overview (2023)

Sex	Victims (n=252)	Suspects (n=217)
Male	83%	93%
Female	17%	7%
Race		
Black	85%	89%
White	14%	10%
Other	1%	.5%

*St. Louis City and County Only

Source: Show Me Crime 2023 Summary Reporting System Homicide Incident Data. Accessed at <https://showmecrime.mo.gov/public/View/RSReport.aspx?ReportId=16>

Updated Homicide Victim and Suspect Overview, Cont'd (2023)

	Victim Age (n = 259)	Suspect Age (n=256)
17 and under	8.1 %	14.5 %
18 - 24	24.7 %	28.5 %
25 - 34	30.5 %	28.5 %
35 to 44	18.0 %	13.3 %
45 to 54	10.8 %	10.2 %
55+	7.8 %	5.1 %

*St. Louis City and County. St. Clair County, including East St.Louis

Source: Show Me Crime 2023 Summary Reporting System Homicide Incident Data. Accessed at <https://showmecrime.mo.gov/public/View/RSReport.aspx?ReportId=16>



Updated Homicide Victim and Suspect Overview, Cont'd (2023)

- About 2/3 of victims had been previously arrested
- About 3/4 of suspects had been previously arrested
- 17% – 30% of homicides involved victims or suspects who live outside the jurisdiction in which homicide took place

Homicide Incident Overview

Incident Motivations	N	All Incidents (n=212)	Excluding Unknown (n=160)
Personal dispute	48	23%	30%
Intimate partner violence	35	17%	22%
Robbery	28	13%	17%
Drug-related dispute	28	13%	17%
Group-related dispute	12	6%	8%
Other	9	4%	6%
Unknown	52	25%	

Note: 93% of homicide incidents involved a firearm



Key Take Aways

- Homicide has declined since its peak in 2020
- Homicide is concentrated in small geographic areas
 - Many areas of concentration are in St. Louis City and surrounding areas – homicide is regional issue
- Serious violence clustered among small group of victims and suspects
 - Victims and suspects have nearly identical characteristics (sex, race, age)
 - Individuals involved in homicides span a wide age range – not just juveniles
 - Both victims and suspects have significant prior contact with criminal justice system
- There is a need for timely regional data on serious violence



First Principles for Community Violence Reduction

Thomas Abt

Center for the Study and Practice of Violence
Reduction, University of Maryland





Community violence is concentrated

- In U.S. cities, 4% of geography accounts for half of all crime (Weisburd, 2015), half of murders involve less than .06% of the city's population (Lurie et al., 2018),
- Looking across hundreds of evaluations, those focusing on highest risk people and places outperform those that don't
- Displacement a concern, but “over 30 years of research evidence... suggests that crime relocates in only a minority of instances” (Johnson et al., 2014)



Community violence responds to punishments and rewards

- Across hundreds of evaluations, support for both “soft” and “tough” approaches (Abt and Winship, 2016)
- No city has successfully used only one or the other – must combine sustainability of prevention with immediacy of enforcement



Community violence increases with injustice

- Community violence closely connected to legitimacy: less fairness leads to more violence, e.g. Ferguson, Minneapolis, Memphis (Abt, 2019)
- Procedural fairness has helped police officials rebuild trust, improve compliance, and promote collaboration (Brunson et al., 2015)
 - Includes respectful treatment, unbiased and transparent decision-making, giving opportunity to be heard, i.e. "voice"
 - Not just for street encounters – should be part of policymaking process



Focus. Balance. Fairness.

1. Because community violence is concentrated, focused strategies are most effective
2. Because it responds to both rewards and punishments, balanced approaches are required
3. Because it thrives in presence of injustice, fairness is essential



***These are the three essential principles
of effective community violence reduction***



About Save Lives Now!

Jim Wild

East-West Gateway Council of Governments

Thomas Abt

Violence Reduction Center

Serena Muhammad

St. Louis Mental Health Board

Juan Cox

St. Louis County Police Department





Why We Are Here

- Violent crime remains high in St. Louis
- Significant trauma and loss
- National & international negative assumptions
- Worry about our downtown and its future
- Regional frustration needs a regional approach
- Demand for change



Partnership



SAINT LOUIS COUNTY
Missouri



ST. CHARLES COUNTY



JEFFERSON COUNTY, MISSOURI



EAST-WEST GATEWAY
Council of Governments

UMSL
University of Missouri–St. Louis

VRC Violence
Reduction
Center



Progress to Date & Timeline

TODAY

First meeting of
Advisory Council

May 2023

Regional Crime
Summit Held

Jan–Mar 2023

Implementation
team develops
plan

Summer 2024

SLN! director and staff hired

2025

Focused Deterrence, CBT,
and Street Outreach begin

Dec 2023

Regional Violence
Practicum Held

Feb 2024

EWG Board of Directors
approves plan and
organizational structure

Fall 2024

Technical assistance
and training secured

2025–2027

Implementation, board
meetings continue





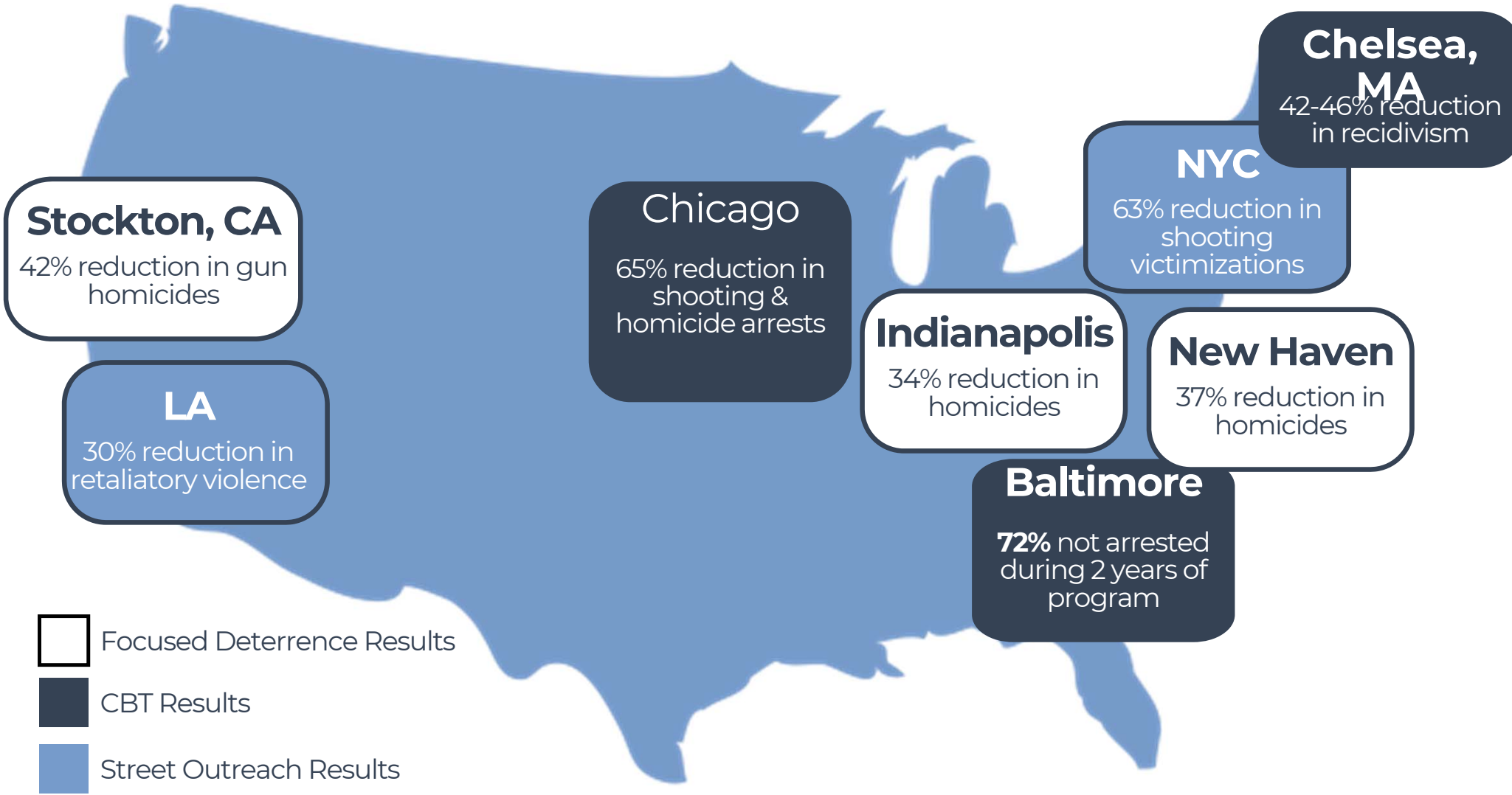
Save Lives Now! Plan




- **Mission:** To save lives across the St. Louis region by reducing homicides and shootings by 20 percent over three years
- **Vision:** Engage those at highest risk for violence, working to keep them alive, safe, and free, while holding those who shoot and kill fully accountable
- **Values:** Work should be regionally focused, informed by evidence and data, and humanity centered.



Save Lives Now! Plan

- **Three programmatic strategies:**
 1. Regional problem-oriented crime reduction strategy (“focused deterrence”) that mobilizes residents, service providers, and law enforcement in response to chronic crime conditions
 2. Cognitive behavioral theory (CBT) and other behavior change strategies to help high-risk individuals manage emotions, address conflicts constructively, and think carefully before acting
 3. Street outreach workers to ensure CBT-informed supports reach those who need them most



-  Focused Deterrence Results
-  CBT Results
-  Street Outreach Results



Save Lives Now! Plan

- **How it works**

- Save Lives Now! partners identify high-risk individuals and groups
- Communicate directly with message of empathy/accountability
- For those willing to disengage from violence, offer CBT-informed services and other supports
- For those who continue violence, respond with targeted enforcement action
- Repeat with more individuals and groups
- Work is done locally, with national TTA partners



Save Lives Now! Plan

- Plan depends on COLLABORATION
 - Between different jurisdictions
 - Between law enforcement, service providers, and community members
- Need structure to bring and keep stakeholders together



Save Lives Now! Plan

- SLN! is that structure – will provide key technical and logistical support to ensure plan development and implementation
- SLN! activities include holding regular meetings, ensuring consistent communication between stakeholders, engaging experts, and tracking and sharing data
- SLN! has three components: advisory board, director and staff, and implementation team



Save Lives Now! Advisory Board

- Board members offer advice, guidance, feedback to implementation team, SLN! Director on plan implementation
- Cross-section of regional leaders and stakeholders: government, non-government, community
- Intended to be inclusive, no limit on membership
- Chaired by Mayor Jones, Executive Page
- Meets quarterly



Save Lives Now! Director and Staff

- SLN! Director and staff help drive day-to-day collaboration between law enforcement, governmental leaders, and other stakeholders
- Based out of East-West Gateway, which serves as fiscal sponsor
- Activities include holding regular meetings, ensuring consistent communication between stakeholders, engaging experts, and tracking and sharing data



Save Lives Now! Implementation Team

- Team members drive day-to-day implementation of SLN! plan
- Small group of governmental and nongovernmental officials with direct operational responsibilities for reducing violence
- Chaired by SLN! director
- Meets weekly



Next Steps

Jim Wild

East-West Gateway Council of Governments

Wilford Pinkney

Office of Violence Prevention

Jessica Meyers

St. Louis Area Violence Prevention Commission





Hire SLN! Director

- Job posting is out, please scan code and share with your networks
- Looking to fill position this summer
- Select qualifications:
 - Associate's degree or higher
 - Significant project management or related experience
 - Knowledge of criminal justice system
 - Ability to respect cultural differences
 - Strong interpersonal, written, and verbal communication skills





Engage Training and Technical Assistance Partners

- SLN! strategies are sophisticated, not easy to implement
- Looking to engage training and technical assistance (TTA) partners with right expertise and experience
- TTA partners will assist in developing strategy, training local partners, offering ongoing advice and guidance on implementation
- Have held information sessions already; procurement process is underway



Opportunities for Support

- Projected Budget to launch is \$1.5 million over 3 years for staff, technical assistance, and training, but there will be ongoing implementation costs
- East-West Gateway has agreed to be the fiscal sponsor. They will accept and manage funding on behalf of Save Lives Now!
- Have already received in kind support from East-West Gateway as well as financial support from Greater St. Louis Inc., the Municipal League of Metropolitan St. Louis, and the Regional Business Council



Opportunities for Support

- Two ways to support:
 - Direct financial contribution – contact East-West Gateway to support specific programmatic elements or general operating expenses
 - In kind – if you're already investing in or offering social services, coordinate and align with the Save Lives Now! effort and priorities



Discussion

Jim Wild

East-West Gateway Council of Governments

Serena Muhammad

St. Louis Mental Health Board





Learn more & get involved

Visit ewgateway.org/save-lives-now
or scan the QR code

Or email us:
savelivesnow@ewgateway.org





Timeline

