



EAST-WEST GATEWAY
Council of Governments

Gateway to Safer Roadways

St. Louis Regional Safety Action Plan

Draft Plan

5/21 EAC Meeting



Safe Streets and Roads For All (SS4A)

- USDOT program to reduce fatal & serious injury crashes (2021 Bipartisan Infrastructure Law)
- Funding goes to local communities
- \$5 Billion over 2022-2026
- Two Grant Types:
 - Planning and Demonstration
 - Implementation (**Safety Action Plan Required**)



Gateway to Safer Roadways



May 21, 2024



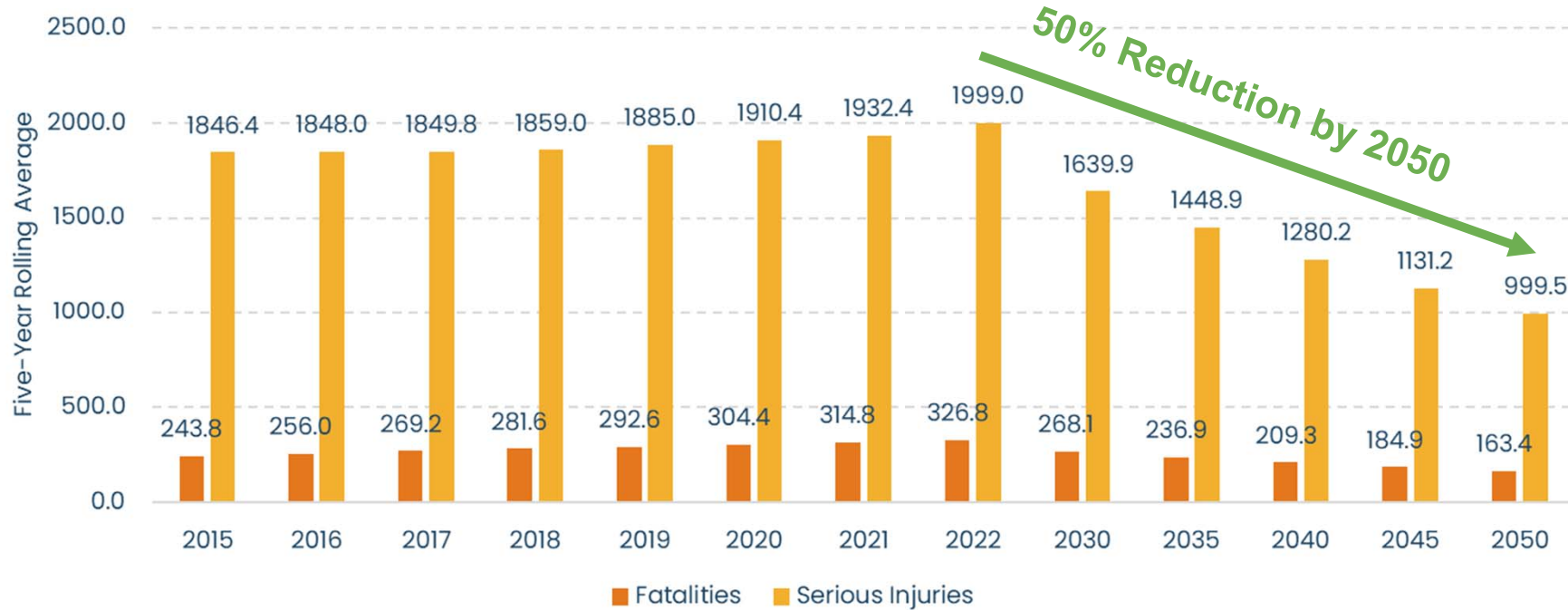
Safe Streets and Roads For All (SS4A)



- Planning and Demonstration
 - \$461,494,000 (FY 2024)
 - \$100K - \$10M per project
 - Entities in EWG Region are eligible 2024 - 2026
- Implementation
 - \$780,000,000 (FY 2024)
 - \$2.5M - \$25M per project
 - Entities in EWG Region will be eligible 2025 - 2026



Proposed Goal: Reduce crash fatalities and serious injuries by 50% by 2050 with a commitment to ultimately eliminate roadway deaths



The plan to reach **50% reduction by 2050**

- High-Injury Networks
 - Corridors, Intersections, Hot Spots
- Systemic Treatments
 - Roadway Departure, Intersections, Bike/Ped
- Policy and Programming
 - 16 Recommendations in 4 Areas



Making 50% reduction by 2050 happen

	% Complete	% Regional KSI	% Effective	% KSI Reduced
Top 10% HIN (Red)	95%	30%	75%	20%
Top 25% HIN (Orange)	95%	20%	50%	10%
Systemic	50%	95%	20%	10%
Policy and Programs	50%	95%	20%	10%
				50%



Gateway to Safer Roadway Plan Components

Engagement

Safety Analysis

Policy Review



Gateway to Safer Roadway Plan Components

Engagement

Safety Analysis

Policy Review



Engagement



Regional Taskforce

- Automobile Club of Missouri
- FHWA (IL)
- FHWA (MO)
- Franklin County
- Generate Health STL
- Great Rivers Greenway
- IDOT
- Illinois State Highway Patrol
- Jefferson County
- Madison County
- Metro
- Missouri Eastern Region Law Enforcement Liaison
- Missouri State Highway Patrol
- MoDOT
- Monroe County
- St. Charles County
- St. Charles County Ambulance District
- St. Clair County
- St. Louis City
- St. Louis County
- Trailnet
- Transform 314
- Urban League

County Stakeholder Groups

- St. Louis County
- St. Louis City
- Jefferson/Franklin Counties
- Madison/Monroe/St. Clair Counties
- St. Charles County

Social Media Campaign

What is Safe Streets for All?

Identifies the most significant roadway safety concerns in a community and the implementation of projects and strategies to address roadway safety issues.



Gateway to Safer Roadway Plan Components

Engagement

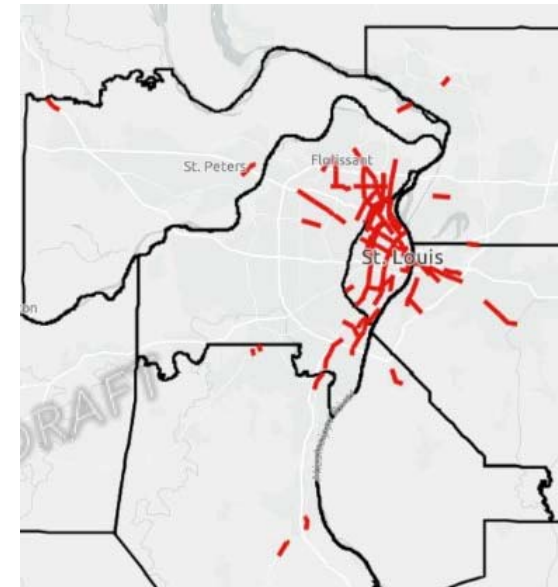
Safety Analysis

Policy Review



High-Injury Networks (HINs) Focus on the Worst Performing Roadways

- Mapping where high #s of people have been seriously injured/killed in traffic crashes
- 5 HINs for the EWG Region:
 1. All modes for all roads (except interstates)
 2. Vulnerable Road Users (non-motorized)
 3. Underserved communities
 4. Top contributing factors (speeding, failing to yield, improper lane use, impaired, distracted)
 5. Interstate and ramps collision hot spots
- HINs for Each County



Crash Risk Analysis: Systemic Treatments

- Identify high-risk roadway characteristics
 - Road characteristics (e.g., curves)
 - Driver Behavior (e.g., impaired)
 - Lighting conditions
 - Weather conditions
- Which countermeasures lower the risk?
 - Intersections
 - Roadway Departure
 - Vulnerable Road Users
 - Speed Management



Gateway to Safer Roadways

Speed Management



[Appropriate Speed Limits for All Road Users](#)



[Speed Safety Cameras](#)

Pedestrian/Bicyclist



[Bicycle Lanes](#)



[Crosswalk Visibility Enhancements](#)



[Medians and Pedestrian Refuge Islands in Urban and Suburban Areas](#)



[Pedestrian Hybrid Beacons](#)



[Road Diets \(Roadway Reconfiguration\)](#)



[Walkways](#)

Roadway Departure



[Enhanced Delineation for Horizontal Curves](#)



[Longitudinal Rumble Strips and Stripes on Two-Lane Roads](#)



[Roadside Design Improvements at Curves](#)



[SafetyEdgeSM](#)

Gateway to Safer Roadway Plan Components

Engagement

Safety Analysis

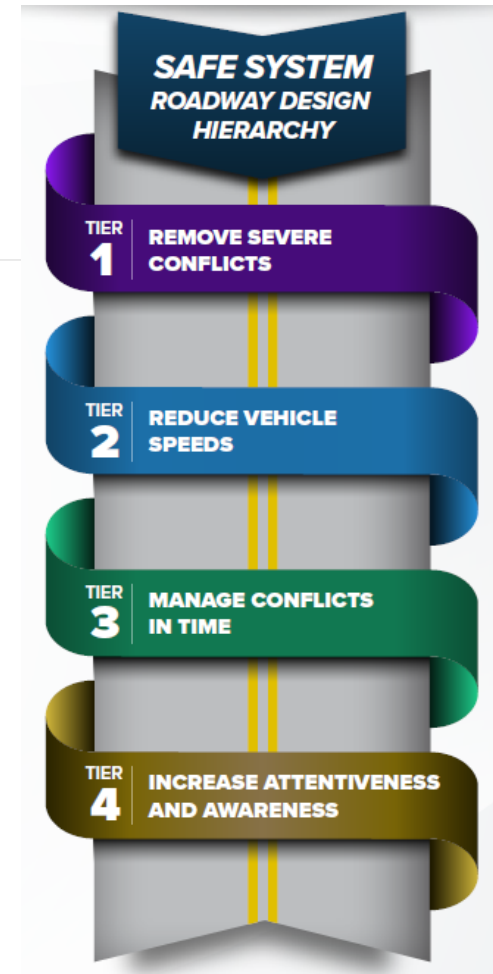
Policy Review



Regional Needs and Opportunities

9 Policy/Programming Needs & Opportunities

- 1 Speeding
- 2 Seatbelt Use
- 3 Helmet Use
- 4 Distracted Driving
- 5 Driver Impairment
- 6 Red Light Running
- 7 Bike/Pedestrian Safety
- 8 Unlicensed Drivers
- 9 Roadway Departure



Regional Policy and Program Recommendations

Safe Road Users

1. High school based road safety campaigns
2. Driver/Motorcycle license training in Missouri high schools
3. Public awareness roadway safety campaigns
4. Employer based safe driver training programs
5. Strengthen roadway safety laws in Illinois and Missouri
6. Promote existing seatbelt laws and encourage local governments in Missouri to pass primary seatbelt laws

Safe Roads

7. Review/Revise local engineering, planning and development policies, codes, and regulations
8. Incorporate transportation technology
9. Improve maintenance and operations
10. Support mobility for the elderly and disabled

Safe Vehicles

11. Telematics for fleet operators
12. Mandatory traffic safety devices for offenders
13. In-vehicle traffic safety devices for families
14. Size considerations of vehicles in public agency fleets

Enforcement

15. Automated enforcement (speed, red light running)
16. Enhanced enforcement (speed, seatbelt, red light running, impairment)



Mapping the 16 Recommendations to the 9 areas of Need and Opportunity

	Speeding	Seatbelt Use	Helmet Use	Distracted Driving	Driver Impairment	Red Light Running	Ped/Bike Safety	Unlicensed Drivers	Roadway Departure
1. High School Road Safety Campaigns	X	X	X	X	X	X	X	X	X
2. High School Driver License Training	X	X	X	X	X	X	X	X	X
3. Public Roadway Safety Campaigns	X	X	X	X	X	X	X	X	X
4. Employer Safe Driver Programs	X	X	X	X	X	X	X	X	X
5. Roadway Safety Laws in IL and MO		X	X	X					
6. Promote MO Local Seatbelt Laws		X							
7. Local Roadway Policies	X					X	X		X
8. Transportation Technology	X					X	X		X
9. Maintenance and Operations	X					X	X		X
10. Support Mobility for Older Adults							X		
11. Fleet Telematics	X	X		X					
12. Safety Devices for Traffic Offenders	X				X				
13. Family Traffic Safety Devices	X	X		X	X				
14. Public Agency Fleet Vehicle Size							X		
15. Automated Enforcement	X					X			
16. Enhanced Enforcement	X	X		X	X	X			



Build on Regional Strengths

How can we build upon what the region is already doing well?

Completed SS4A Safety Action Plans

- St. Charles County
- Kirkwood

SS4A Safety Action Plans Under Development

- Webster Grove
- East St. Louis

Examples of other Notable Safety Plans

- Jefferson County Road Safety Plan
- City Mobility Plan (in development)



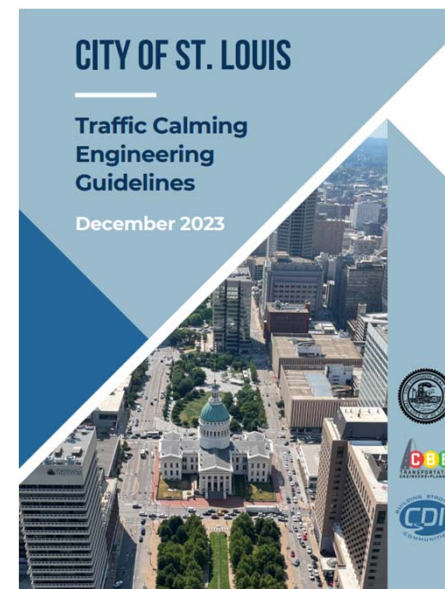
Gateway to Safer Roadways

AAA How to Drive online course



Online teen driver education

Prepare your teen for the road ahead with the AAA How to Drive Online course. This online program delivers the rules of the road and essential safe driving elements in an interactive and innovative way to help develop and maintain safe driving habits for life.



May 21, 2024



Achieving 50% by 2050: We all Have a Role

- **By 2030**

- **HIN:** Address top 5% of HIN
- **Systemic:** Pilot 2-4 new systemic treatments county-wide
- **Policy/Program:** Kick-start 2-4 priority policy recommendations

- **By 2035**

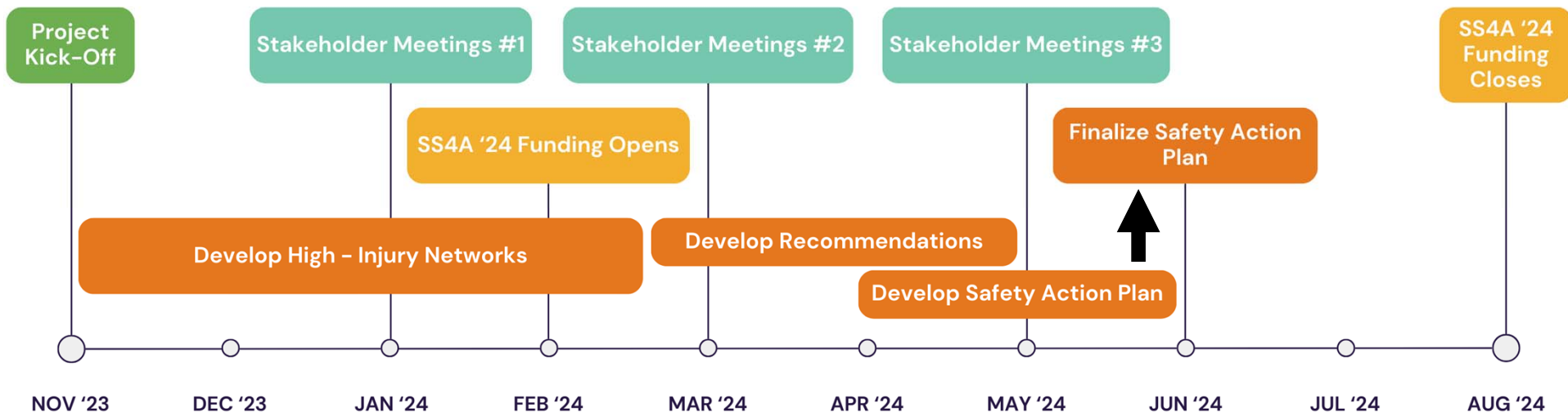
- **HIN:** Address top 10% of HIN
- **Systemic:** Implement 4-6 systemic treatments county-wide
- **Policy/Program:** Implement 4-6 policy recommendations

- **By 2050**

- **HIN:** Address top 25% of HIN
- **Systemic:** Implement relevant systemic treatments county-wide
- **Policy/Program:** Implement relevant policy recommendations



Gateway to Safer Roadways Timeline



THANK YOU

Questions?

CBB Transportation
Engineers + Planners

Shawn Leight
sleight@cbbtraffic.com

Joanne Stackpole
jstackpole@cbbtraffic.com



EAST-WEST GATEWAY
Council of Governments

