

AGENDA
EAST-WEST GATEWAY COUNCIL OF GOVERNMENTS
EXECUTIVE ADVISORY COMMITTEE
TUESDAY, FEBRUARY 19, 2019 – 2:00 PM

- 1. CALL TO ORDER**
- 2. APPROVAL OF MINUTES OF JANUARY 22, 2019**
- 3. DISCUSSION ITEMS**
 - A. OneSTL Report to the Region - - Aaron Young
 - B. MoDOT Statewide Funding Allocation Changes - - Jerry Blair
 - C. MetroLink System-Wide Security Assessment - - Lurae Stuart
- 4. ACTION ITEMS**
 - A. 2019 Regional Safety Performance Targets and Transit Asset Management Targets - - Sonya Pointer
 - B. Modifications to the FY 2019-2022 Transportation Improvement Program (TIP), *Connected 2045*, and the Related Air Quality Conformity Determination – Requested by Illinois and Missouri sponsors - - Josh Schwenk
- 5. OTHER BUSINESS**
- 6. ADJOURNMENT**

NEXT MEETING DATE: TUESDAY, MARCH 19, 2019



EAST-WEST GATEWAY
Council of Governments

Creating Solutions Across Jurisdictional Boundaries

Chair

Mark A. Kern
Chairman, St. Clair County Board

Vice Chair

Steve Ehlmann
County Executive
St. Charles County

2nd Vice Chair

Robert Elmore
Chairman, Board of Commissioners
Monroe County

Executive Committee

Tim Brinker
Presiding Commissioner
Franklin County

Dennis Gannon
County Executive
Jefferson County

Lyda Krewson
Mayor, City of St. Louis

Kurt Prenzler
Chairman, Madison County Board

Steve Stenger
County Executive
St. Louis County

Members

Ron Counts
Mayor, City of Arnold
Franklin County

Emeka Jackson-Hicks
Mayor, City of East St. Louis

Reggie Jones
St. Louis County

Mark Kupsky
Vice President,
Southwestern Illinois
Council of Mayors

Norman C. McCourt
Municipal League of Metro St. Louis

Roy Mosley
St. Clair County

Lewis Reed
President, Board of Aldermen
City of St. Louis

Herbert Simmons
President, Southwestern Illinois
Metropolitan & Regional
Planning Commission

Tom Smith
President, Southwestern Illinois
Council of Mayors

Michael Walters
Madison County

John White
St. Charles County

Regional Citizens

Barbara Geisman
C. William Grogan
Richard Kellett
John A. Laker

Non-voting Members

Erin Aleman
Illinois Department of
Transportation

Erika Kennett
Illinois Department of Commerce
and Economic Opportunity

Patrick McKenna
Missouri Department of
Transportation

Taulby Roach
Bi-State Development

Aaron Willard
Missouri Office of Administration

Executive Director

James M. Wild

Memo to: Board of Directors

From: Staff

Subject: Project Notifications

Date: February 11, 2019

Attached is the Project Notification list for January 12, 2019 – February 8, 2019. The compiled list is a result of the weekly list of projects from the Missouri State Clearinghouse for comments. The listing contains a summary table which includes grant applications, announcements, and public notices. If you have any questions regarding this attachment, please contact Carol Lawrence in the Community Planning department.

Gateway Tower
One Memorial Drive, Suite 1600
St. Louis, MO 63102-2451

314-421-4220
618-274-2750
Fax 314-231-6120

webmaster@ewgateway.org
www.ewgateway.org

**Project Notifications for East-West Gateway Council of Governments
January 12, 2019 – February 8, 2019**

JURISDICTION	APPLICANT	PROJECT DESCRIPTION	FEDERAL AGENCY	FEDERAL GRANT/LOAN	FUNDING: STATE, LOCAL/OTHER	TOTAL
St. Louis City St. Louis County	Young Women's Christian Association of Metropolitan St. Louis #1907017	Head Start Head Start and Early Head Start Services	HHS	\$18,531,900	Applicant: \$4,632,975	\$23,164,875
St. Louis County	ALIVE, Inc. #1908001	Legal Assistance for Victims ALIVE Legal Assistance Program for St. Louis Area Domestic Violence Victims	DOJ	\$434,144.91		\$434,144.91
Franklin County Jefferson County St. Charles County St. Louis County City of St. Louis	Legal Services of Eastern Missouri #1908002	Legal Assistance for Victims Lasting Solutions Project	DOJ	\$600,000		\$600,000

MINUTES

EAST-WEST GATEWAY COUNCIL OF GOVERNMENTS EXECUTIVE ADVISORY COMMITTEE JANUARY 22, 2019

Members Present

Tom Curran, St. Louis County, MO, *Chair*
Tom Caldwell, IDOT
David Courtway, Jefferson County, MO
Gary Elmestad, St. Charles County, MO
Norman Etling, St. Clair County, IL
Noe Gonzalez, City of St. Louis, MO
Barb Hohlt, St. Clair County, IL
Kevin Jemison, IDOT
Pat Kelly, Municipal League Metro St. Louis
Stephanie Leon-Streeter, St. Louis County, MO
Jessica Mefford-Miller, Metro Transit
Bill Schnell, MoDOT

EWGCOG Staff:

Jim Wild, Royce Bauer, Jerry Blair, Joyce Collins-Catling, Ross Friedman, Nick Gragnani, Larry Grither, Dan Hutti, Frank Johnson, Peter Koeppel, Jason Lange, Carol Lawrence, Mary Grace Lewandowski, Maureen McCarthy, Christopher Michael, Zakari Mumuni, Anna Musial, Rachael Pawlak, John Posey, Mary Rocchio, Josh Schwenk, Himmer Soberanis, Michael Wohlstadter, Aaron Young

CALL TO ORDER

The Executive Advisory Committee was called to order by Norm Etling, Co-Chair.

APPROVAL OF MINUTES OF OCTOBER 23, 2018 MEETING

Motion was made by Mr. Jemison seconded by Ms. Leon-Streeter to approve the minutes of the October 23, 2018 meeting. Motion carried, all voting aye.

DISCUSSION ITEMS

Where We Stand – 8th Edition

Mary Rocchio, EWGCOG, gave an update on the 8th Edition of *Where We Stand* that was released on November 15, 2018. She pointed out that since 1992, East-West Gateway has produced the comparison of the St. Louis region and its peer regions in key performance metrics. Ms. Rocchio noted that although this edition continues to provide objective, reliable and verifiable data that can be used to assess the health and competitiveness of the St. Louis region, this edition also focuses on three strategic priorities discussed at the Board of Directors' retreat in May 2018: economic development, education and workforce, and crime and public safety.

Dan Hutti, EWGCOG, then gave an overview of the three focus areas pointing out key strengths, and challenges in each of those areas.

Ms. Mefford-Miller asked about the working groups that were recommended to address on the three focus areas. Mr. Wild responded that the working groups are still being assembled, and that a facilitator is being identified. Mr. Elmestad inquired if Dr. Sean Joe would be involved in any of the working groups. Mr. Wild answered that although Dr. Joe is actively involved in his initiative he has indicated he would participate as the working groups proceed. Mr. Wild noted that the *Where We Stand* document is available and can be viewed on the East-West Gateway website, and any questions can be directed to Council's Research Department.

2017 Annual Regional Congestion Report

Larry Grither, EWGCOG, reported on the Regional Congestion Management Process (CMP). He pointed out that it is requirement that East-West Gateway develop and implement a CMP that systematically monitors, measures, and diagnoses causes of current and future congestion on the region's multi-modal transportation system as well as evaluate and recommend alternative strategies to manage current and future regional congestion. Mr. Grither then gave an overview of the annual report highlighting a speed analysis for select locations, peak travel indexes, causes for congestion, greatest and total impact locations, severity, freeway rankings, trend analysis, and the process overall. Mr. Wild mentioned that the entire report is available on the East-West Gateway website and a link to the report would be sent out to committee members.

2020 All Hazards Mitigation Plan Update

Jennifer Vuitel, EWGCOG, discussed the 2020 update to the St. Louis Regional Hazard Mitigation Plan for the Missouri portion of the region. She mentioned that the plan only covers for natural disasters and addresses actions that local governments, special district, and school districts take to mitigate natural disasters, and is updated every five years. The plan covers the five year period 2020-2025 and she pointed out that the success of the plan depends on partner participation. Ms. Vuitel mentioned that the plan only covers the State of Missouri because Illinois uses a different planning process. She noted that a Working Group is being set up and will prepare workshops to be held in each county late spring/early summer to provide input and feedback on the draft plan. The draft plan will be completed by the end of 2019 and presented to the Board in October for adoption no later than January 2020.

FY 2020-2023 Transportation Improvement Program Development

Jason Lange, EWGCOG, provided an update on development of the FY 2020-2023 Transportation Improvement Program (TIP). He informed the Committee that this year's Surface Transportation Program (STP-S) and Congestion Mitigation and Air Quality Improvement Program (CMAQ) applications went online November 29th and are due February 14th. He noted that STP-S funds can be used on projects for road improvements such as resurfacing or reconstruction, bike/ped improvements, traffic flow improvements, transit investments, as well intersection improvements, and projects that reduce congestion and/or improving air quality. Mr. Lange then highlighted the program development activities schedule noting that staff will present the scored projects to the TPC, EAC and Board by the end May, and the draft TIP will be presented to the Board by the end of June prior to its release for public comment (June 28 through August 5). After the public comment period concludes, staff will summarize the comments and submit the TIP for final approval at the August Board of Directors' meeting.

ACTION ITEMS

Due to there not being a quorum, Chairman Curran announced that the EAC would discuss the action item topic item but no vote would be made.

Modifications to the FY 2019-2022 Transportation Improvement Program (TIP), Connected2045, and the Related Air Quality Conformity Determination – Requested by Illinois sponsors

Josh Schwenk, EWGCOG, summarized the request to add three new projects and modify one existing project from the Illinois Department of Transportation (IDOT) and Madison County Transit District (MCTD). Chairman Curran stated that the committee would recommend to the Board of Directors to approve staff’s request to revise the TIP adding three new projects and modifying one existing project.

The projects are summarized below:

TIP #	Sponsor	Action	Description
6667A-17	MCTD	Add	Heavy Duty Transit Buses; Purchase five new 30’ buses – fleet Expansion
6804Y-18	IDOT	Add	IL 160 – Highland Road to Clinton County line; Resurfacing
6886T-19	IDOT	Add	IL 3 – Poplar Street Complex (I-55/64); Bridge painting
6667A-17	MCTD	Modify	Heavy Duty Transit Buses; Replace nine buses

OTHER BUSINESS

Mr. Elmestad asked for an update/snapshot on the OneSTL Watershed Working Group. Aaron Young, EWGCOG, noted that the OneSTL Working Group in conjunction with the WRC has been documenting and researching approaches to existing watersheds as well as quantitative watershed plans. He also noted that the Working Group will be working with levee districts to evaluate their processes/procedures as well as promote water quality. Mr. Wild noted that Mr. Young would be providing an update of regional sustainability efforts at the February EAC and Board meetings.

ADJOURNMENT

Motion to adjourn the meeting was made by Mr. Schnell, seconded by Mr. Etling. Motion carried, all voting aye.

Respectfully submitted,



James M. Wild
Secretary, Board of Directors



EAST-WEST GATEWAY
Council of Governments

Creating Solutions Across Jurisdictional Boundaries

Chair

Mark A. Kern
Chairman, St. Clair County Board

Vice Chair

Steve Ehlmann
County Executive
St. Charles County

2nd Vice Chair

Robert Elmore
Chairman, Board of Commissioners
Monroe County

Executive Committee

Tim Brinker
Presiding Commissioner
Franklin County

Dennis Gannon
County Executive
Jefferson County

Lyda Krewson
Mayor, City of St. Louis

Kurt Prenzler
Chairman, Madison County Board

Steve Stenger
County Executive
St. Louis County

Members

Ron Counts
Mayor, City of Arnold
Franklin County

Emeka Jackson-Hicks
Mayor, City of East St. Louis

Reggie Jones
St. Louis County

Mark Kupsky
Vice President,
Southwestern Illinois
Council of Mayors

Norman C. McCourt
Municipal League of Metro St. Louis

Roy Mosley
St. Clair County

Lewis Reed
President, Board of Aldermen
City of St. Louis

Herbert Simmons
President, Southwestern Illinois
Metropolitan & Regional
Planning Commission

Tom Smith
President, Southwestern Illinois
Council of Mayors

Michael Walters
Madison County

John White
St. Charles County

Regional Citizens

Barbara Geisman
C. William Grogan

Richard Kellett
John A. Laker

Non-voting Members

Erin Aleman
Illinois Department of
Transportation

Erika Kennett
Illinois Department of Commerce
and Economic Opportunity

Patrick McKenna
Missouri Department of
Transportation

Taulby Roach
Bi-State Development

Aaron Willard
Missouri Office of Administration

Executive Director

James M. Wild

Memo To: Board of Directors
From: Staff
Subject: 2019 OneSTL Report to the Region
Date: February 12, 2019

In December 2013, the Board of Directors approved OneSTL, the regional plan for sustainable development. OneSTL provides a vision, goals and strategies related to a broad set of issues identified during the 2010-2013 planning process that began with 11 partners and included more than 50 organizations. East-West Gateway, along with its partner organizations, is releasing the 2019 OneSTL Report to the Region. The Report provides an update on OneSTL performance indicators and highlights initiatives that are helping to reach the goals of the Plan.

East-West Gateway staff monitors 57 indicators that reflect the goals and objectives in the Plan. Monitoring of the indicators is an ongoing process that involves collecting information from many sources. The indicators are measured from a baseline year (usually 2010) and track progress over time. As of December 2018, 62 percent of the indicators were moving in the desired direction. More information on the individual indicators can be found at www.onestl.org/indicators.

Six Working Groups meet on a regular basis to implement strategies to help achieve OneSTL Plan goals and work on moving a set of Performance Indicators to a Target identified at the 2017 Sustainability Summit. The Working Groups are Biodiversity, Energy and Emissions, Food Access, Materials and Recycling, Transit Oriented Development, and Water and Green Infrastructure.

The Sustainability Lab @ T-Rex (Lab) was created in 2017 and is a partnership between OneSTL and T-Rex, the downtown St. Louis business incubator. The Lab provides OneSTL working groups the opportunity to meet regularly and provides a space to bring together businesses, non-profits and government employees for learning, creativity, and collaboration to advance sustainability in the region. Eleven Labs were held in 2018 with over 500 attendees. Beginning in 2019, satellite Labs will be held in multiple locations with tentative venues in Alton, IL and St. Peters, MO. For more information on OneSTL visit www.onestl.org.

Gateway Tower
One Memorial Drive, Suite 1600
St. Louis, MO 63102-2451

314-421-4220
618-274-2750
Fax 314-231-6120

webmaster@ewgateway.org
www.ewgateway.org

2019 Report to the Region: *Measuring Our Progress*



PLAN FOR A PROSPEROUS, HEALTHY, VIBRANT ST. LOUIS REGION

WHAT'S INSIDE:

Letter from the Editor

2018 Updates

- Indicators Summary
- Sustainability Lab @ T-Rex
- Network Structure

Working Group Summaries

- Biodiversity
- Energy and Emissions
- Food Access
- Materials and Recycling
- Transit Oriented Development
- Water and Green Infrastructure

Back Cover - Get Involved



LETTER FROM THE EDITOR

Greetings!

Thank you for picking up the 2019 OneSTL Report to the Region. In the following pages you'll read about the status of 57 sustainability indicators, general updates of OneSTL, activities of regional Working Groups, and what we hope to accomplish in the upcoming year.

OneSTL is a collaboration to encourage and support greater sustainability within the eight-county St. Louis region. Our vision is a prosperous, healthy, and vibrant region accomplished through a dynamic network of organizations and individuals sharing ideas, expertise, and resources to meet our regional sustainability goals.

In 2017, OneSTL partners held a Sustainability Summit, an outcome of which was the selection of six focus areas and Working Groups including: biodiversity, greenhouse gas emissions, access to healthy food, transit oriented development, waste reduction, and water quality and green infrastructure. The Working Groups, their activities, and their selected Targets are described on pages 6-11.



The Working Groups meet regularly to discuss how to collaboratively achieve the accepted Targets. You can learn from the Working Groups and get involved through our monthly sustainability labs at T-Rex in downtown St. Louis. Held on the last Tuesday of the month, the Sustainability Lab @ T-Rex was created as a venue to have interactive and educational discussions on specific topics related to the Targets in addition to general sustainability. The Labs are open and free for anyone to attend. The schedule for 2019 is listed on page 4. I hope you can join us for one this year.

If you would like to participate in a Working Group, help communicating or organizing a OneSTL activity, or simply would like more information, drop us a note: www.onestl.org/contact-us. If you have a particular interest in one or more of the Targets described, join organizations like Curium, Washington University, and Nine Network and show your support by signing on to our buy-in statement at onestlargets.org.



Sincerely,

Aaron Young

Aaron Young
Sustainability Planning Manager

2018 UPDATES

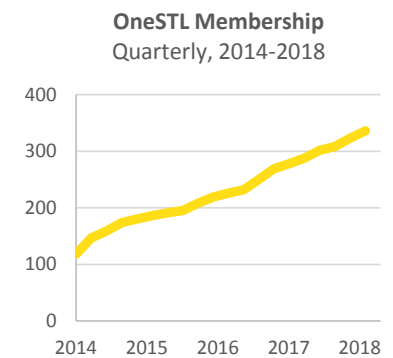
Performance Indicators

East-West Gateway tracks 57 performance indicators that measure the region's progress toward sustainability. These indicators are updated on an annual basis, as new data is made available. There is trend data to report on 50 of the 57 performance indicators. Of this total, 62 percent are moving in a desirable direction, 8 percent are not moving, and another 20 percent are moving opposite of the desired direction. Below are a few key takeaways of the performance indicators. You can view much more on all of the OneSTL performance indicators by going to OneSTL.org/indicators.



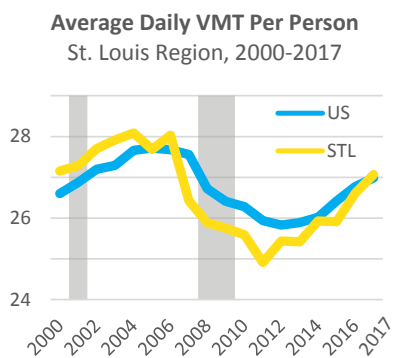
A growing number of people are engaging with OneSTL.

At the end of 2018, the OneSTL Network included 336 members up from 122 five years ago and 288 just last year. An increasing number of people are also engaged with the plan through the OneSTL website, with over 6,700 unique online visitors in 2018. Many people also engage with OneSTL on the last Tuesday of every month at the Sustainability Lab @ T-Rex. In 2018, OneSTL Sustainability Labs had an average monthly attendance of 50 people.



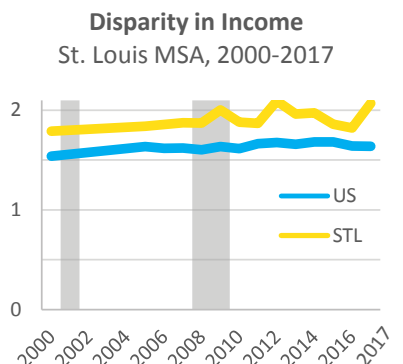
St. Louis is becoming a more connected region.

There are over 900 miles of bicycle facilities throughout the region up from an estimated 650 miles five years ago. Expanding bicycle facilities throughout the region enables healthy living and connectivity, and a number of municipalities in our region are committed to this goal. As of 2018, 22 local governments have adopted Complete Streets policies.



St. Louis remains auto-dependent.

Driving continues to be the chosen mode of transportation for most St. Louis workers, and auto-trips are becoming longer. The average St. Louisan travels 27 miles per day in a vehicle, up from 25.6 in 2010. This increase is associated with an improving economy and low gas prices, but the rise in vehicle miles of travel also means an increase in harmful pollutants including greenhouse gases and contributors to ground-level ozone. Providing transportation options for people who wish to walk, bike, or use transit can enhance individual choice while improving air and water quality.



St. Louis struggles with equity and inclusion.

While the region is becoming more prosperous in many respects, there are large gaps between white and black residents of St. Louis. The median income of white households is more than two times greater than the median income of black households; white adults have college attainment rates that are twice as high as black adults; and poor black residents are nearly 20 times as likely to live in an area of concentrated poverty as poor white residents.

Sustainability Lab @ T-Rex

The **Sustainability Lab @ T-Rex** is a partnership between OneSTL and T-Rex, the downtown business incubator. At the Lab, working groups and individuals meet regularly to collaborate and share successes, lessons, and challenges. More than 540 people attended 11 labs in 2018.

Conversations continued at the lab with the St. Louis Food Policy Coalition addressing food access in the region, the International Society of Sustainability Professionals focusing on drivers of sustainability, and the NAACP discussing equitable energy policy. New activities at the Lab in 2018 included mentoring sessions and a speaker series in collaboration with the American Planning Association, the American Institute of Architects, and the American Society of Landscape Architects.

In 2019, we will continue to hold Labs on the last Tuesday of the month at T-Rex, and we'll be adding satellite events in Alton and St. Peters. More information will be posted on the Sustainability Lab webpage. To attend, see the information in the box below.

For more information about attending or presenting, go to www.onestl.org and click on the T-Rex logo!



T-Rex is located at 911 Washington Ave. in downtown St. Louis.

2019 Sustainability Lab Dates
3:30 PM – 7:00 PM

- January 29
- February 26
- March 26
- April 30
- May 28
- June 25
- September 24
- October 29
- November 26
- July 30
- August 27



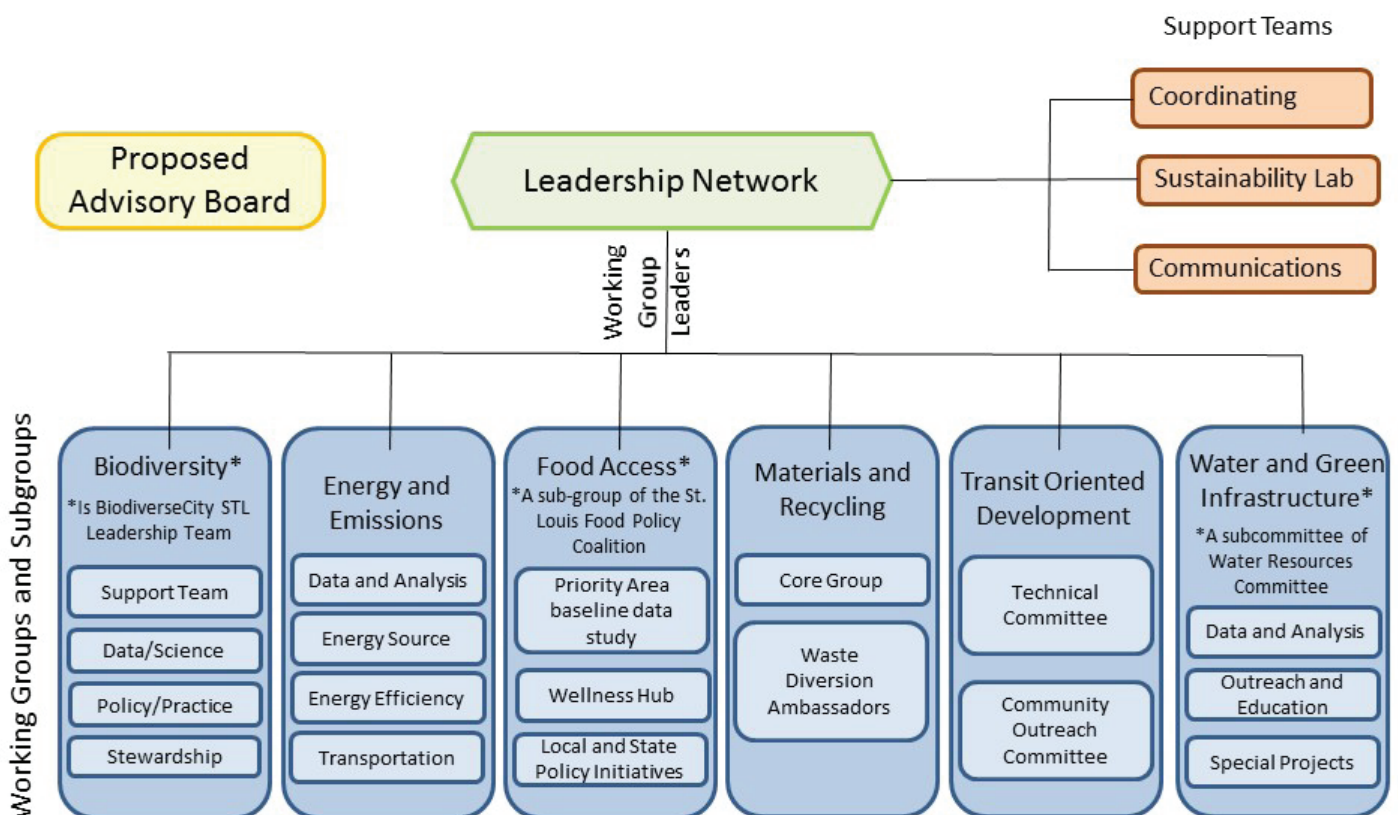
Sustainability Lab @ T-Rex – August 28, 2018,
courtesy of Jenn DeRose

Evolving OneSTL Network

The **OneSTL Network** began in 2014 to keep individuals engaged in the OneSTL Plan for regional sustainability. Between 2014 and 2017, members received communications via an email newsletter, and the OneSTL steering committee became the Leadership Network, which met quarterly.

In 2017, the OneSTL Network began to take on a more formal structure. After the regional Sustainability Summit, six Working Groups formed to help achieve a set of sustainability targets (see pages 6-11). Three support teams began to help with administration needs including general coordinating activities, organizing the Sustainability Labs, and strategizing communication. In 2019, we will explore creating an executive-level Advisory Board. Read more about the working groups and administrative teams at <http://www.onestl.org/get-involved>.

Agencies, organizations and individuals from across the region have shown their support and expressed commitment to help advance the OneSTL Targets. Please take a moment to visit <http://onestltargets.org>.



BIODIVERSITY

Why It Matters

Biodiversity is the variety of all life on Earth including interactions among all species. Our region depends on biodiversity, not only for the air we breathe, the water we drink, and the food we eat, but also for the basic health, livability and economic prosperity of our region.

Target

By 2025, 100 percent of counties in the Combined Statistical Area of St. Louis are using the Regional Biodiversity Atlas (from a 2018 baseline) to actively guide their planning, policies and practices in ways that increase habitat connectivity, ecological functionality, and quality of life for all.

Working Group Activities

2018: Natural resource experts reviewed ecological data available at the regional and MSA scale and provided input into an ecological data inventory. The inventory will be circulated to planners, municipalities, counties and developers for use in planning efforts. Also during this time, BiomeSTL: Biodiversity of Metropolitan St. Louis was launched. The project will include a Vision Framework, Atlas and Action Plan that will equip citizens with greater understanding and appreciation of local biodiversity.

2019: The group will take the ecological inventory to cities, counties, and other organizations to explain how to use it and encourage them to incorporate goals of preserving and enhancing biodiversity into their planning and decision-making.



“There is incredible collaborative energy from many sectors moving the regional vision, atlas and action plan that is BiomeSTL forward.”

Louise Bradshaw,
Director of Education Saint Louis Zoo



“Partnering on OneSTL has given us the opportunity to broaden the reach of our own BiodiverseCity effort.”

Sheila Voss,
Vice President of Education, Missouri Botanical Garden



BiomeSTL

Biodiversity of metropolitan St. Louis

A project of: **biodiverseCity**
st. louis

ENERGY AND EMISSIONS

Why It Matters

Addressing climate change is one of the most important challenges of our generation. To avoid the environmental and economic calamities predicted, we need to greatly reduce the amount of carbon and other greenhouse gases emitted into the atmosphere.

Target

Reduce greenhouse gas emissions by 28 percent by 2025 and 80 percent by 2050 from a 2005 baseline.

Working Group Activities

2018: The group embarked on a study of local data to create a regional greenhouse gas inventory in cooperation with the Sustainability Exchange at Washington University.

2019: The group will finalize the greenhouse gas inventory and, based on that study, strategize projects that will have the greatest impact on reducing carbon levels within the St. Louis region via energy efficiency, renewable energy, and transportation.



“Washington University is proud to be able to bring our sustainability experience and knowledge into the St. Louis community.”

Phil Valko,
Assistant Vice Chancellor for Sustainability,
Washington University in St. Louis



“One of the many benefits of OneSTL is educating people on the rewards of energy efficiency including reduced greenhouse gas emissions and an excellent financial return.”

Doug Sitton,
Founder and President,
Sitton Energy Solutions



Solar panels at Nestle Purina, courtesy of Pivot Energy

FOOD ACCESS

Why It Matters

Our current food system is not equitably feeding our people, supporting our communities, or ensuring the protection of our soil and water resources. In the city of St. Louis, 57 percent of residents live in communities that have low household incomes and live more than 1/2 mile from the nearest grocery store.

Target

By 2027, reduce by half the number of healthy food priority areas* from a 2018 baseline.

** Census tracts where residents are low-income, lack vehicle access, are 1/2 mile or more from a healthy food outlet, and availability of healthy food is low.*

Working Group Activities

2018: The group created a Food Equity Advisory Board and engaged with community organizations to determine the best ways to address food access for neighborhoods including:

- Spread awareness of the Double Up Food Bucks program and the small alternative retailers utilizing the program.
- Encourage local growers to donate produce to local food pantries
- Offer classes to teach community members meal planning and how to cook fresh produce Inform community members where and how they can access the Metro Market.

2019: In addition to continuing their current activities, the group will conduct a pilot food access study in a key geographic area to explore all facets of food access including physical access, affordability, quality, and consumer behavior.



“Healthy food is a necessity for life, but not everyone has true access to it. We need to fix that.”

Leslie Bertsch,
Field Specialist, University of Missouri Extension



Link, Market, courtesy of Bi-State Development

MATERIALS AND RECYCLING

Why It Matters

The average American generates about 1,800 pounds of trash per year. That trash doesn't just end up in landfills, it contributes to the pollution of our streets, rivers, and air. While we must collectively work on reducing the amount of waste our region generates, the majority of unwanted waste can be converted to economic opportunities through reuse and recycling. This Working Group taps into how the region can reduce the amount of waste we generate, reuse as much as possible, and recycle the right items correctly.

Target

Reduce tonnage of waste going to landfills within our watershed by 30 percent by 2030 from a 2015 baseline.

Working Group Activities

2018: The Materials and Recycling Working Group was awarded a grant from the Saint Louis-Jefferson Solid Waste Management District to create a public education campaign to "Recycle Responsibly." Recycle Responsibly concentrates on the message of keeping plastic bags out of the recycle bin at home and on the six things that do belong in the bin. An America Recycles Day event held in Forest Park kicked off the campaign, where visitors could walk along the World's Fair Pavilion and see the amount of plastic bags used each second in the United States. Billboards, press releases, social media engagement, and educational materials were created through the campaign. Learn more here: www.recycleresponsibly.org.

2019: The Recycle Responsibly campaign will continue to expand its efforts on educating the public on what to recycle at home. This will extend into the reduce message, concentrating on how to reduce the necessity of single-use plastics. Bag Free Day is April 13th 2019, where grocery stores and shopping districts will have volunteers passing out reusable bags to reduce the use of plastic bags.



"OneSTL has given us the opportunity to work with other cities and counties in the region to keep recycling alive."

Jennifer Wendt,
Project Manager, Dept. of Public Works, City of University City



Recycle Responsibly Campaign Billboard, courtesy of Brightside St. Louis

TRANSIT ORIENTED DEVELOPMENT

Why It Matters

Transit Oriented Development (TOD) is a neighborhood where you can live, shop and work within walking distance of a transit stop. By creating more TOD we increase the success of our transit system, access to life's necessities for people who depend on transit and economic development.

Target

By 2023, increase the number of completed projects scoring Gold on the St. Louis Region TOD Project Scorecard by 8, the number of completed projects scoring Bronze or higher by 15, and the number of approved projects scoring Bronze or higher by 20.

Working Group Activities

2018: Developments near transit can have a much bigger positive impact on sustainability, ridership, and equitable access to opportunity if they are designed based on TOD best practices, adjusted for the local context. Over the last year, the Working Group poured over the existing plans and studies and created a scorecard to evaluate proposed developments on their merits as a good TOD.

2019: The group will be approaching city and county government agencies, private developers, and other parties to gain support for using the TOD scorecard.



“Transit is indispensable in promoting equity in access to jobs, education, health care, and other resources.”

Lisa Cagle,
Strategic Projects and Research Manager,
Bi-State Development



Emerson Park MetroLink Station development

WATER AND GREEN INFRASTRUCTURE

Why It Matters

Healthy watersheds improve the quality of water in our lakes, creeks, and rivers thus improving our health, wildlife habitat as well as recreational and economic opportunities.

Target

100 percent of land in the St. Louis region has active organizations and quality watershed plans in progress by 2025 and plans completed by 2030.

Working Group Activities

2018: The group met for the first time in April. They decided to form three sub-groups to help achieve the target: 1) Data and Evaluation, 2) Outreach and Education, 3) Special Projects. The group completed an inventory of plans and organizations in the region. Approximately 50 percent of the St. Louis area has a watershed plan. Another 24 percent has an active group associated with a watershed.

2019: The group will evaluate the status of the plans that are complete and will assist groups in need of creating or updating a plan for their watershed.



“The St. Louis region is rich in water. We aim to manage it well, for greener landscapes and cleaner rivers

Janet Buchanan,
Project Manager,
Heartlands Conservancy



Arlington Wetlands in Pontoon Beach, courtesy of Heartlands Conservancy

OneSTL Network Member Organizations

Above the Clouds Tree Care	Forest ReLeaf of Missouri	Public Water Supply District #2 of St. Charles County
Accelerate Wind	Gateway Greening	Real Estate Solutions
Access Engineering, LLC	Good Steward Energy	Renew Missouri
Ahmadiyya Muslim Community	Grace Hill Settlement House	RideFinders
Ameren Missouri Pure Power	Gray Design Group	Rise
American Heart Association	Great Rivers Greenway	River des Peres Watershed Coalition
American Lung Association	Green Dining Alliance	Saint Louis FORWARD
Anderson Associates	Green Spiral Tours	Saint Louis University
Applied Research Collaborative	Harris-Stowe State University Center for Neighborhood Affairs	Sierra Club
Backstrom McCarley Berry & Co., LLC	HeartLands Conservancy	Sitton Energy Solutions
Better Family Life, Inc.	Hellmuth + Bicknese Architects, LLC	Southern Illinois University—Edwardsville
BJC School Outreach	Home Builders Association of St. Louis and Eastern Missouri	Southwestern Illinois College
Bi-State Development	Housing Options Provided for the Elderly	Spinnaker St. Louis
Brightside St. Louis	Institute for Urban Research - SIUE	St. Charles Community College*
CBB Transportation Engineers and Planners	International Institute of St. Louis	St. Clair County Department of Health*
CDBG Operations Corporation	ioby	St. Clair County Transit District
CDM Smith	Jennings High School	St. Louis Association of Community Organizations (SLACO)
Center for Sustainability at Saint Louis University	Jones Lang Lasalle	St. Louis Chapter, NECA
Charitable Foundation USA	Justine Petersen Housing and Reinvestment Corporation	St. Louis Clean Cities
CI Select	Kaleidoscope Network	St. Louis County Department of Health*
Citizens for Modern Transit	LCMS Foundation	St. Louis Community Foundation
City Energy Project	Lilian Circle Neighborhood Development Association	St. Louis Council of Construction Consumers
City Farm	Logue & Associates, Inc.	St. Louis County
City of Belleville	Ludus Inc.	St. Louis County Soil & Water Conservation District
City of Festus	Madison County Employment and Training	St. Louis Economic Development Partnership
City of Granite City	McCartney Wealth Management	St. Louis Earth Day
City of Jennings	Maternal, Child & Family Health Coalition	St. Louis Mental Health Board
City of Maryland Heights*	Metro East Community Air Project, University of Illinois	St. Louis Regional Chamber
City of Richmond Heights*	Metro East Park and Recreation District	StL Black Leadership Roundtable
City of St. Louis Department of Health	Metro Water Infrastructure Partnership (MWIP)	St. Louis Lambert International Airport*
City of St. Louis Office of the Mayor	Metropolitan St. Louis Equal Housing and Opportunity Council	Stone Carlie & Company, LLC
City of University City*	Metropolitan St. Louis Sewer District	Sugar Creek Gardens
Community Builders Network of Metro St. Louis	Midland States Bank	The Living City Corporation
Community Development Administration	Mid America Teen Community Response Team	Tetraheed, LLC
Compass Strategic Business Consulting	Mid America Transplant	Thomson Printing
CWE Farm	Missouri American Water	Trailnet, Inc.
Davey Resource Group	Missouri Botanical Garden	Trivers Associates
Deer Creek Watershed Alliance	Missouri Commission on Human Rights	United Way of Greater St. Louis
EarthDance Farms	Missouri Department of Conservation	U.S. Department of Housing and Urban Development*
East Side Aligned	Missouri Department of Natural Resources	U.S. Green Building Council - Missouri Gateway Chapter
East-West Gateway Council of Governments	Missouri Department of Transportation	University of Missouri Extension, St. Louis County
EDC of St. Charles County	Missouri Interfaith Power & Light	University of Missouri, Environmental Assistance Center
Edwardsville Township	Missour Historical Society	Urban Forestry Consortium
Energy Resources Group	MRC Recycling	Urban Strategies
Energy Systems Group	Nspiregreen, LLC	Urban Waters Federal Partnership*
Fair Food Network	Next City-GW Properties	Washington University
Filltrexx	Planning and Community Design Commission, City of Olivette	Webster University
FOCUS St. Louis	Pollution Prevention Regional Information Center (P2RIC)	Youth Education and Health in Soular
For the Sake of All	Positive and Productive Innovations	YouthBridge Community Foundation

* Denotes public agency liaison

Get Involved

Whether you have passion for sustainability in general or are interested in a specific topic, there are several opportunities to get involved with OneSTL. You can follow the link provided next to the opportunity or simply send us a message stating your interest at: www.onestl.org/contact-us .

Join the OneSTL Network with no commitment to receive updates on our events and progress: www.onestl.org/component/kiosk/message-join .

Request information on a Working Group: www.onestl.org/contact-us .

If you would like to assist with our communications effort or help organizing the Sustainability Lab @ T-Rex, send a message at www.onestl.org/contact-us .

Show Your Support

If you have a particular interest in one or more of the Targets described in this report, show your support by signing on to our endorsement statement at www.onestltargets.org . Whether you are a student, a corporate executive, a community activist or just a concerned resident, we want to know that you care.

OneSTL

1 Memorial Drive, Suite 1600
St. Louis, MO 63102
www.onestl.org

East-West Gateway Council of Governments fully complies with Title VI of the Civil Rights Act of 1964 and related statutes and regulations in all programs and activities. For more information, or to obtain a Title VI Complaint Form, see <http://www.ewgateway.org/TitleVI/titlevi.htm> or call (314) 421-4220 or (618) 274-2750.



Printed on recycled paper

OneSTL Performance Indicators

2019 Report to the Region

See more on the indicators at onestl.org/indicators

Color	Current Trend Type
	Current Trend is in-line with the Desired Trend
	No Change from baseline to year or no statistically significant change
	Current Trend is the opposite of the Desired Trend

Collaborative		Baseline		Current	
OneSTL Network Membership	Number of OneSTL Network Members	2013	0	2018	336
Sustainability Lab @ T-Rex	Average number of monthly attendees	2017	44	2018	50
Stronger Neighborhoods	Percent of residents living within the service area of a Community Development Corporation	2011	34%	-	
Access to Information	Number of OneSTL.org users in the St. Louis Metro Area	2014	2,208	2018	6,743
Prosperous		Baseline		Current	
Economic Resiliency	Diversity of employment by sector (1= high resiliency and 0= low resiliency)	2010	0.888	2016	0.930
Access to Jobs	Percent of residents living within a reasonable travel time to work	2006-2010	88.0%	2013-2017	87.0%
Poverty	Percent of residents living in poverty	2010	12.9%	2017	11.5%
Quality Jobs	Percent of jobs with a median wage higher than self-sufficiency wage	2010	34.8%	2017	38.8%
Employment	Number of full-time equivalent (FTE) jobs	2010	1,117,934	2017	1,160,460
Unemployment	Unemployment Rate	2010	9.5%	2017	3.7%
Income	Personal income per capita (2017 dollars)	2010	\$46,906	2017	\$52,398
Gross Metropolitan Product (GMP)	The market value of goods and services produced in the region (2009 chained dollars)	2010	\$134.1 billion	2017	\$139.5 billion
Racial Disparity	Ratio of white median household income to black median household income	2010	1.88	2017	2.07
Distinctive		Baseline		Current	
H+T Affordability	Proportion of household income spent on housing and transportation costs	2010	48.1%	2017	45.1%
Access to Open Space	Percent of population that reside within 1 mile of a park or public open space for rural areas or ½ mile for urban areas	2007-2011	74.5%	-	
Crime	Crime Rate - combined violent and property crime rates per 100,000 population	2010	3,657	2015	3,019
Healthy and Active	Percent of adults meeting recommended exercise standard	2011	49.5%	2017	49.4%
Inclusive		Baseline		Current	
Stably Integrated Communities	Residents who live in stably integrated communities	Method Under Development			
Housing Choice	Availability of housing at a variety of price points	Method Under Development			
Concentrated Poverty	Percent of poor residents living in census tracts with >40% poverty rate	2006-2010	13.8%	2013-2017	10.9%
Income Inequality	Gini Index	2010	0.454	2017	0.463
Housing Affordability	Percent of low-income households paying 30 percent or more of income on housing.	2006-2010	65.4%	2012-2016	65.4%
Prepared		Baseline		Current	
Floodplain Management	Number of local governments participating in the Community Rating System by the NFIP	2010	1	2018	7
Heat/Cold Mortality	Number of heat- and cold-related deaths	2008-2012	24	2013-2017	22.2
Hazard Mitigation	Percent of local governments participating in a current local hazard mitigation plan	2010	84.3%	2018	54.2%
Development in Potentially Hazardous Areas	Percent of development in 500-year flood zone, potential landslide areas, and potential earthquake liquefaction areas	2006	15.5%	2011	16.1%
Addressing Climate Change	Percent of local governments that have taken action to address climate change	2010	8.8%	2017	11.8%
StormReady	Percent of local governments that are certified StormReady by the National Weather Service	2010	2.5%	2018	5.9%

OneSTL Performance Indicators

2019 Report to the Region

See more on the indicators at onestl.org/indicators

Color	Current Trend Type
	Current Trend is in-line with the Desired Trend
	No Change from baseline to year or no statistically significant change
	Current Trend is the opposite of the Desired Trend

Connected		Baseline		Current	
Transportation Choice	Total percent of workers commuting via walking, biking, transit, rideshare, or who work from home.	2010	16.2%	2017	16.2%
Residential Transit Access	Percent of households within 1/4 mile of a transit stop	2010	44.0%	2013-2017	43.0%
Employment Transit Access	Percent of jobs within 1/4 mile of a transit stop	2011	69.2%	2018	67.8%
Transit Oriented Development (TOD)	Measure of relationship between change in density and change in ridership at MetroLink stations	Method Under Development			
VMT per Capita	Vehicle miles traveled per capita per day	2010	25.6	2017	27.1
Bikeability	Number of miles of on-road bike facilities and shared-use paths	2013	654 miles	2018	931
Complete Streets	Percent of local governments with complete streets policies	2010	3.4%	2018	10.8%
Transit Ridership	Annual transit boardings system-wide (MetroLink/Bus System/Call-A-Ride)	2010	43 million	2017	43.3 million
Green		Baseline		Current	
Developed Land per Capita	Number of developed acres per capita	2006	0.257 acres	2011	0.261 acres
Air Quality	Average number of days per year the EPA Air Quality Index exceeds 100 for ozone	2009-2011	30.3 days	2016-2018	14.0 days
Rainscaping	Acres of land treated for stormwater overflow using water quality best management practices	2010	578 acres	2018	8,244 acres
Tree Cities	Percent of municipalities that are certified by Tree City USA	2010	20.4%	2017	27.0%
Tree Canopy	Percent of land with tree canopy cover	2010/2012	39.0%	-	-
Watershed Plans	Number of watersheds with a plan or active organization	2010	8	2018	30
Water Quality	Rivers and streams impaired (polluted), in miles	2012	709.5	2015	711.9
Sustainable Codes	Percent of local governments that have energy conservation and/or a green construction codes	2013	86.8%	2018	87.2%
Greenhouse Gas Emissions	Total carbon dioxide equivalent emissions per capita	2008/2010	23.58 MTCO ₂ e	-	-
Efficient		Baseline		Current	
Access to Healthy Food Choices	Percent of total population that live in a low income census tract and reside far from a supermarket/large grocery store (more than one mile for urban areas or 10 miles for rural areas)	2010	6.0%	2015	6.1%
Energy Use	Total residential gas and electric energy use in BTUs per customer	2010	111.4 million BTUs	2011	106.6 million BTUs
Energy Diversity	Percent of electricity supplied by renewable sources	2010	3.2%	2017	6.7%
Waste Diversion Rate	Percent of waste diverted through source reduction, recycling, reuse, or composting	2010	53.7%	2016	56.2%
Government Resiliency	General local government debt to revenue ratio for counties	2007	1	2012	1.1
Building Energy Efficiency	Square footage of 3rd party verified green commercial and institutional buildings and sites (LEED, ENERGY STAR, and SITES)	2013	32.3 million sq. ft.	2017	45.3 million sq. ft.
Educated		Baseline		Current	
Volunteer Rate	Percent of residents who volunteer	2010	32.1%	2015	25.4%
Cultural/Arts Institutions	Cultural/arts nonprofit revenue per capita in constant dollars	2010	\$105.90	2012	\$114.69
Voter Participation	Voter turnout among registered voters in the presidential election	2008	69.5%	2016	67.5%
School Quality	Percent of third grade public school students who meet reading proficiency standards	2016	55.6%	2017	57.2%
High School Graduation	Percent of public high school students who graduate within four years	2010-2011	79.5%	2016-2017	86.9%
College Attainment	Percent of adults age 25 and over with a bachelor's or graduate degree	2010	29.9%	2017	34.6%



EAST-WEST GATEWAY
Council of Governments

Creating Solutions Across Jurisdictional Boundaries

Chair

Mark A. Kern
Chairman, St. Clair County Board

Vice Chair

Steve Ehlmann
County Executive
St. Charles County

2nd Vice Chair

Robert Elmore
Chairman, Board of Commissioners
Monroe County

Executive Committee

Tim Brinker
Presiding Commissioner
Franklin County

Dennis Gannon
County Executive
Jefferson County

Lyda Krewson
Mayor, City of St. Louis

Kurt Prenzler
Chairman, Madison County Board

Steve Stenger
County Executive
St. Louis County

Members

Ron Counts
Mayor, City of Arnold
Franklin County

Emeka Jackson-Hicks
Mayor, City of East St. Louis

Reggie Jones
St. Louis County

Mark Kupsy
Vice President,
Southwestern Illinois
Council of Mayors

Norman C. McCourt
Municipal League of Metro St. Louis

Roy Mosley
St. Clair County

Lewis Reed
President, Board of Aldermen
City of St. Louis

Herbert Simmons
President, Southwestern Illinois
Metropolitan & Regional
Planning Commission

Tom Smith
President, Southwestern Illinois
Council of Mayors

Michael Walters
Madison County

John White
St. Charles County

Regional Citizens

Barbara Geisman
C. William Grogan

Richard Kellett
John A. Laker

Non-voting Members

Erin Aleman
Illinois Department of
Transportation

Erika Kennett
Illinois Department of Commerce
and Economic Opportunity

Patrick McKenna
Missouri Department of
Transportation

Taulby Roach
Bi-State Development

Aaron Willard
Missouri Office of Administration

Executive Director

James M. Wild

Memo to: Board of Directors
From: Staff
Subject: 2019 Regional Safety Performance Targets and Transit Asset Management Targets
Date: February 12, 2019

As established under MAP-21 and continued in the FAST Act, state departments of transportation (DOTs) and metropolitan planning organizations (MPOs) are given separate responsibility for establishing performance targets and using a set of performance measures to track progress toward meeting those targets for a variety of transportation areas, including safety, bridge and pavement condition, air quality, freight movement, system reliability and transit asset management.

Safety Performance Measures

The safety performance measure (Safety PM) requirements are set out in the Federal Highway Administration's (FHWA) *National Performance Management Measures: Highway Safety Improvement Program* final rule.

To fulfill the requirements of the Safety PM, East-West Gateway Board of Directors must set 2019 safety targets by February 2019. MPOs have the option to set specific regional targets or support the statewide targets.

Staff recommends that the Board establish the following safety targets for the East-West Gateway (EWG) planning area:

2019 Safety Target Annual Reduction Values	
Fatality Reduction	2%
Serious Injury Reduction	2%
Reduction in Bike/Pedestrian Fatalities and Serious Injuries Combined	2%

Gateway Tower
One Memorial Drive, Suite 1600
St. Louis, MO 63102-2451

314-421-4220
618-274-2750
Fax 314-231-6120

webmaster@ewgateway.org
www.ewgateway.org

Board of Directors
February 12, 2019
Page 2

2019 Safety Performance Targets	
Fatalities	289.6
Fatality Rate (per 100 million VMT)	0.98
Serious Injuries	1721.9
Serious Injury Rate (per 100 million VMT)	5.83
Number of Bike/Pedestrian Fatalities and Serious Injuries Combined	205.7

The following section provides background and analysis on the safety PM rule.

Background

The Fixing America's Surface Transportation (FAST) Act was signed into law on December 4, 2015. It continues the National Highway Performance Program (NHPP) established under the Moving Ahead for Progress in the 21st Century Act (MAP-21) intended to establish a performance-driven, outcome-based planning and programming process. A crucial element of this process is the establishment of performance targets and measures to achieve desired outcomes throughout the transportation system.

These performance targets ensure states and MPOs invest resources in transportation projects that make progress toward the achievement of national goals.

The Safety PM requires state DOTs and MPOs to establish safety targets as five-year rolling averages on all public roads for:

- (1) the number of fatalities;
- (2) the rate of fatalities per 100 million vehicle miles traveled (VMT);
- (3) the number of serious injuries;
- (4) the rate of serious injuries per 100 million VMT; and
- (5) the number of non-motorized fatalities and non-motorized serious injuries.

Therefore, the 2019 target is the desired value of the 2015-2019 average for each of the measures. Injuries and fatalities from traffic crashes vary considerably from year to year due to numerous factors, and the five-year average is intended to smooth large changes.

Board of Directors
February 12, 2019
Page 3

State DOTs and MPOs must adopt annual targets for each safety measure, with state DOTs required to establish quantitative targets. The actual target should be set to what the state believes it can achieve; the rule does not specify or provide guidance for how ambitious the targets should be. Each year FHWA is to evaluate whether states have met or made significant progress toward meeting their safety targets. FHWA will consider states to be in compliance if they have met or improved from the baseline at least four of the five required performance targets. In each year that FHWA determines a State has not met or made significant progress toward meeting its performance targets, the State will be required to use obligation authority equal to the baseline year Highway Safety Improvement Program apportionment only for safety projects.

By contrast, MPOs can either choose to set quantitative regional targets or commit to help implement the state's target by planning for and programming safety projects. MPOs are required to update safety targets each year in a report to the state DOTs. East-West Gateway will also need to integrate the Safety PM into its planning processes by including it in the metropolitan transportation plan, *Connected2045*. In addition, East-West Gateway is required to show how investments in the transportation improvement program (TIP) help achieve the Safety PM targets.

During the development of regional safety targets, staff analyzed state targets set by both IDOT and MoDOT and compared those to statewide and regional trends in both traffic safety and transportation funding for safety projects. Given the current trends and levels of proposed funding, MoDOT's assumptions (9% fatality reduction, 5% serious injury reduction, and a 4% non-motorized reduction) were considered unrealistic to achieve in the period of one year. Therefore staff recommends utilizing IDOT's assumptions (2% reductions in fatalities, serious injuries, and non-motorized fatalities and serious injuries) for setting targets for the region as a whole. As noted above, this target can be reset by East-West Gateway every year to reflect the most current trends in the data as well as funding availability.

Following discussion and approval by the East-West Gateway Board of Directors, staff will inform IDOT and MoDOT that the East-West Gateway has established regional safety targets.

Transit Asset Management (TAM) Performance Measures

The TAM performance measure requirements are set forth in the Federal Transit Administration's Final Rule for Transit Asset Management.

Board of Directors
February 12, 2019
Page 4

To fulfill the requirements of the TAM rule, the Board must set 2019 TAM targets by March 2019.

Staff recommends that the Board establish the following TAM targets for the EWG Planning area:

IDOT Targets

2019 IDOT TAM Facilities Targets			
Facility Type	Facilities Rated Below 3.0	Total Facilities	% Rated Below 3.0
Admin/Maintenance	15	87	17%
Passenger/Parking	4	35	11%
Total	19	122	16%

2019 IDOT TAM Rolling Stock Targets (Revenue Vehicles)			
Vehicle Type	# of Vehicles At/Beyond ULB	Total Vehicles	% Vehicles At/Beyond ULB
Articulated bus	12	16	75%
Automobile	8	8	100%
Bus	160	526	30%
Ferryboat	3	3	100%
Minibus	82	171	48%
Minivan	163	243	67%
Other rubber tire vehicles	8	8	100%
Van	447	852	52%
Total	883	1,827	48%

Board of Directors
February 12, 2019
Page 5

2019 IDOT TAM Equipment Targets (Service Vehicles)			
Vehicle Type	# of Vehicles At/Beyond ULB	Total Vehicles	% Vehicles At/Beyond ULB
Automobile	52	112	46%
Minivan	28	50	56%
Other rubber tire vehicles	6	6	100%
Van	0	4	0%
Total	86	172	50%

MoDOT Targets

2019 MoDOT TAM Facilities Targets			
Facility Type	# of Units	% Rated Below 3.0	Targets
Administration	19	0%	30%
Maintenance	10	0%	25%
Passenger	1	0%	30%

2019 MoDOT TAM Rolling Stock Targets (Revenue Vehicles)			
Vehicle Type	# of Units	% Vehicles Exceeding ULB	Targets
Automobiles	29	2%	45%
Buses	35	30%	45%
Cutaways	641	15%	45%
Minivans	321	33%	45%
Vans	224	51%	45%

Board of Directors
February 12, 2019
Page 6

Metro Targets

2019 Metro TAM Facilities Targets		
Facility Type	Target FY2019 Term Score	FY2018 TERM Score
Radio Towers	3.6	3.6
Ewing Rail Maintenance Facility	3.5	3.82
29th Street Rail Maintenance Facility	3.75	3.9
Central Bus Maintenance Facility	3.8	3.29
Brentwood Bus Maintenance Facility	3.75	3.49
Illinois Bus Maintenance Facility	3.3	3.14
DeBaliviere Bus Maintenance Facility	3.2	2.87
DeBaliviere Power House	2.93	2.93
Swansea Maintenance Facility	3	3.06
Sarah Yard	3	2
Parking Facilities	4	3.83
Rail Passenger Facilities	3.97	3.77
Passenger Transit Centers	3.91	3.84
Elevators/Escalator*		

*Evaluation and TERM Score will be available in the FY 2019 TAM Plan

2019 Metro TAM Rolling Stock Targets (Revenue Vehicles)		
Vehicle Type	Target FY2019 in Years	% Vehicles At/Beyond ULB
Bus	14	16%
Van	8	42%
Light Rail	31	0%

Board of Directors
February 12, 2019
Page 7

2019 Metro Tam Equipment Targets (Service Vehicles)		
Vehicle Type	ULB FY2018 in Years	% Vehicles At/Beyond ULB
Over 1 Ton	14	40%
Under 1 Ton	8	56%
Trailers	14	45%
Off-Road Equipment	14	40%
Forklift	14	50%
TUG/Mule Vehicles	14	83%
Snow Remove Equipment	14	6%

2019 Metro TAM Infrastructure Targets by Department		
Department	Target FY2019 Term Score	FY2018 TERM Score
LRT Communication	2.39	2.31
RF Communication Facilities	4.2	3.9
VMD Communication Maintenance Systems	4	3.4
Traction Power	3.84	3.53
Signal	4.52	3.49
Track	3	3.49

2019 Metro TAM Infrastructure Targets by Structure		
Structure	Target FY2019 Term Score	FY2018 TERM Score
Bridges - Deck	6	7
Bridges - Superstructure	6	6.7
Bridges - Substructure	6	6.8
Bridges - Channel/Banks	6	6.7
Tunnels	6	5.6
Ancillary Structures - Bridges	6	6.4
Ancillary Structures - Pedestrian Tunnels	6	8
Ancillary Structures - Culverts	6	6.9
Ancillary Structures - Retaining Walls	6	6.6

Board of Directors
February 12, 2019
Page 8

Background

The TAM performance measures require public transportation providers, State DOTs and MPOs to establish TAM targets for:

- 1.) Rolling Stock: The percentage of revenue vehicles that exceed the useful life benchmark (ULB).
- 2.) Equipment: The percentage of non-revenue service vehicles that exceed the ULB.
- 3.) Facilities: The percentage of facilities that are rated less than 3.0 on the Transit Economic Requirements Model (TERM) Scale.
- 4.) Infrastructure: The percentage of track segments that have performance restrictions. Track segments are measured to the nearest 0.01 of a mile.

Public transportation providers that own FTA-funded capital assets used in providing public transportation services are required to develop or participate in a TAM Plan to maintain asset inventory, assess inventory conditions, and prioritize investments to improve the state of good repair of their capital assets.

Direct recipients of FTA funds that pass through some or all of those funds to subrecipients that own or operate capital assets used in providing public transportation must sponsor a group TAM plan on behalf of those subrecipients. Therefore, IDOT and MoDOT must establish a group TAM plan for subrecipients of FTA funds. State DOTs and public transportation providers must set targets annually for the performance of assets. MPOs are not required to update their targets annually, but are encouraged to consult with State DOTs and transit providers to ensure alignment of targets.

More details about each agency's FY 2019 TAM targets can be found in the attached TAM Plans.

Staff Recommendation: Staff recommends approval of 2019 regional safety performance targets and 2019 transit asset management targets.



EAST-WEST GATEWAY
Council of Governments

Creating Solutions Across Jurisdictional Boundaries

Memo to: Board of Directors
From: Staff
Subject: Modifications to the FY 2019-2022 Transportation Improvement Program (TIP), *Connected2045*, and the Related Air Quality Conformity Determination – Requested by Illinois and Missouri sponsors
Date: February 12, 2019

The Illinois Department of Transportation (IDOT), Missouri Department of Transportation (MoDOT), City of St. Louis, and St. Louis County have requested to amend the FY 2019-2022 TIP, *Connected2045*, and related Air Quality Conformity Determination. In all, they are requesting to add 12 new projects and modify seven existing projects.

Illinois Modified Projects

IDOT has requested to modify three existing projects in the TIP. To fund these projects, IDOT will utilize cost savings from other projects already completed during the current fiscal year.

These projects are summarized below:

Modified Projects - Illinois				
Sponsor / TIP # / County	Project Title - Limits	Description of Work	Current Cost / Revised Cost	Reason for Change
IDOT / 6650G-19 / Madison	IL 3 – 20 th Street to Niedringhaus Avenue	ADA improvements & traffic signal replacement	\$300,000 / \$555,000	Cost increase greater than 15% due to required additional work to bring sidewalks into ADA compliance.
IDOT / 6804Y-18 / Madison	IL 160 – Highland Road to Clinton County line	Resurfacing	\$3,000,000 / \$3,600,000	Cost increase greater than 15% due to revised engineer's estimate.

Chair
Mark A. Kern
Chairman, St. Clair County Board

Vice Chair
Steve Ehlmann
County Executive
St. Charles County

2nd Vice Chair
Robert Elmore
Chairman, Board of Commissioners
Monroe County

Executive Committee
Tim Brinker
Presiding Commissioner
Franklin County
Dennis Gannon
County Executive
Jefferson County
Lyda Krewson
Mayor, City of St. Louis
Kurt Prenzler
Chairman, Madison County Board
Steve Stenger
County Executive
St. Louis County

Members
Ron Counts
Mayor, City of Arnold
Franklin County
Emeka Jackson-Hicks
Mayor, City of East St. Louis
Reggie Jones
St. Louis County
Mark Kupsky
Vice President,
Southwestern Illinois
Council of Mayors
Norman C. McCourt
Municipal League of Metro St. Louis
Roy Mosley
St. Clair County
Lewis Reed
President, Board of Aldermen
City of St. Louis
Herbert Simmons
President, Southwestern Illinois
Metropolitan & Regional
Planning Commission
Tom Smith
President, Southwestern Illinois
Council of Mayors
Michael Walters
Madison County
John White
St. Charles County
Regional Citizens
Barbara Geisman
C. William Grogan
Richard Kellett
John A. Laker

Non-voting Members
Erin Aleman
Illinois Department of
Transportation
Erika Kennett
Illinois Department of Commerce
and Economic Opportunity
Patrick McKenna
Missouri Department of
Transportation
Taulby Roach
Bi-State Development
Aaron Willard
Missouri Office of Administration

Executive Director
James M. Wild

Gateway Tower
One Memorial Drive, Suite 1600
St. Louis, MO 63102-2451
314-421-4220
618-274-2750
Fax 314-231-6120
webmaster@ewgateway.org
www.ewgateway.org

Modified Projects - Illinois				
Sponsor / TIP # / County	Project Title - Limits	Description of Work	Current Cost / Revised Cost	Reason for Change
IDOT / 6886E-20 / Madison	I-55/70/US 40 – 0.5 miles west of Black Lane to 0.4 miles east of IL 159	Microsurfacing 2 Pass	\$4,000,000 / \$4,000,000	Advance from FY 2020 to FY 2019

Missouri New Projects

St. Louis County has requested to add four new off-system bridge (BRO) projects. The City of St Louis has requested to add one BRO project. BRO funds are allocated to a county based on the square footage of deficient bridges and are used to replace or rehabilitate deficient bridges. MoDOT has requested to add seven new projects. MoDOT intends to use advance construction¹ for TIP# 6788J-18 meaning that the project initially will be funded with 100 percent state funds from MoDOT’s operations budget until federal funds become available. To fund the remaining projects, MoDOT will utilize cost savings of other projects already completed during the current fiscal year.

These projects are summarized below:

New Projects - Missouri					
Sponsor / TIP #	Title – Limits	Description of Work	County	Federal Cost	Total Cost
St. Louis County / 5204D-19	Hudson Drive Bridge – Over Black Jack Creek	Bridge rehabilitation	St. Louis	\$526,480	\$658,100
St. Louis County / 5204E-19	New Ballwin Road Bridge – Over Kiefer Creek	Bridge replacement	St. Louis	\$1,112,240	\$1,390,300
St. Louis County / 5204F-19	Vorhof Drive Bridge – Over Black Jack Creek	Bridge rehabilitation	St. Louis	\$509,840	\$637,300

¹ Advance construction is a mechanism that enables a sponsor to start construction using non-federal funds, with the understanding that it may later convert the project to federal-aid funding and receive federal reimbursement. To be eligible for conversion, the project must qualify for federal funds.

New Projects - Missouri					
Sponsor / TIP #	Title – Limits	Description of Work	County	Federal Cost	Total Cost
St. Louis County / 5204G-19	Wyncrest Drive Bridge – Over branch of Grand Glaize Creek	Bridge replacement	St. Louis	\$1,309,600	\$1,637,000
St. Louis / 5205E-19	Hamilton Avenue Bridge – Over MetroLink	Bridge replacement	St. Louis City	\$1,920,000	\$2,400,000
MoDOT / 6788J-18	MO E – At Joachim Creek	Erosion control	Jefferson	\$0	\$909,000
MoDOT / 6892Y-19	MO ZZ – MO C to MO Y	Resurfacing, guardrail upgrades, and replace culvert pipes	Franklin	\$1,422,400	\$1,778,000
MoDOT / 6892Z-19	MO 21 – At Lowery Lane in Hillsboro	Add turn lanes	Jefferson	\$447,200	\$559,000
MoDOT / 6936A-19	OR 55 – Elm Drive to Imperial Main Street	Resurfacing, guardrail, ADA transition plan	Jefferson	\$982,400	\$1,228,000
MoDOT / 6936B-19	MO 94, MO K, & MO Z – Bridges A6476, A7372, A5064, A5065, A5116, A 5123	Bridge rehabilitation, substructure repair, and pile encasing	St. Charles	\$532,000	\$665,000
MoDOT / 6936C-19	MO D – I-270 to Broadway	Pavement marking	Multi-County-Missouri	\$647,200	\$809,000
MoDOT / 6936D-19	I-70 – Stan Musial Veterans Memorial Bridge	Bridge improvements and preventive maintenance	Multi-State	\$953,100	\$1,948,000
TOTAL:				\$10,362,460	\$14,618,700

Missouri Modified Projects

MoDOT has requested to modify four existing projects in the TIP. MoDOT intends to use advance construction² for TIP# 6892L-19 meaning that the project initially will be funded with 100 percent state funds from MoDOT’s operations budget until federal funds become available.

² Advance construction is a mechanism that enables a sponsor to start construction using non-federal funds, with the understanding that it may later convert the project to federal-aid funding and receive federal reimbursement. To be eligible for conversion, the project must qualify for federal funds.

These projects are summarized below:

Modified Projects - Missouri				
Sponsor / TIP # / County	Project Title - Limits	Description of Work	Current Cost / Revised Cost	Reason for Change
MoDOT / 6807U-18 / St. Louis	I-70 – Branch Street to Springdale Avenue	Bridge rehabilitation – 16 bridges	\$2,341,000 / \$4,154,000	Cost increase greater than 15% to add six additional bridges to project scope
MoDOT / 6846-19 / 6846A-18 / St. Louis	MO 364 – At MO 141 – Dual left turn at westbound off ramp	Dual left/right turn lane on eastbound off ramp & extend merge	\$3,418,447 / \$3,978,447	Cost increase greater than 15% due to the addition of widening curb ramps and modifying signals to the project scope.
MoDOT / 6887D-19 / Jefferson	US 61 – Brandon Wallace Way to 8 th Street in Crystal City	Add two way left turn lane and resurfacing	\$1,335,000 / \$2,580,000	Cost increase greater than 15% due to expanded limits to address a safety concern.
MoDOT / 6892L-19 / 6930B-19 / Jefferson	MO 109 – MO FF and MO W near Eureka	Adding turn lanes, adding signals, & ADA transition plan	\$1,747,779 / \$2,100,779	Cost increase greater than 15% due to the addition of the construction phase on a previously programmed engineering project.

Staff Recommendation: Staff recommends that the FY 2019-2022 TIP, *Connected2045*, and related Air Quality Conformity Determination be revised to add 12 new projects and modify seven existing projects as summarized above and detailed in the attachment. These projects are exempt with respect to air quality in accordance with federal regulations (40 CFR 93.126, 93.127).

Amendment # 0219-004
TIP # 5204D-19
Sponsor # BRO-B096(4)

PROJECT SPONSOR: St. Louis County

ACTION REQUESTED: Revise FY 2019, FY 2020, & FY 2021 of the FY 2019-2022 TIP to add a project

TITLE: Hudson Drive Bridge

LIMITS: Over Black Jack Creek

DESCRIPTION: Bridge rehabilitation

COUNTY: St. Louis

FUNDING SOURCE: Off-System Bridge (BRO)

	Federal	Match	Total
PE	\$56,040	\$14,010	\$70,050
ROW	\$20,800	\$5,200	\$26,000
Implementation	\$449,640	\$112,410	\$562,050
Total	\$526,480	\$131,620	\$658,100

AIR QUALITY CONFORMITY: Exempt – Widening narrow pavements or reconstructing bridges (no additional travel lanes) (§ 93.126)

STAFF RECOMMENDATION: Approval

Board of Directors
February 12, 2019
Page 6

Amendment # 0219-005
TIP # 5204E-19
Sponsor # BRO-B096(5)

PROJECT SPONSOR: St. Louis County

ACTION REQUESTED: Revise FY 2019, FY 2020, & FY 2021 of the FY 2019-2022 TIP to add a project

TITLE: New Ballwin Road Bridge

LIMITS: Over Kiefer Creek

DESCRIPTION: Bridge replacement

COUNTY: St. Louis

FUNDING SOURCE: Off-System Bridge (BRO)

	Federal	Match	Total
PE	\$116,520	\$29,130	\$145,650
ROW	\$62,400	\$15,600	\$78,000
Implementation	\$933,320	\$233,330	\$1,166,650
Total	\$1,112,240	\$278,060	\$1,390,300

AIR QUALITY CONFORMITY: Exempt – Widening narrow pavements or reconstructing bridges (no additional travel lanes) (§ 93.126)

STAFF RECOMMENDATION: Approval

Board of Directors
February 12, 2019
Page 7

Amendment # 0219-006
TIP # 5204F-19
Sponsor # BRO-B096(6)

PROJECT SPONSOR: St. Louis County

ACTION REQUESTED: Revise FY 2019, FY 2020, & FY 2021 of the FY 2019-2022 TIP to add a project

TITLE: Vorhof Drive Bridge

LIMITS: Over Black Jack Creek

DESCRIPTION: Bridge rehabilitation

COUNTY: St. Louis

FUNDING SOURCE: Off-System Bridge (BRO)

	Federal	Match	Total
PE	\$54,120	\$13,530	\$67,650
ROW	\$20,800	\$5,200	\$26,000
Implementation	\$434,920	\$108,730	\$543,650
Total	\$509,840	\$127,460	\$637,300

AIR QUALITY CONFORMITY: Exempt – Widening narrow pavements or reconstructing bridges (no additional travel lanes) (§ 93.126)

STAFF RECOMMENDATION: Approval

Board of Directors
February 12, 2019
Page 8

Amendment # 0219-007
TIP # 5204G-19
Sponsor # BRO-B115(018)

PROJECT SPONSOR: St. Louis County

ACTION REQUESTED: Revise FY 2019, FY 2020, & FY 2021 of the FY 2019-2022 TIP to add a project

TITLE: Wyncrest Drive Bridge

LIMITS: Over branch of Grand Glaize Creek

DESCRIPTION: Bridge replacement

COUNTY: St. Louis

FUNDING SOURCE: Off-System Bridge (BRO)

	Federal	Match	Total
PE	\$138,400	\$34,600	\$173,000
ROW	\$85,600	\$21,400	\$107,000
Implementation	\$1,085,600	\$271,400	\$1,357,000
Total	\$1,309,600	\$327,400	\$1,637,000

AIR QUALITY CONFORMITY: Exempt – Widening narrow pavements or reconstructing bridges (no additional travel lanes) (§ 93.126)

STAFF RECOMMENDATION: Approval

Board of Directors
February 12, 2019
Page 9

Amendment # 0219-008
TIP # 5205E-19
Sponsor # BRO-B115(018)

PROJECT SPONSOR: City of St. Louis

ACTION REQUESTED: Revise FY 2019, FY 2020, & FY 2021 of the FY 2019-2022 TIP to add a project

TITLE: Hamilton Avenue Bridge

LIMITS: Over MetroLink

DESCRIPTION: Bridge reconstruction

COUNTY: St. Louis City

FUNDING SOURCE: Off-System Bridge (BRO)

	Federal	Match	Total
PE	\$280,000	\$70,000	\$350,000
ROW	\$40,000	\$10,000	\$50,000
Implementation	\$1,600,000	\$400,000	\$2,000,000
Total	\$1,920,000	\$480,000	\$2,400,000

AIR QUALITY CONFORMITY: Exempt – Purchase of new buses and rail cars to replace existing vehicles or for minor expansions of the fleet (§ 93.126)

STAFF RECOMMENDATION: Approval

Board of Directors
 February 12, 2019
 Page 10

Amendment # 0219-009
TIP # 6788J-19
Sponsor # 6S3090C

PROJECT SPONSOR: MoDOT

ACTION REQUESTED: Revise FY 2019, FY 2020, FY 2021, & FY 2022 of the FY 2019-2022 TIP to add a project

TITLE: MO E

LIMITS: At Joachim Creek

DESCRIPTION: Erosion Control

COUNTY: Jefferson

FUNDING SOURCE: State Advance Construction (STAC*)

	Federal	Match	Total
PE	\$0	\$150,000	\$150,000
ROW	\$0	\$35,000	\$35,000
Implementation	\$0	\$724,000	\$724,000
Total	\$0	\$909,000	\$909,000

*\$648,000 to be converted to Surface Transportation Block Grant (STBG) at a later date.

AIR QUALITY CONFORMITY: Exempt – Projects that correct, improve, or eliminate a hazardous location or feature (§ 93.126)

STAFF RECOMMENDATION: Approval

Board of Directors
 February 12, 2019
 Page 11

Amendment # 0219-010
TIP # 6892Y-19
Sponsor # 6S3420

PROJECT SPONSOR: MoDOT

ACTION REQUESTED: Revise FY 2019 & FY 2020 of the FY 2019-2022 TIP to add a project

TITLE: MO ZZ

LIMITS: MO C to MO Y

DESCRIPTION: Resurfacing, guardrail upgrades, and replace culvert pipes

COUNTY: Franklin

FUNDING SOURCE: National Highway Performance Program (NHPP)

	Federal	Match	Total
PE	\$236,000	\$59,000	\$295,000
ROW	\$0	\$0	\$0
Implementation	\$1,186,400	\$296,600	\$1,483,000
Total	\$1,422,400	\$355,600	\$1,778,000

AIR QUALITY CONFORMITY: Exempt – Pavement resurfacing and/or rehabilitation (§ 93.126)

STAFF RECOMMENDATION: Approval

Board of Directors
February 12, 2019
Page 12

Amendment # 0219-011
TIP # 6892Z-19
Sponsor # 6P3242B

PROJECT SPONSOR: MoDOT

ACTION REQUESTED: Revise FY 2019, FY 2020, & FY 2021 of the FY 2019-2022 TIP to add a project

TITLE: MO 21

LIMITS: At Lowery Lane in Hillsboro

DESCRIPTION: Add turn lanes

COUNTY: Jefferson

FUNDING SOURCE: National Highway Performance Program (NHPP)

	Federal	Match	Total
PE	\$27,200	\$6,800	\$34,000
ROW	\$0	\$0	\$0
Implementation	\$420,000	\$105,000	\$525,000
Total	\$447,200	\$111,800	\$559,000

AIR QUALITY CONFORMITY: Exempt – Intersection channelization projects (§ 93.127)

STAFF RECOMMENDATION: Approval

Board of Directors
February 12, 2019
Page 13

Amendment # 0219-012
TIP # 6936A-19
Sponsor # 6S3421

PROJECT SPONSOR: MoDOT

ACTION REQUESTED: Revise FY 2019 & FY 2020 of the FY 2019-2022 TIP to add a project

TITLE: OR 55

LIMITS: Elm Drive to Imperial Main Street

DESCRIPTION: Resurfacing, guardrail, ADA transition plan

COUNTY: Jefferson

FUNDING SOURCE: National Highway Performance Program (NHPP)

	Federal	Match	Total
PE	\$192,800	\$48,200	\$241,000
ROW	\$0	\$0	\$0
Implementation	\$789,600	\$197,400	\$987,000
Total	\$982,400	\$245,600	\$1,228,000

AIR QUALITY CONFORMITY: Exempt – Pavement resurfacing and/or rehabilitation (§ 93.126)

STAFF RECOMMENDATION: Approval

Board of Directors
February 12, 2019
Page 14

Amendment # 0219-013
TIP # 6936B-19
Sponsor # 6S3431

PROJECT SPONSOR: MoDOT

ACTION REQUESTED: Revise FY 2019 & FY 2020 of the FY 2019-2022 TIP to add a project

TITLE: MO 94, MO K, & MO Z

LIMITS: Bridges A6476, A7372, A5064, A5065, A5116, A5123

DESCRIPTION: Bridge rehabilitation, substructure repair, and pile encasing

COUNTY: St. Charles

FUNDING SOURCE: National Highway Performance Program (NHPP)

	Federal	Match	Total
PE	\$44,800	\$11,200	\$56,000
ROW	\$0	\$0	\$0
Implementation	\$487,200	\$121,800	\$609,000
Total	\$532,000	\$133,000	\$665,000

AIR QUALITY CONFORMITY: Exempt – Widening narrow pavements or reconstructing bridges (no additional travel lanes) (§ 93.126)

STAFF RECOMMENDATION: Approval

Board of Directors
February 12, 2019
Page 15

Amendment # 0219-014
TIP # 6936C-19
Sponsor # 6S3411

PROJECT SPONSOR: MoDOT

ACTION REQUESTED: Revise FY 2019 of the FY 2019-2022 TIP to add a project

TITLE: MO D

LIMITS: I-270 to Broadway

DESCRIPTION: Pavement marking

COUNTY: Multi-County-Missouri

FUNDING SOURCE: National Highway Performance Program (NHPP)

	Federal	Match	Total
PE	\$8,000	\$2,000	\$10,000
ROW	\$0	\$0	\$0
Implementation	\$639,200	\$159,800	\$799,000
Total	\$647,200	\$161,800	\$809,000

AIR QUALITY CONFORMITY: Exempt – Pavement marking (§ 93.126)

STAFF RECOMMENDATION: Approval

Board of Directors
February 12, 2019
Page 16

Amendment # 0219-015
TIP # 6936D-19
Sponsor # 6I3415

PROJECT SPONSOR: MoDOT

ACTION REQUESTED: Revise FY 2019 & FY 2020 of the FY 2019-2022 TIP to add a project

TITLE: I-70

LIMITS: Stan Musial Veterans Memorial Bridge

DESCRIPTION: Bridge improvements and preventive maintenance

COUNTY: Multi-State

FUNDING SOURCE: National Highway Performance Program (NHPP)

	Federal	Match	Total
PE	\$82,198	\$85,802	\$168,000
ROW	\$0	\$0	\$0
Implementation	\$870,902	\$909,098	\$1,780,000
Total	\$953,100	\$994,900	\$1,948,000

AIR QUALITY CONFORMITY: Exempt – Widening narrow pavements or reconstructing bridges (no additional travel lanes) (§ 93.126)

STAFF RECOMMENDATION: Approval