




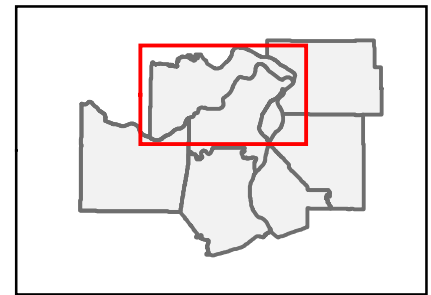
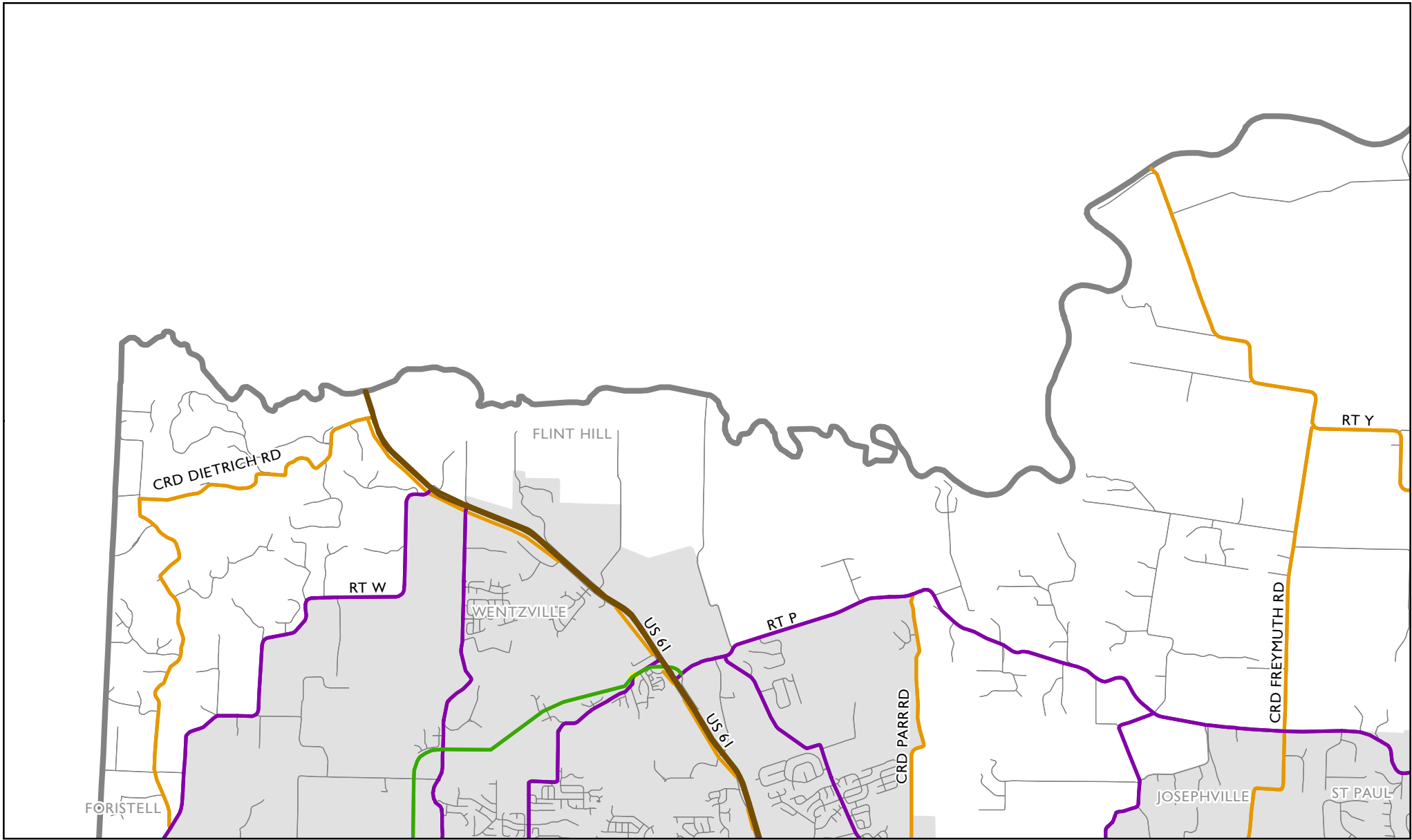


St. Charles County, Missouri
 Index of
 Functional Classification Maps
 November 2019

-  Map Index
-  County Boundary
-  Urban Area Boundary
-  Functionally Classified Roads
-  River or Lake





Map 1 of 10
 St. Charles County, Missouri
 November 2019

- Interstate
- Expressway
- Principal Arterial
- Minor Arterial
- Major Collector
- Minor Collector
- Local Road
- Planned Expressway
- Planned Minor Arterial
- Planned Major Collector
- Planned Minor Collector
- County Boundary
- Urban Area Boundary

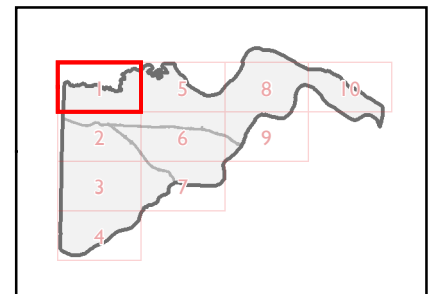
FHWA Approval
 December 8, 2020

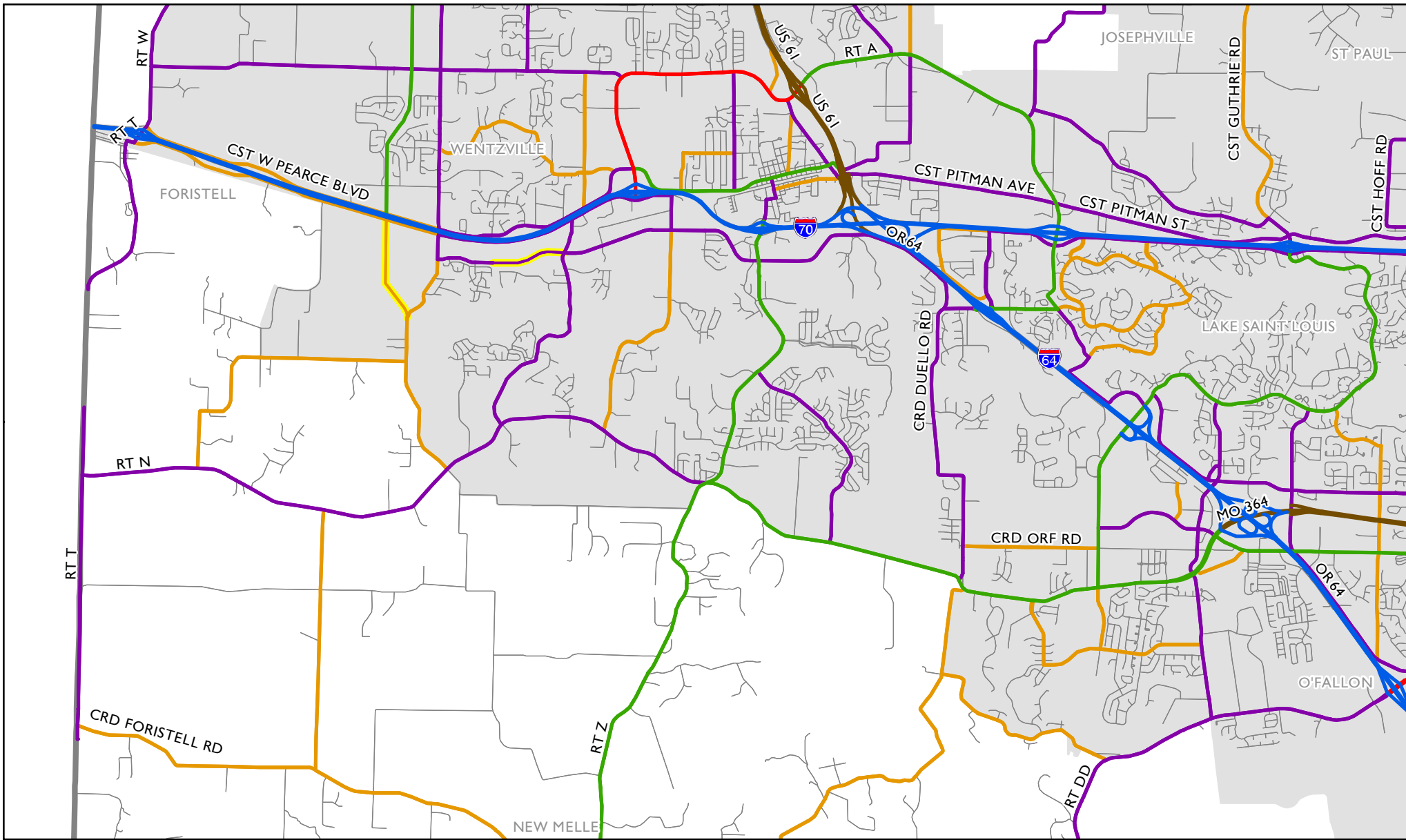


EAST-WEST GATEWAY
 Council of Governments




Miles



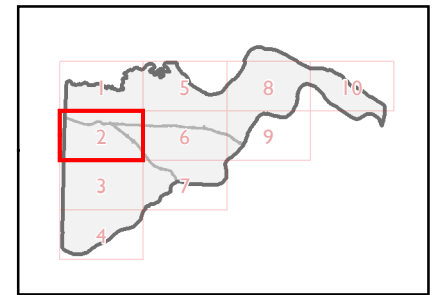


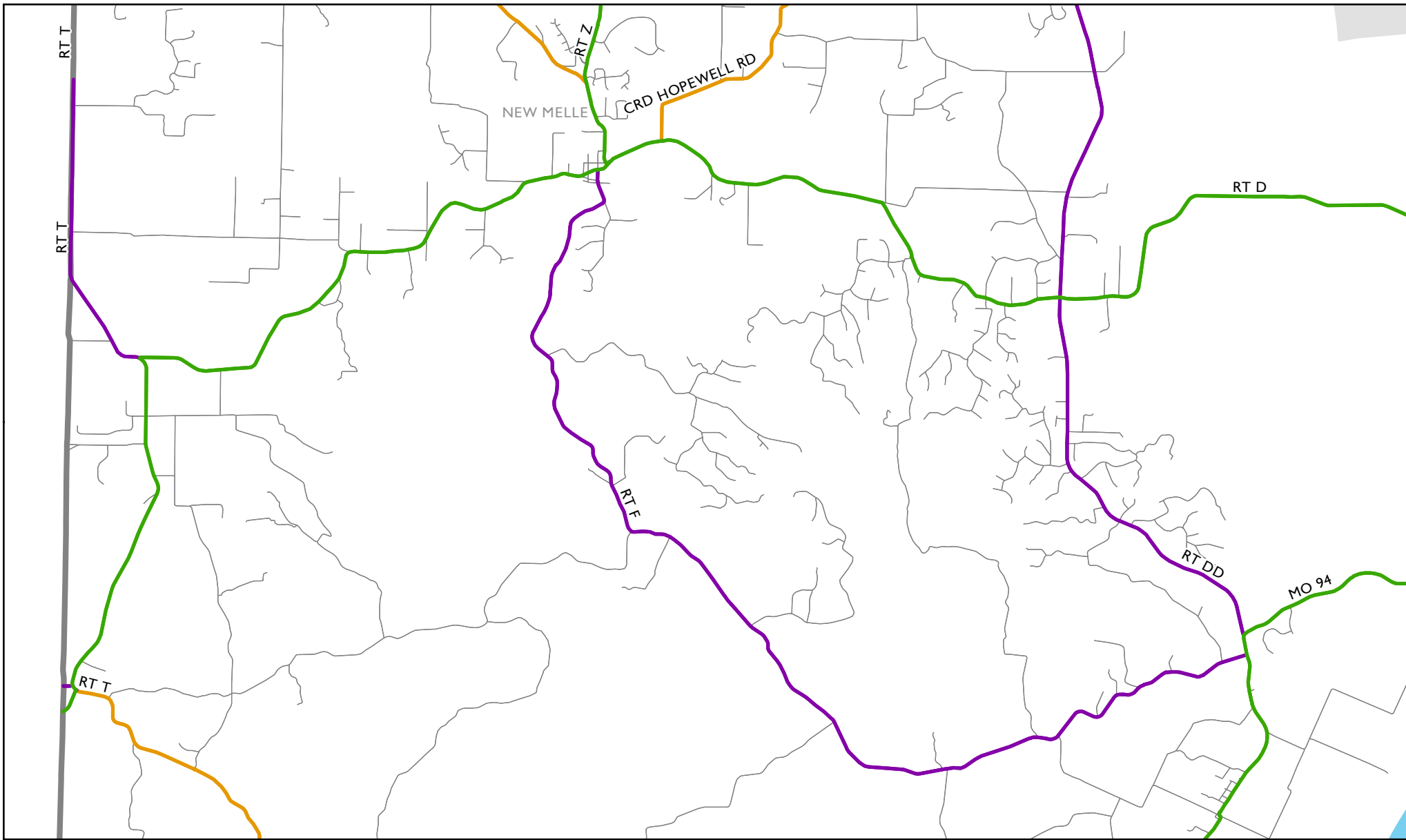
Map 2 of 10
 St. Charles County, Missouri
 November 2019

- Interstate
- Expressway
- Principal Arterial
- Minor Arterial
- Major Collector
- Minor Collector
- Local Road
- Planned Expressway
- Planned Minor Arterial
- Planned Major Collector
- Planned Minor Collector
- County Boundary
- Urban Area Boundary



FHWA Approval
 December 8, 2020

EAST-WEST GATEWAY
 Council of Governments





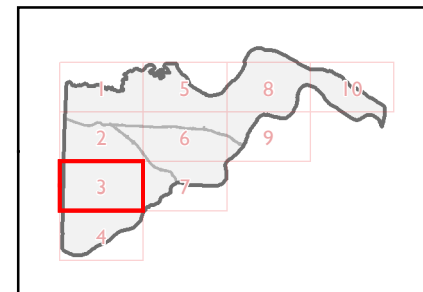
Map 3 of 10
 St. Charles County, Missouri
 November 2019

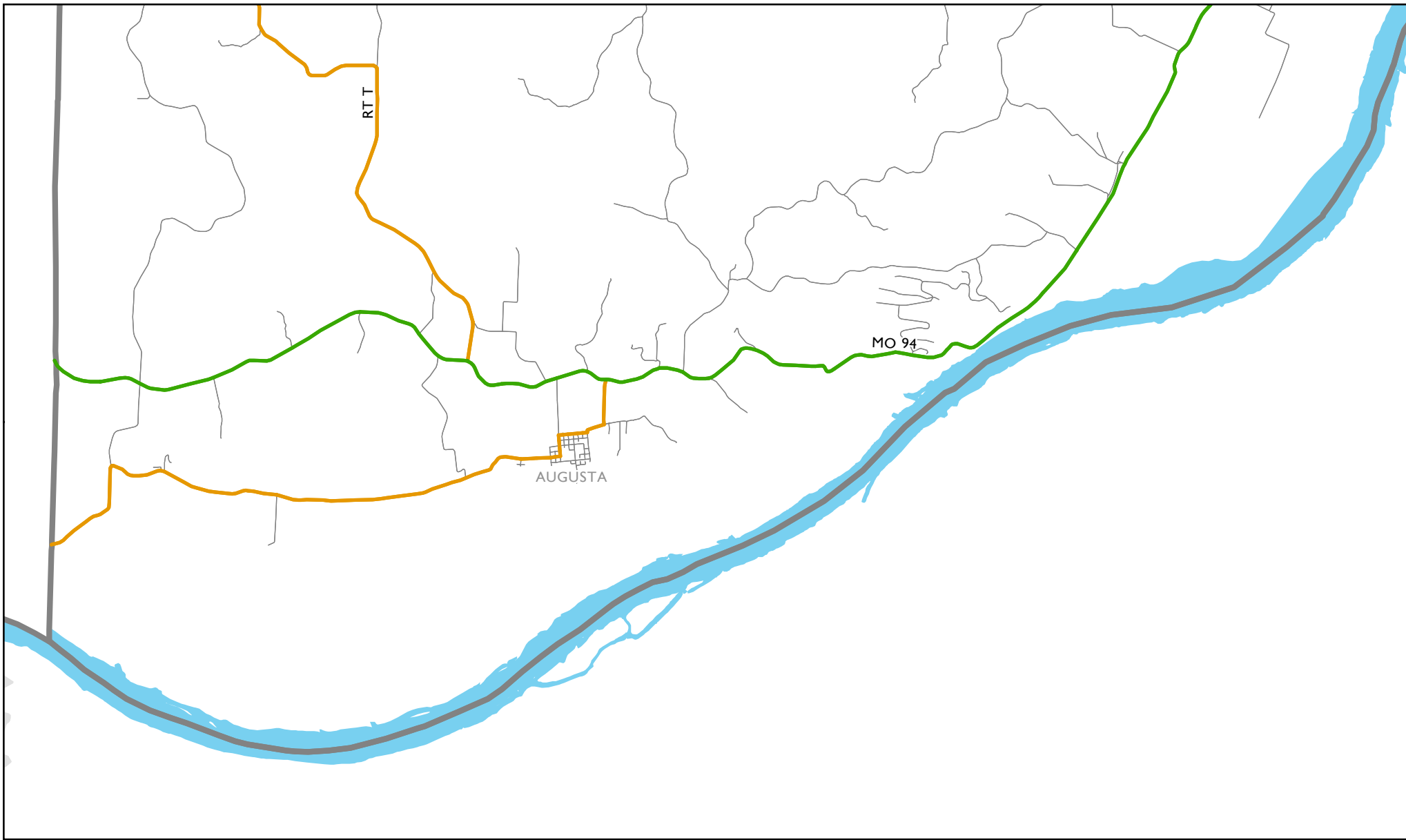
- Interstate
- Expressway
- Principal Arterial
- Minor Arterial
- Major Collector
- Minor Collector
- Local Road
- Planned Expressway
- Planned Minor Arterial
- Planned Major Collector
- Planned Minor Collector
-  County Boundary
-  Urban Area Boundary

FHWA Approval
 December 8, 2020



EAST-WEST GATEWAY
 Council of Governments





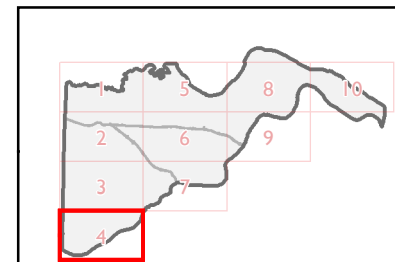
Map 4 of 10
 St. Charles County, Missouri
 November 2019

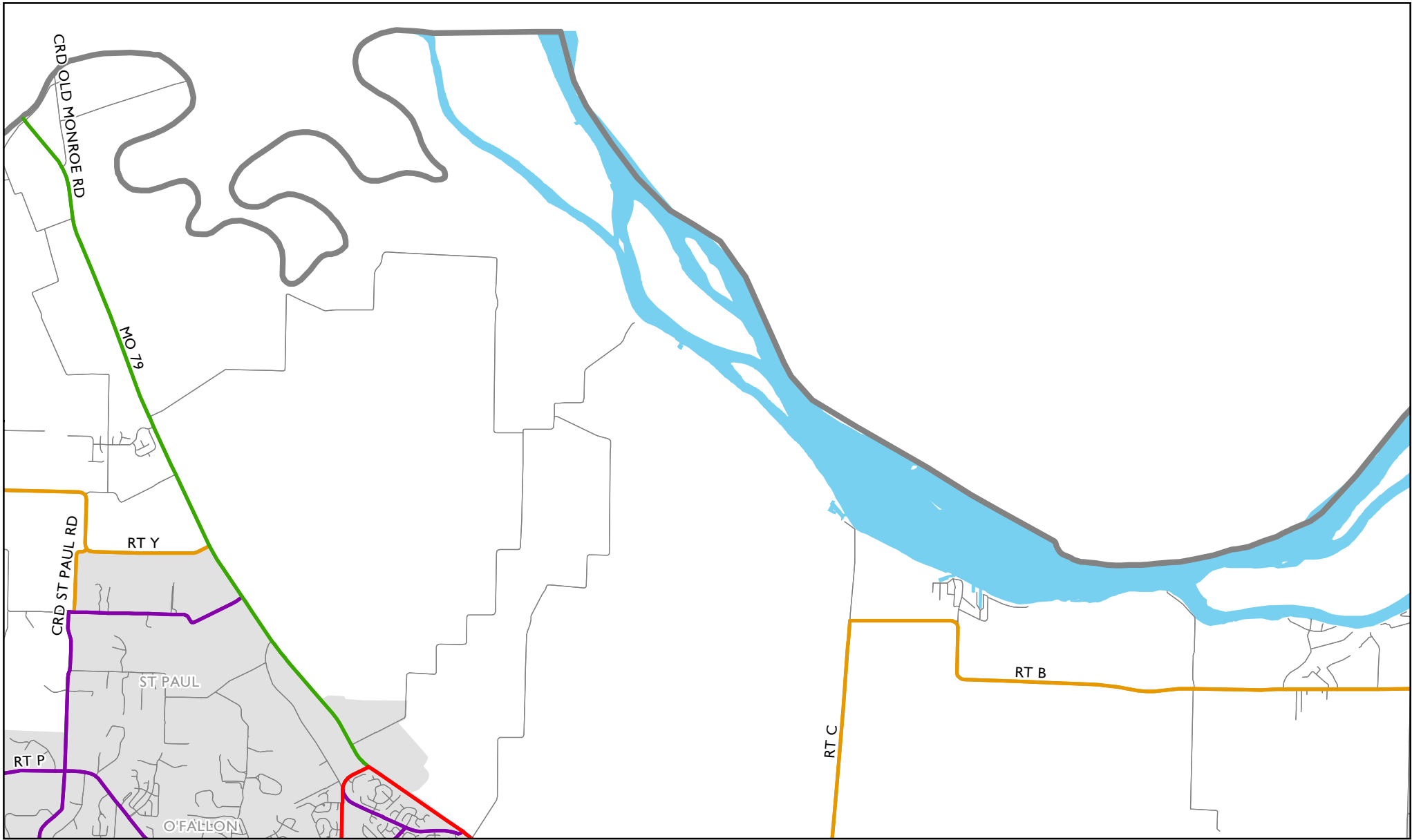
- Interstate
- Expressway
- Principal Arterial
- Minor Arterial
- Major Collector
- Minor Collector
- Local Road
- Planned Expressway
- Planned Minor Arterial
- Planned Major Collector
- Planned Minor Collector
- County Boundary
- Urban Area Boundary

FHWA Approval
 December 8, 2020



EAST-WEST GATEWAY
 Council of Governments





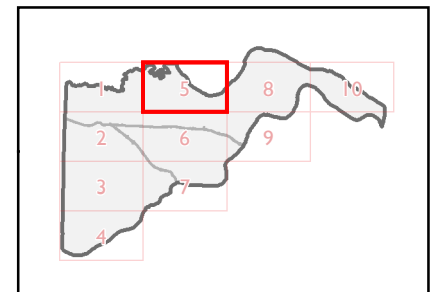
Map 5 of 10
St. Charles County, Missouri
 November 2019

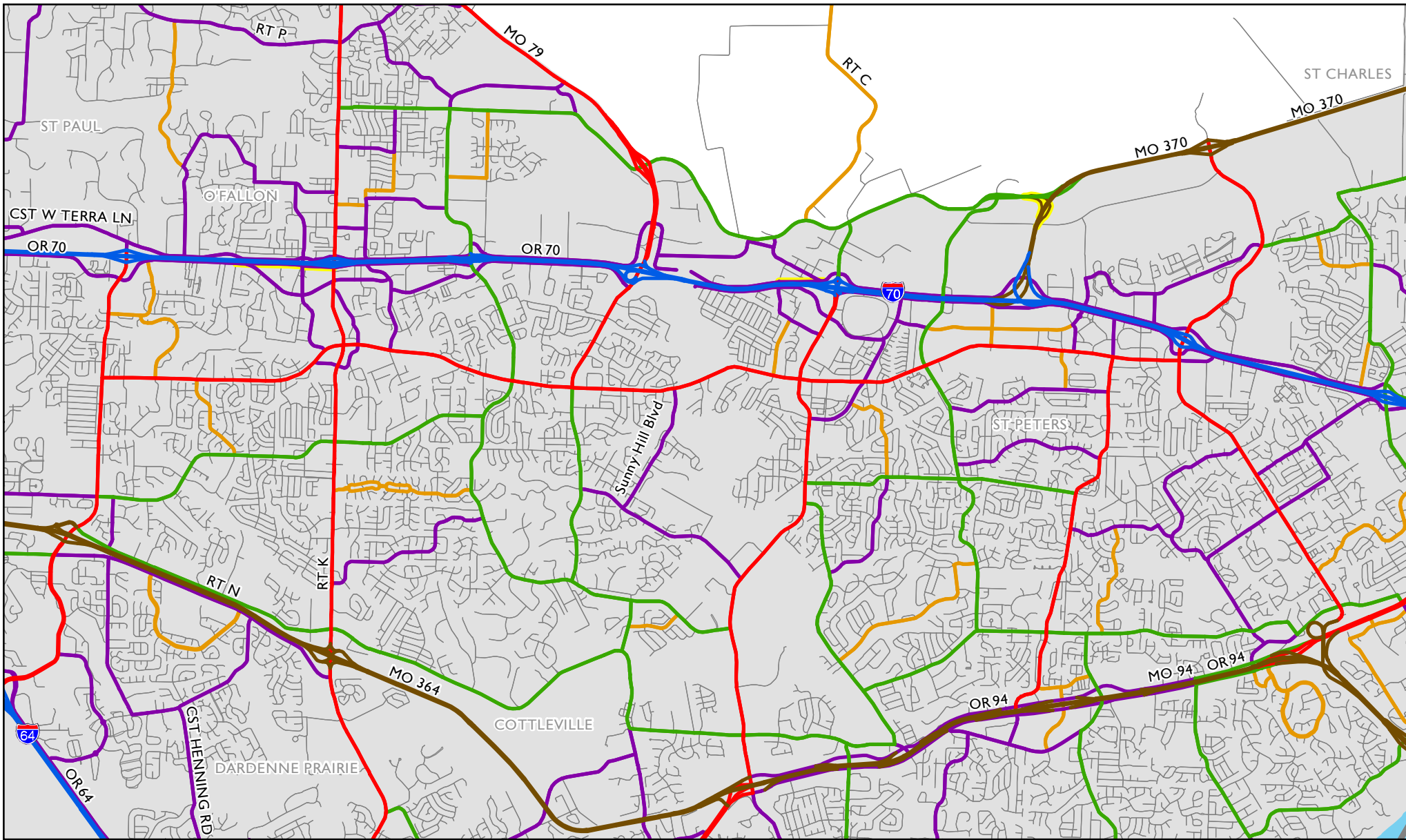
- Interstate
- Expressway
- Principal Arterial
- Minor Arterial
- Major Collector
- Minor Collector
- Local Road
- - - Planned Expressway
- - - Planned Minor Arterial
- - - Planned Major Collector
- - - Planned Minor Collector
- County Boundary
- Urban Area Boundary

FHWA Approval
 December 8, 2020



EAST-WEST GATEWAY
 Council of Governments





Map 6 of 10
St. Charles County, Missouri
 November 2019

- Interstate
- Expressway
- Principal Arterial
- Minor Arterial
- Major Collector
- Minor Collector
- Local Road
- Planned Expressway
- Planned Minor Arterial
- Planned Major Collector
- Planned Minor Collector
- County Boundary
- Urban Area Boundary

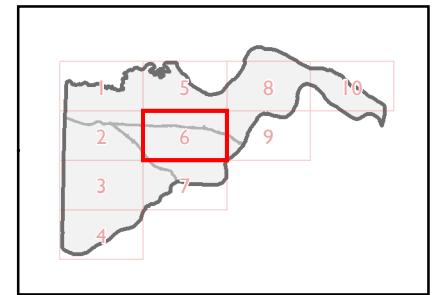
FHWA Approval
 December 8, 2020

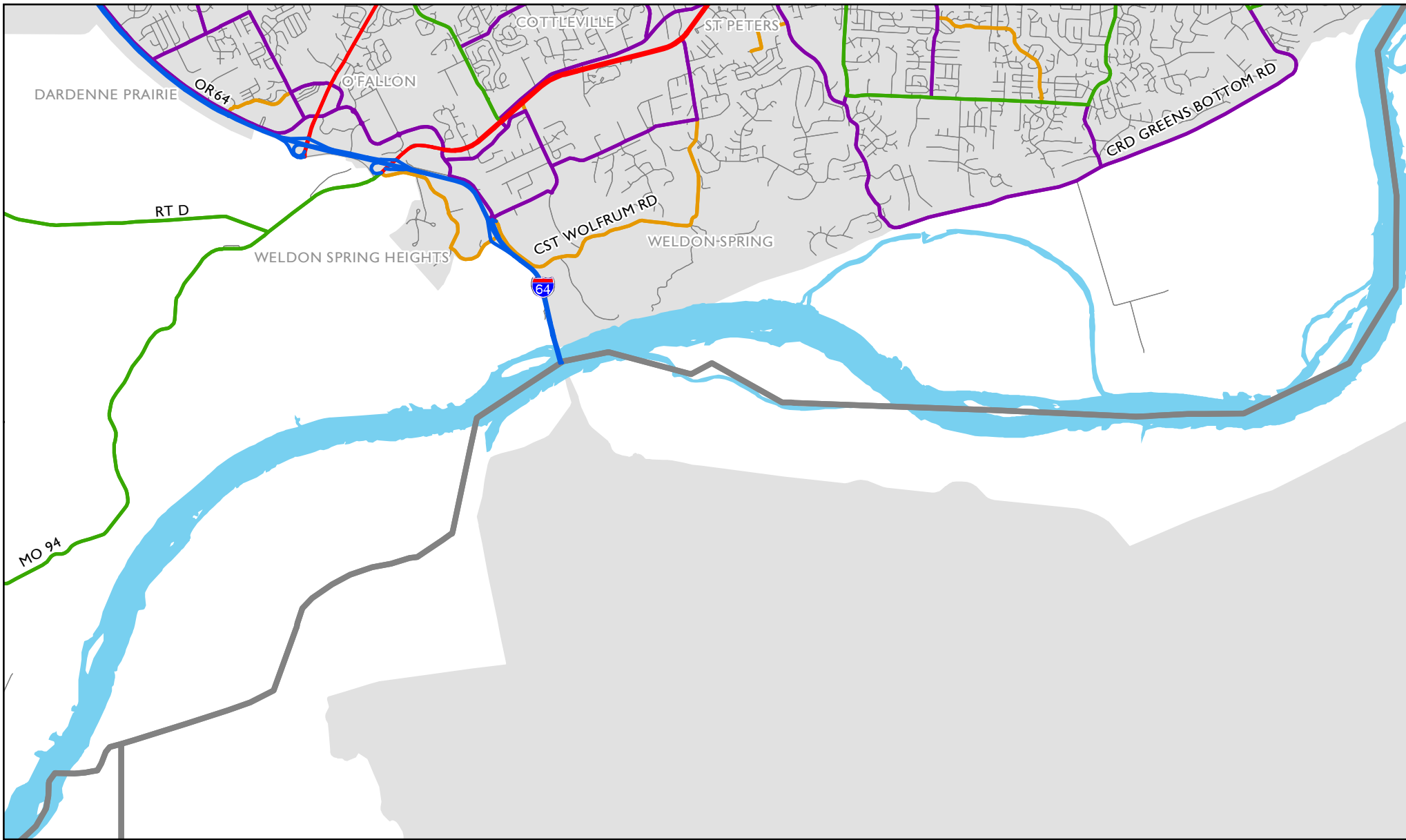


EAST-WEST GATEWAY
 Council of Governments




Miles





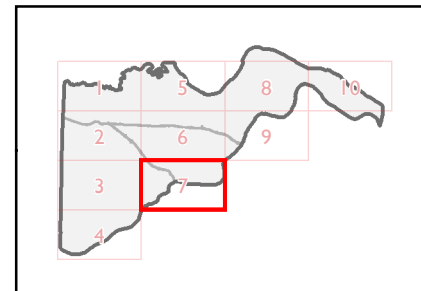
Map 7 of 10
 St. Charles County, Missouri
 November 2019

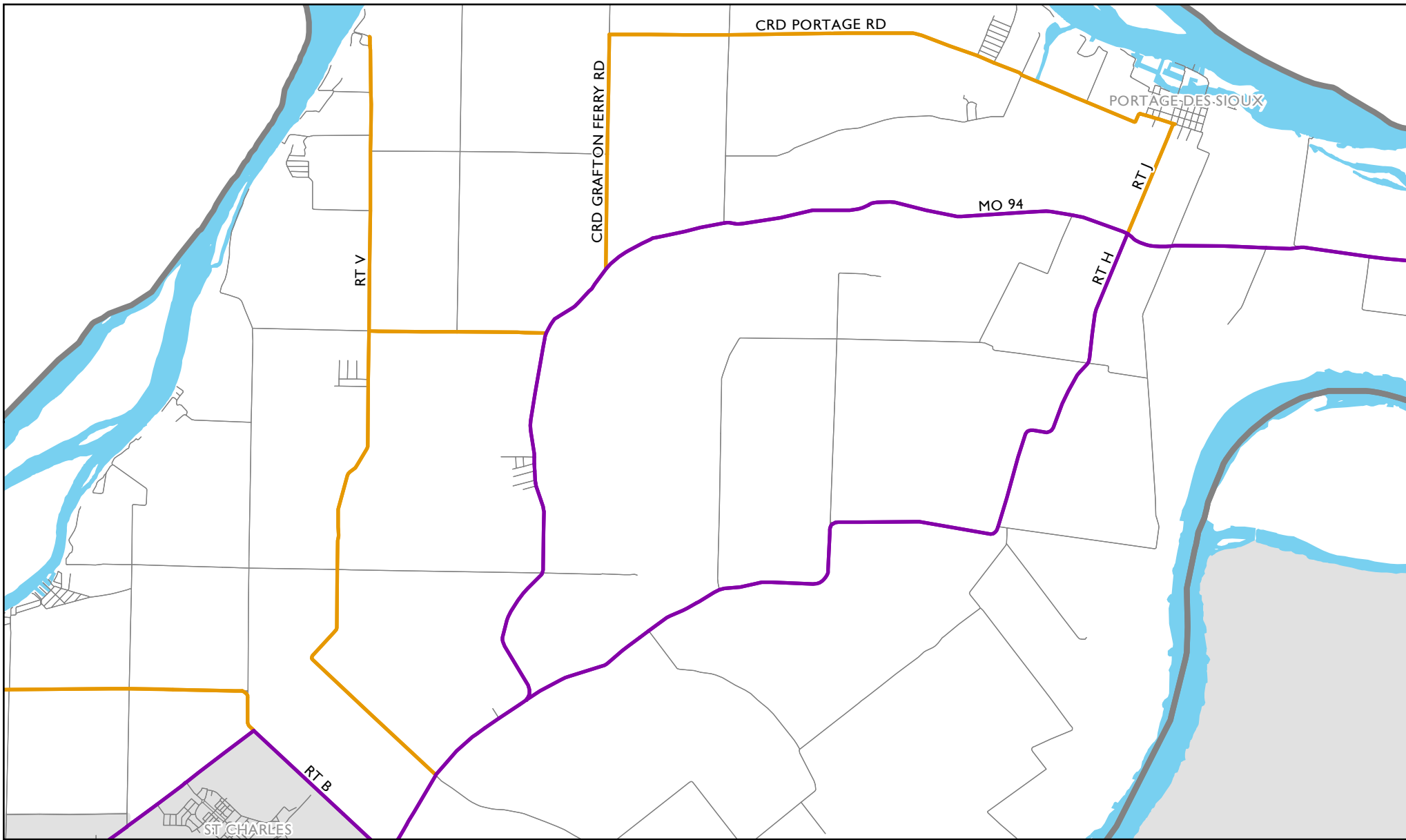
- Interstate
- Expressway
- Principal Arterial
- Minor Arterial
- Major Collector
- Minor Collector
- Local Road
- Planned Expressway
- Planned Minor Arterial
- Planned Major Collector
- Planned Minor Collector
- County Boundary
- Urban Area Boundary

FHWA Approval
 December 8, 2020





EAST-WEST GATEWAY
 Council of Governments



Map 8 of 10
 St. Charles County, Missouri
 November 2019

- Interstate
- Expressway
- Principal Arterial
- Minor Arterial
- Major Collector
- Minor Collector
- Local Road
- Planned Expressway
- Planned Minor Arterial
- Planned Major Collector
- Planned Minor Collector
-  County Boundary
-  Urban Area Boundary

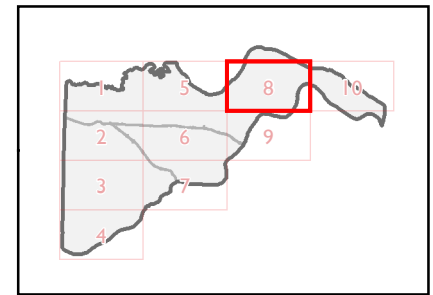
FHWA Approval
 December 8, 2020

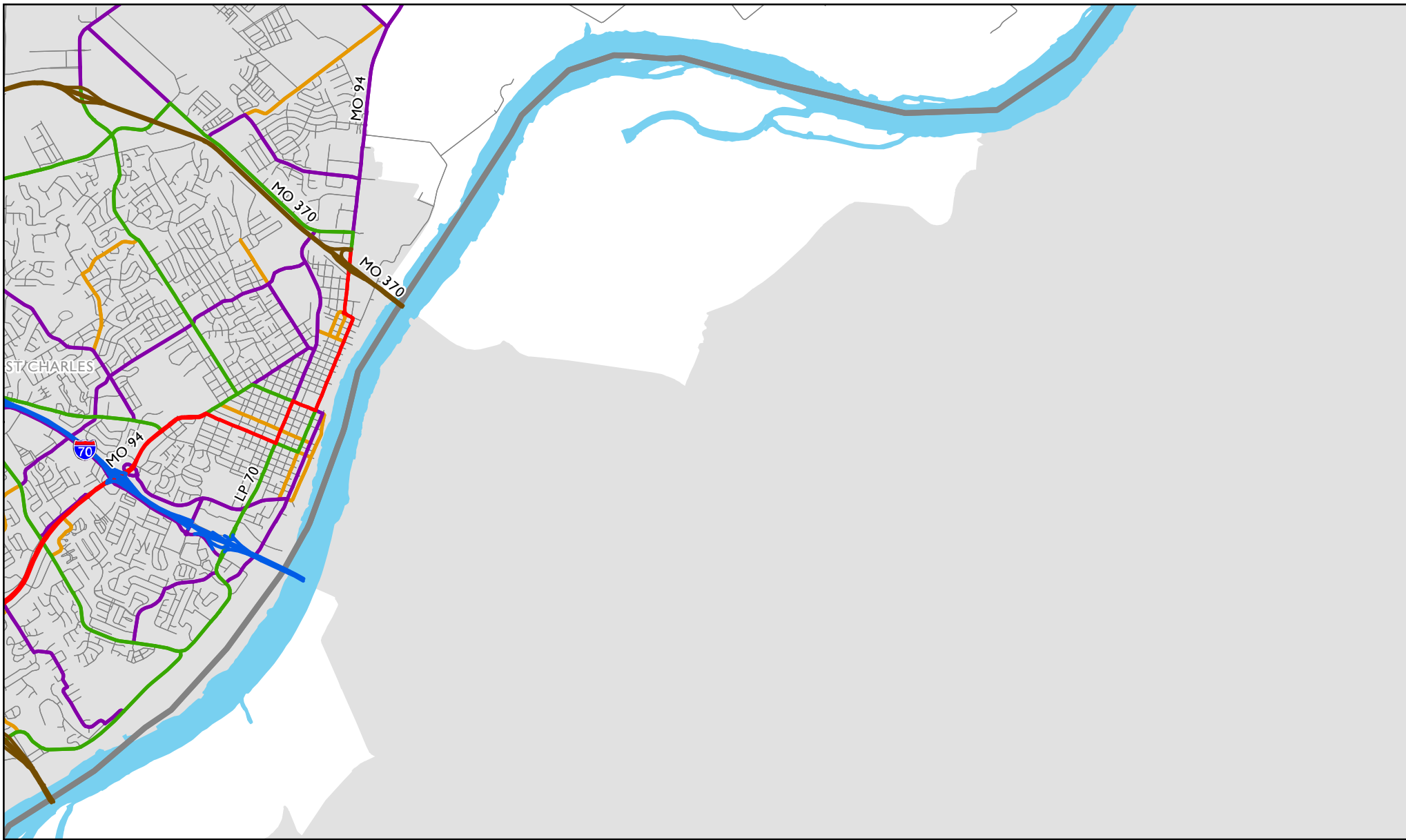


EAST-WEST GATEWAY
 Council of Governments



0 1 2
 Miles





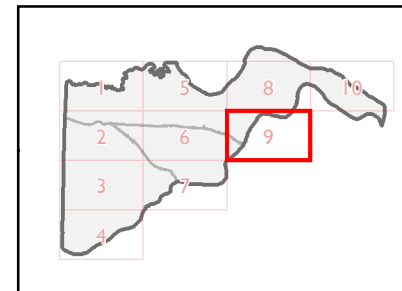
Map 9 of 10
 St. Charles County, Missouri
 November 2019

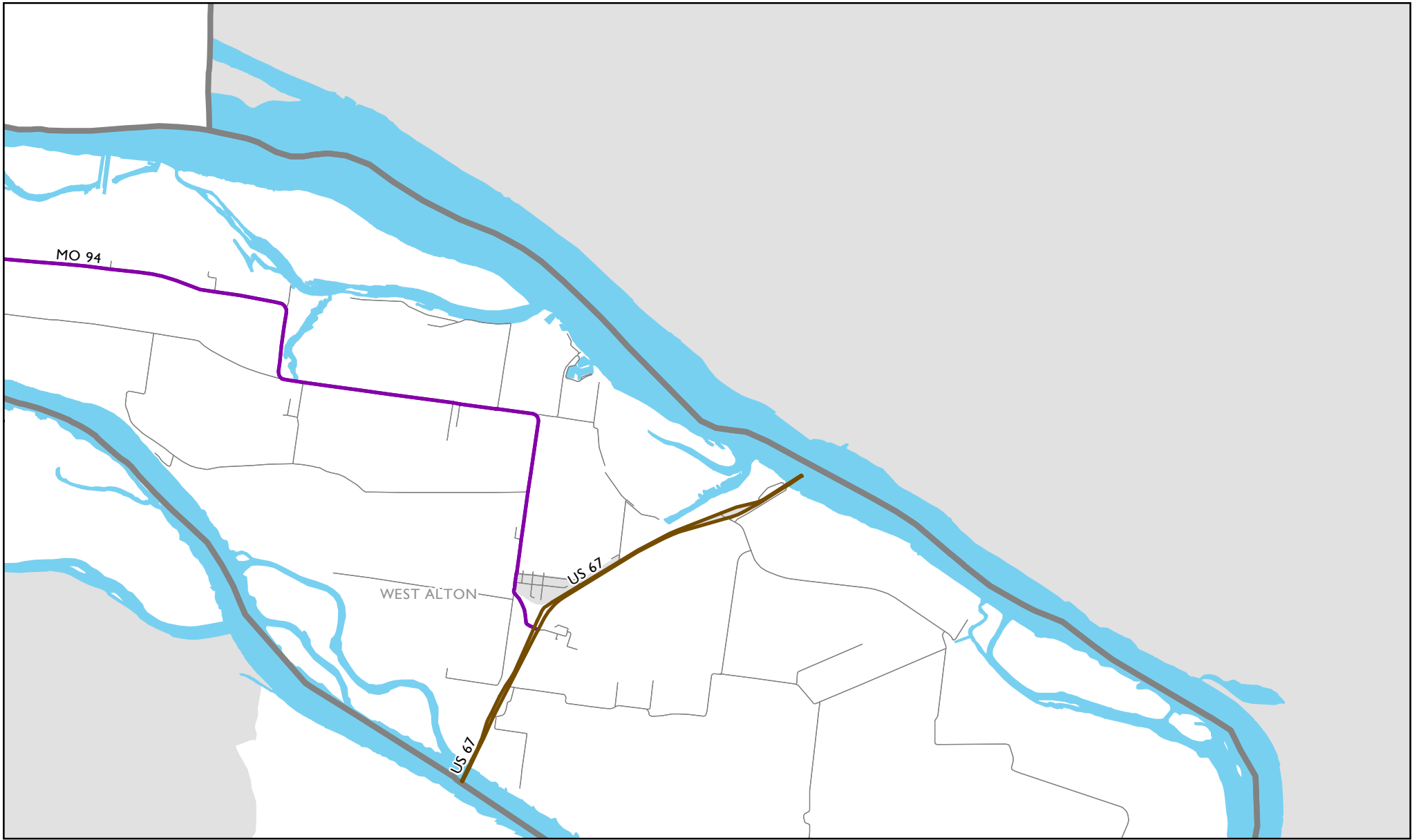
- Interstate
- Expressway
- Principal Arterial
- Minor Arterial
- Major Collector
- Minor Collector
- Local Road
- Planned Expressway
- Planned Minor Arterial
- Planned Major Collector
- Planned Minor Collector
- County Boundary
- Urban Area Boundary

FHWA Approval
 December 8, 2020





EAST-WEST GATEWAY
 Council of Governments





Map 10 of 10
 St. Charles County, Missouri
 November 2019

- Interstate
- Expressway
- Principal Arterial
- Minor Arterial
- Major Collector
- Minor Collector
- Local Road
- Planned Expressway
- Planned Minor Arterial
- Planned Major Collector
- Planned Minor Collector
-  County Boundary
-  Urban Area Boundary

FHWA Approval
 December 8, 2020



EAST-WEST GATEWAY
 Council of Governments

