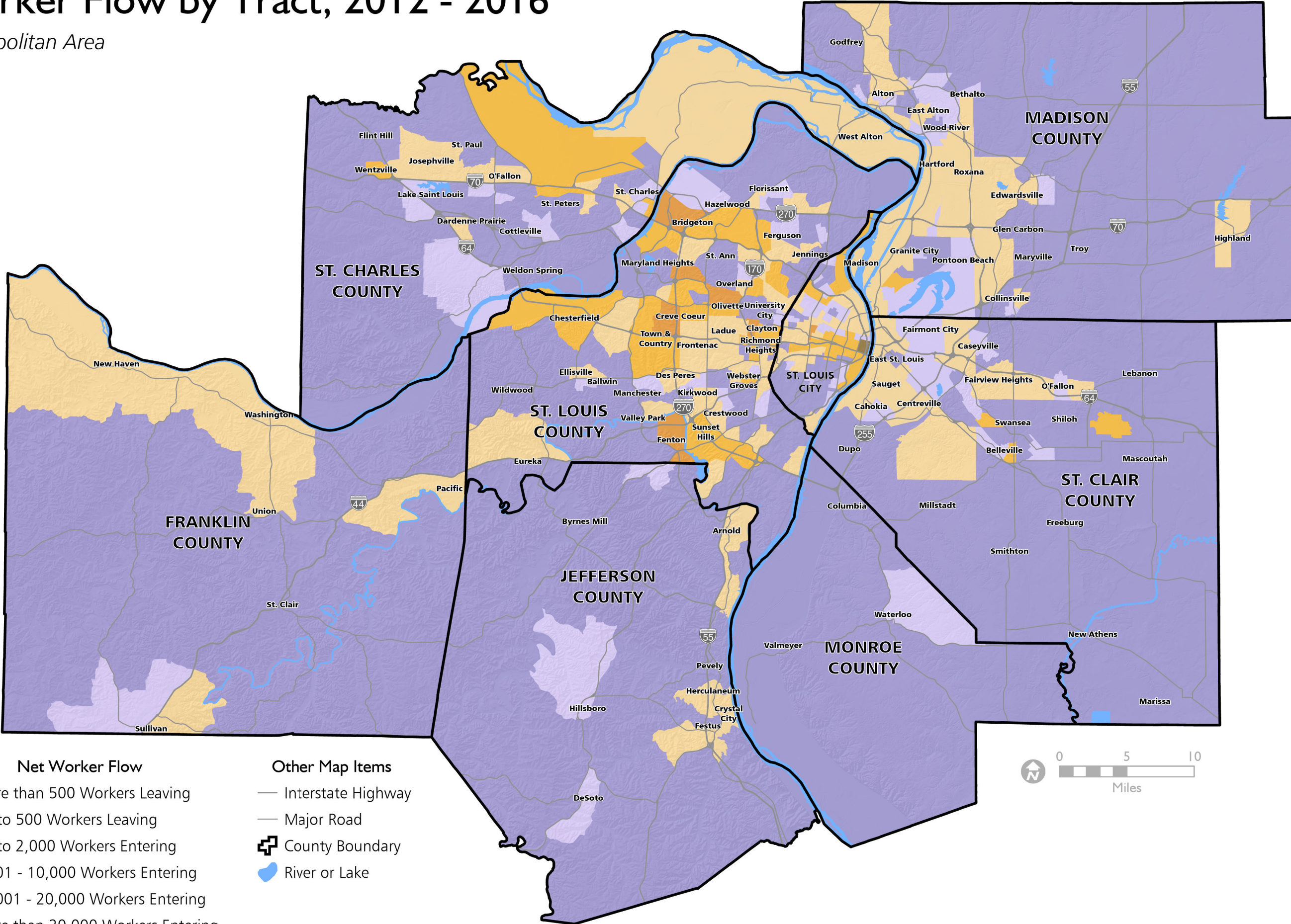


Net Worker Flow by Tract, 2012 - 2016

St. Louis Metropolitan Area
May 2020



- Net Worker Flow**
- More than 500 Workers Leaving
 - Up to 500 Workers Leaving
 - Up to 2,000 Workers Entering
 - 2,001 - 10,000 Workers Entering
 - 10,001 - 20,000 Workers Entering
 - More than 20,000 Workers Entering

- Other Map Items**
- Interstate Highway
 - Major Road
 - ▬ County Boundary
 - River or Lake



Data is depicted by 2010 Census tracts.
Tract boundaries are not shown on this map.

Sources: Census Transportation Planning Package 2012 - 2016;
East-West Gateway Council of Governments

