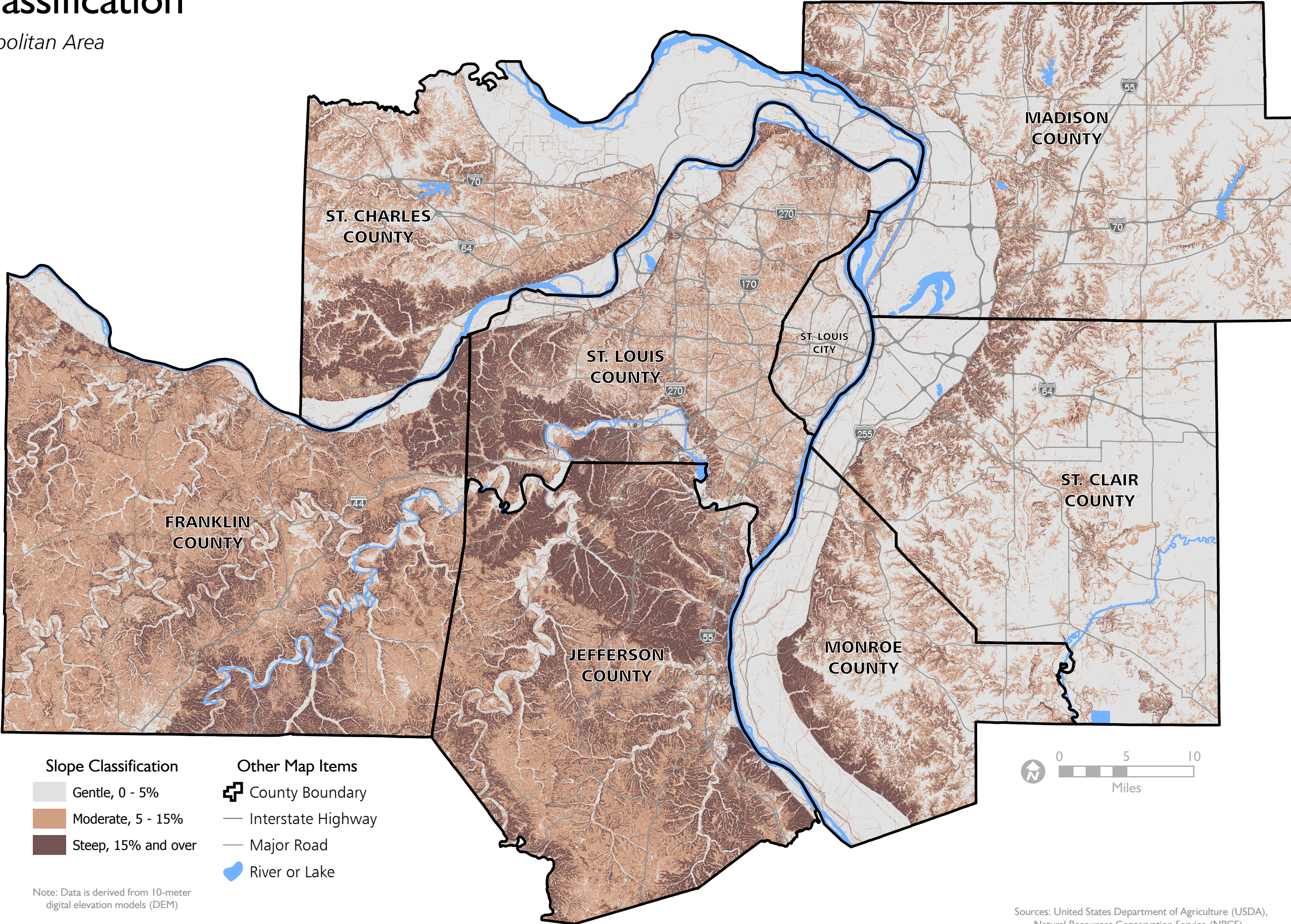


Slope Classification

St. Louis Metropolitan Area

April 2020



- Slope Classification**
- Gentle, 0 - 5%
 - Moderate, 5 - 15%
 - Steep, 15% and over

- Other Map Items**
- County Boundary
 - Interstate Highway
 - Major Road
 - River or Lake

Note: Data is derived from 10-meter digital elevation models (DEM)



Sources: United States Department of Agriculture (USDA),
Natural Resources Conservation Service (NRCS) -
National Geospatial Center of Excellence;
US Geological Survey (USGS);
East-West Gateway Council of Governments

