






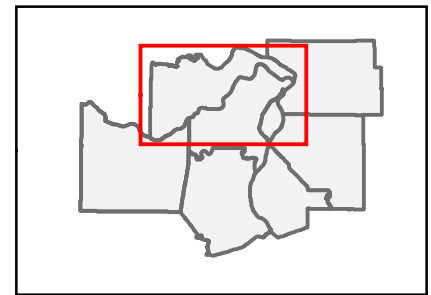
Click on a number on the map to see a more detailed version of that section

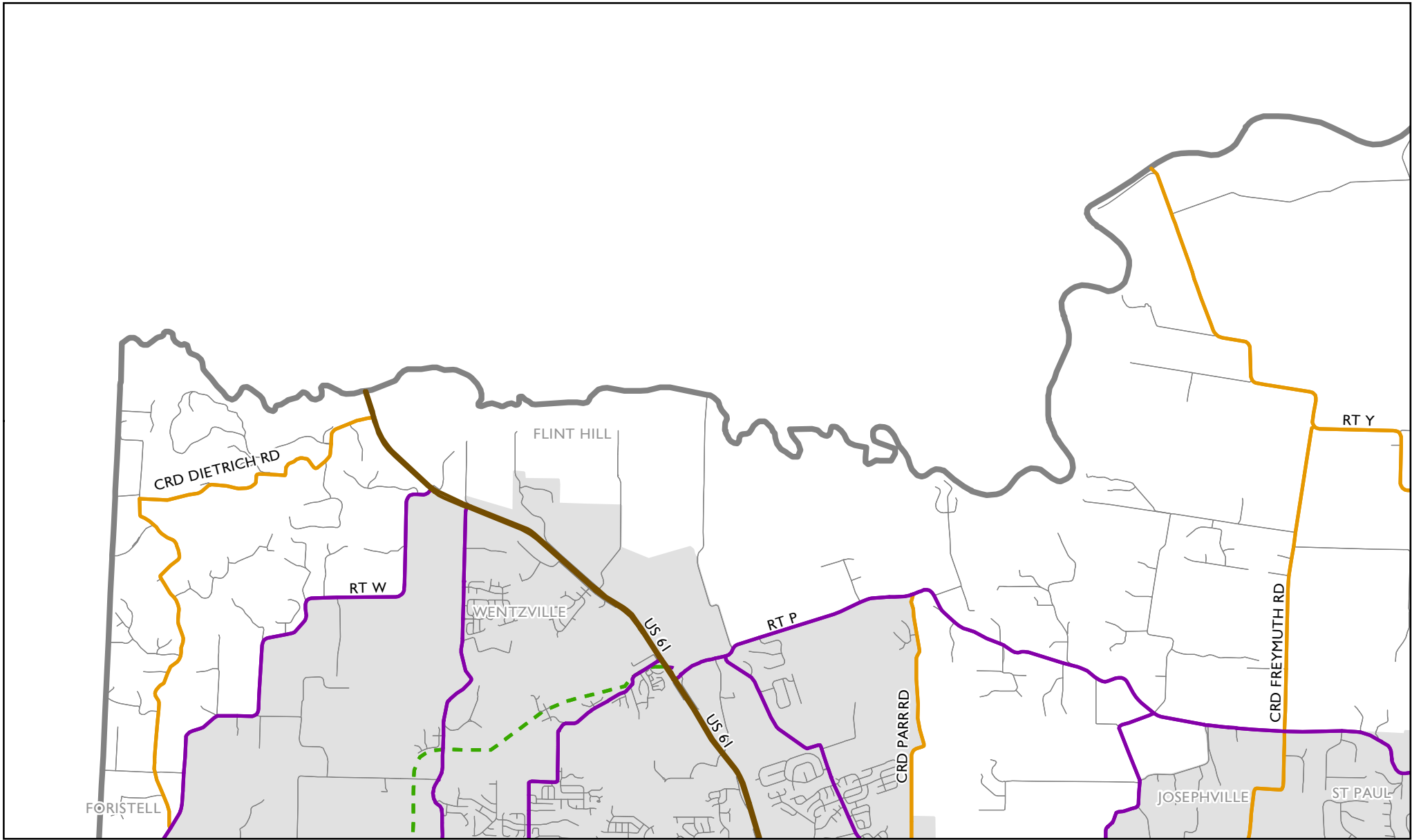
St. Charles County, Missouri
 Index of
 Functional Classification Maps
 March 2018

-  Map Index
-  County Boundary
-  Urban Area Boundary
-  Functionally Classified Roads
-  River or Lake


 EAST-WEST GATEWAY
 Council of Governments

0 5 10
 Miles





Map 1 of 10
 St. Charles County, Missouri
 March 2018

- Interstate
- Expressway
- Principal Arterial
- Minor Arterial
- Major Collector
- Minor Collector
- Local Road
- - - Planned Minor Arterial
- - - Planned Major Collector
- - - Planned Minor Collector
- County Boundary
- Urban Area Boundary

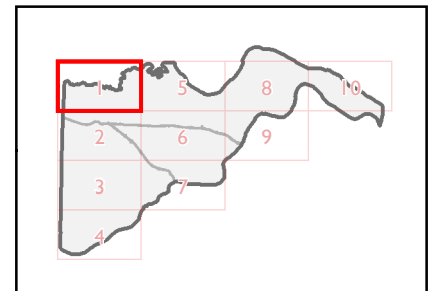
FHWA Approval
 February 7, 2018

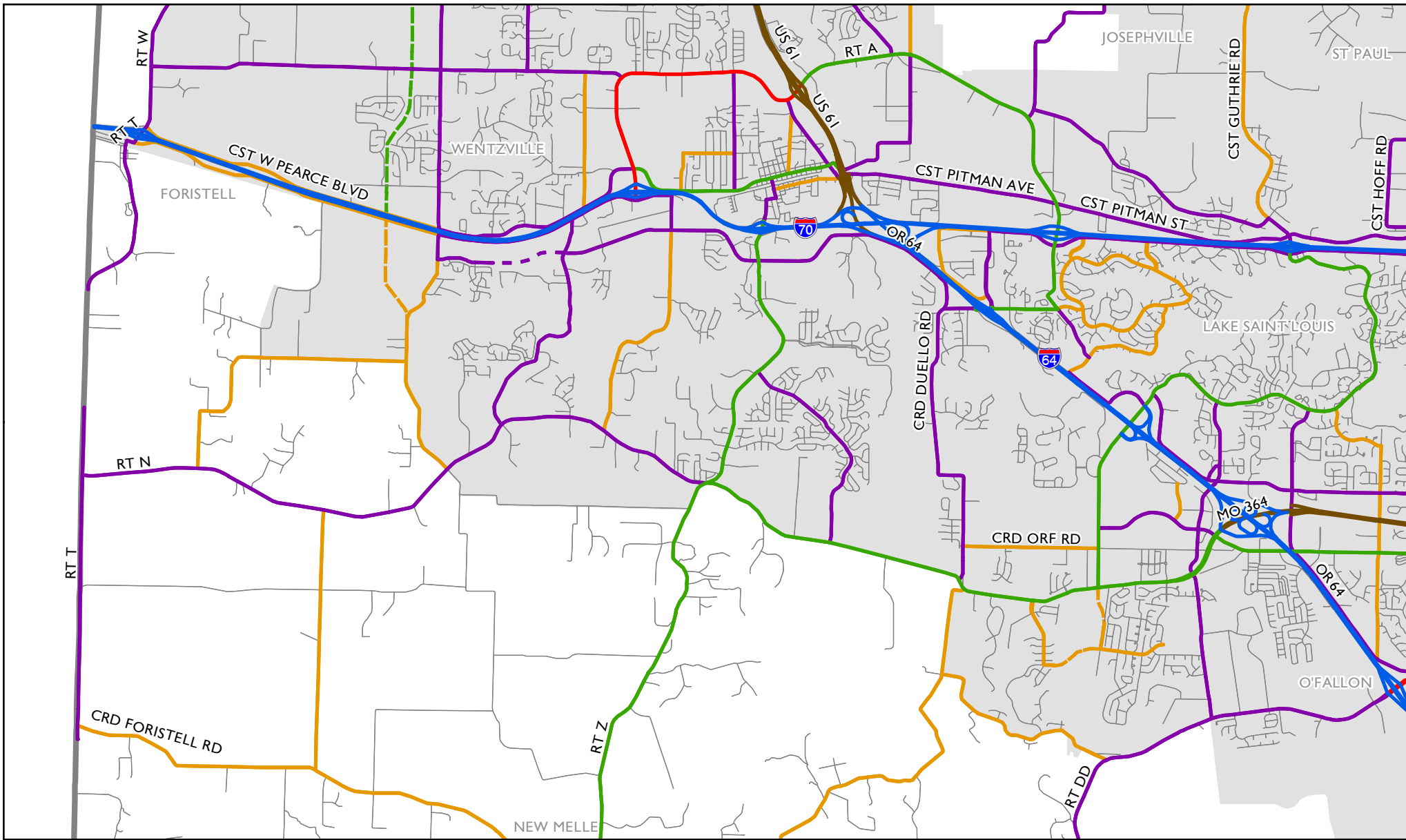


EAST-WEST GATEWAY
 Council of Governments



Miles





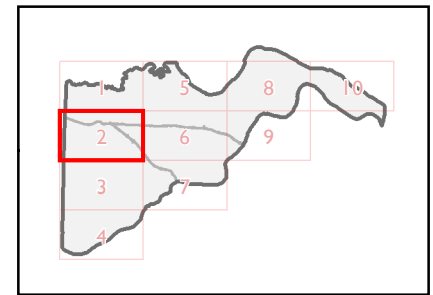
Map 2 of 10
 St. Charles County, Missouri
 March 2018

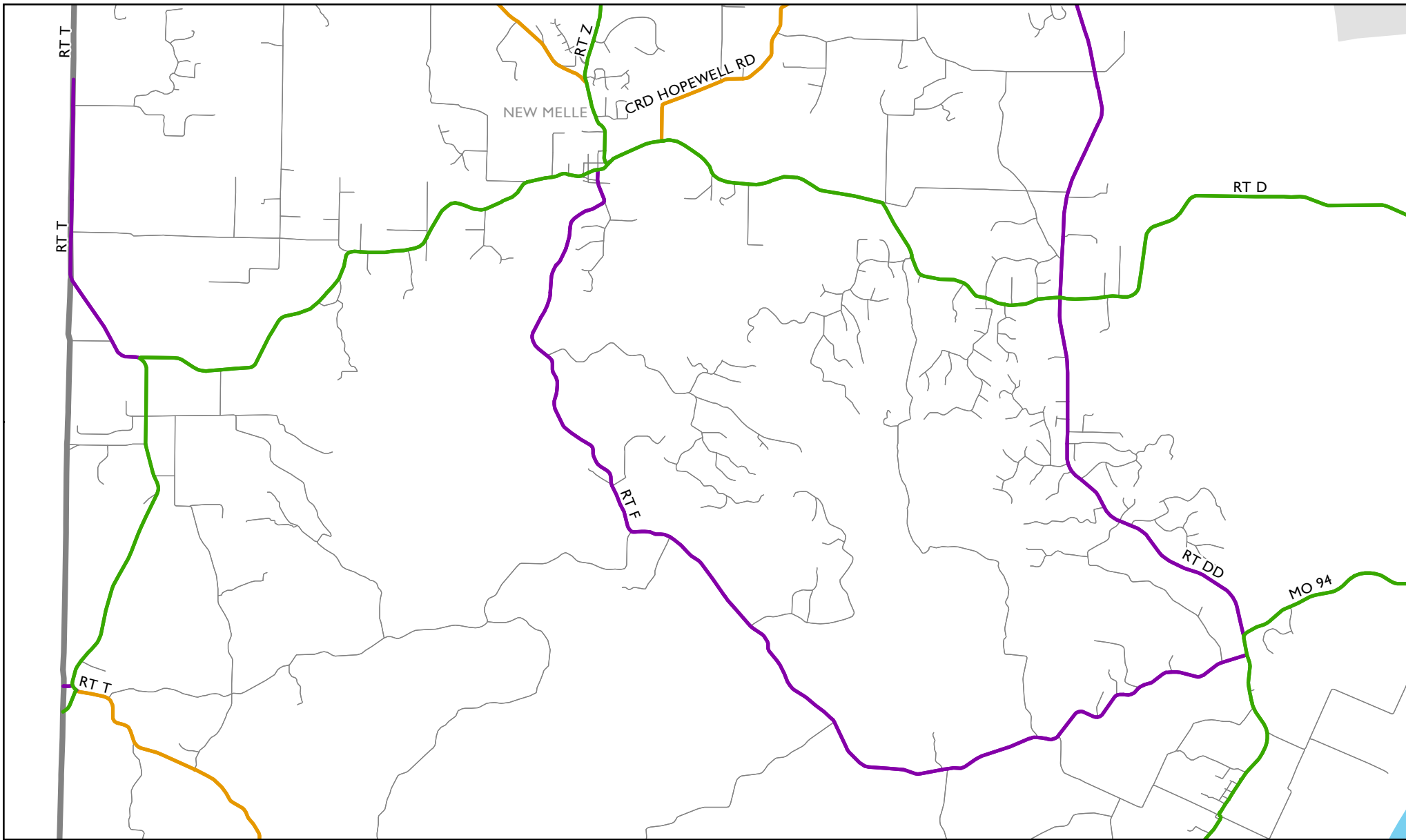
- Interstate
- Expressway
- Principal Arterial
- Minor Arterial
- Major Collector
- Minor Collector
- Local Road
- Planned Minor Arterial
- Planned Major Collector
- Planned Minor Collector
- County Boundary
- Urban Area Boundary

FHWA Approval
 February 7, 2018


EAST-WEST GATEWAY
 Council of Governments



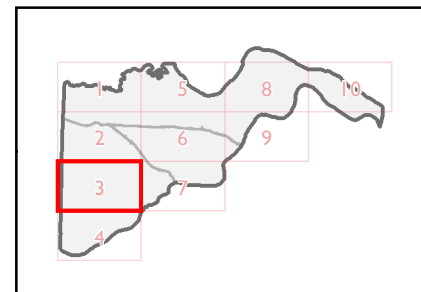



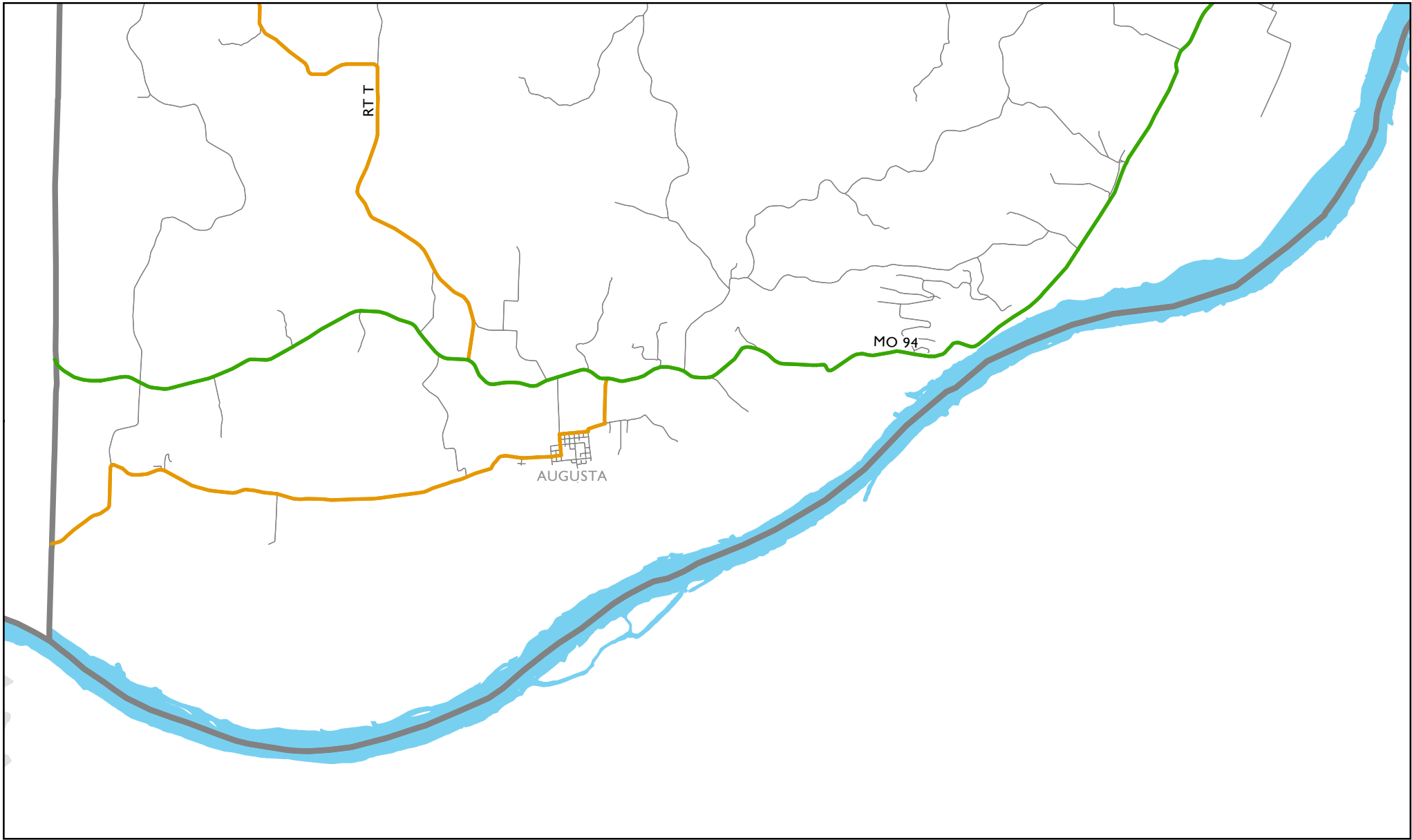


Map 3 of 10
 St. Charles County, Missouri
 March 2018



- Interstate
- Expressway
- Principal Arterial
- Minor Arterial
- Major Collector
- Minor Collector
- Local Road
- - - Planned Minor Arterial
- - - Planned Major Collector
- - - Planned Minor Collector
- County Boundary
- Urban Area Boundary

FHWA Approval
 February 7, 2018





Map 4 of 10
 St. Charles County, Missouri
 March 2018

- Interstate
- Expressway
- Principal Arterial
- Minor Arterial
- Major Collector
- Minor Collector
- Local Road
- - - Planned Minor Arterial
- - - Planned Major Collector
- - - Planned Minor Collector
-  County Boundary
-  Urban Area Boundary

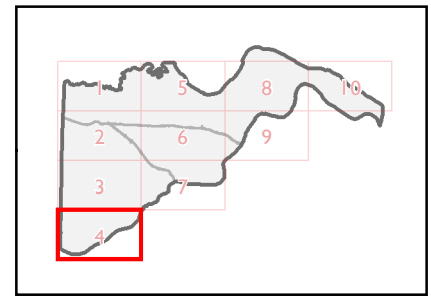
FHWA Approval
 February 7, 2018

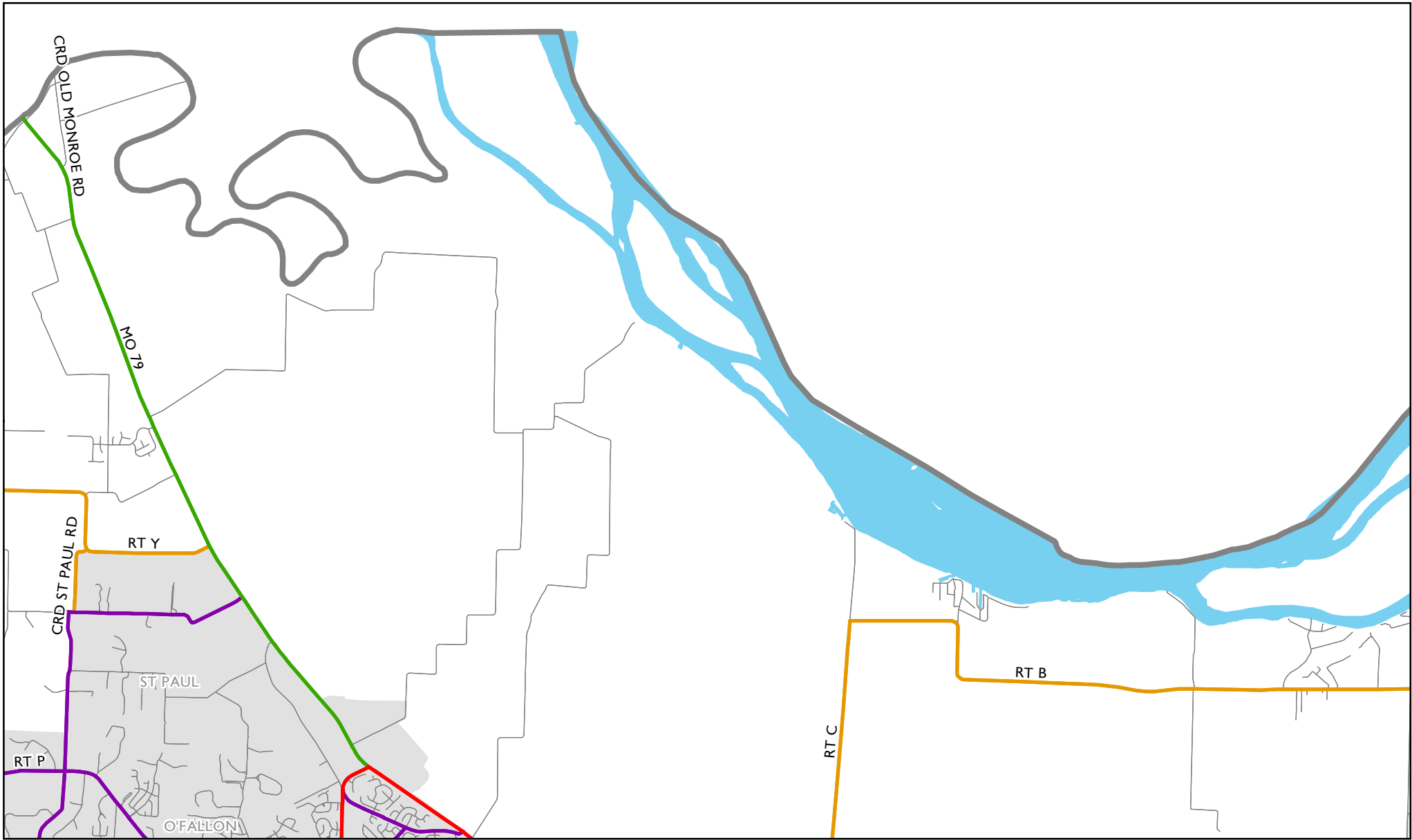


EAST-WEST GATEWAY
 Council of Governments




Miles



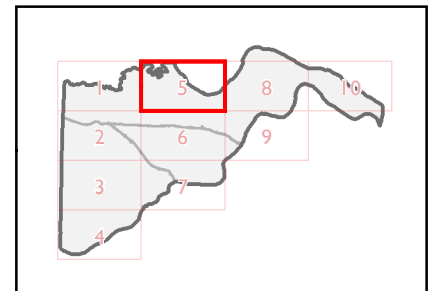


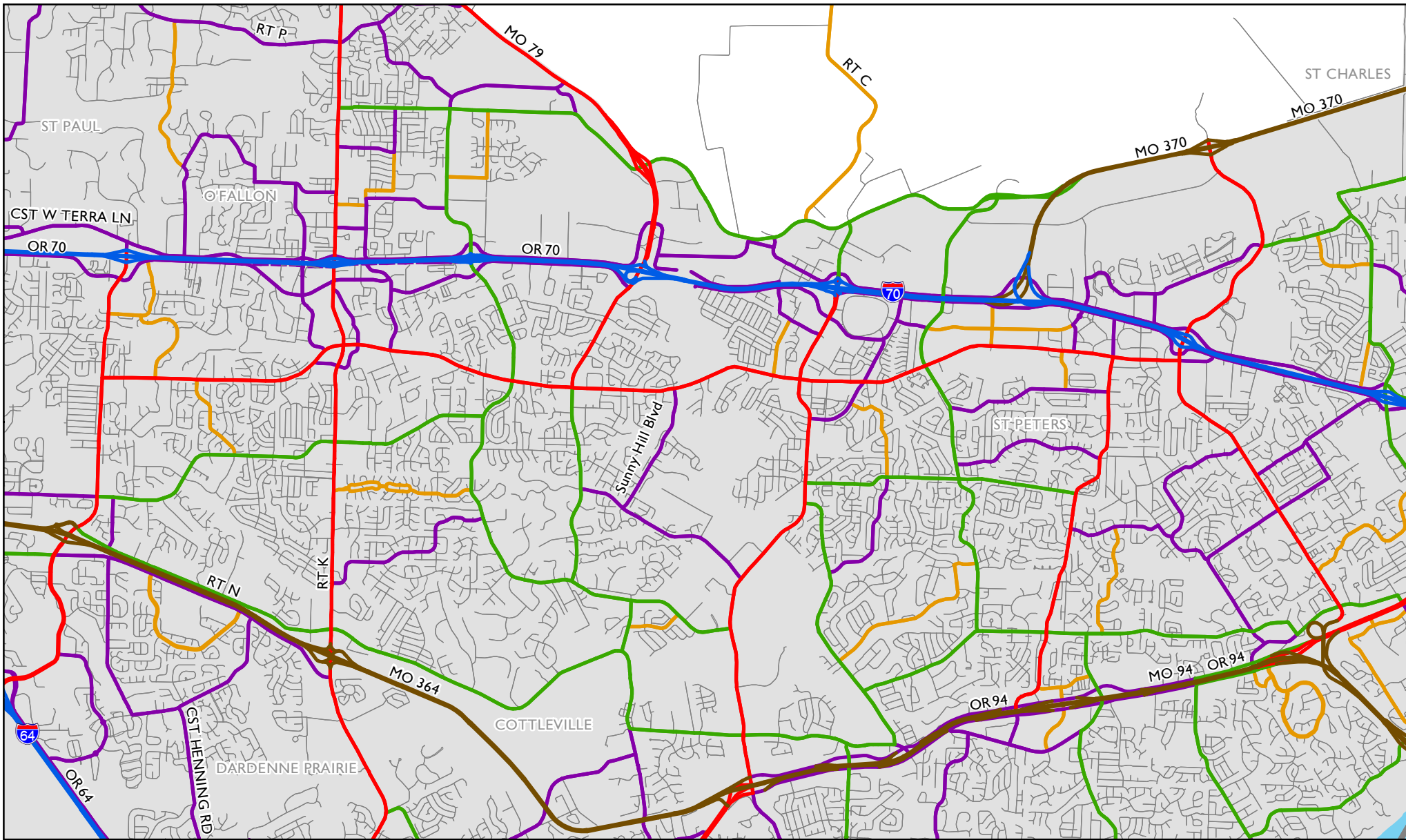
Map 5 of 10
 St. Charles County, Missouri
 March 2018

- Interstate
- Expressway
- Principal Arterial
- Minor Arterial
- Major Collector
- Minor Collector
- Local Road
- Planned Minor Arterial
- Planned Major Collector
- Planned Minor Collector
- County Boundary
- Urban Area Boundary

FHWA Approval
 February 7, 2018

EAST-WEST GATEWAY
 Council of Governments



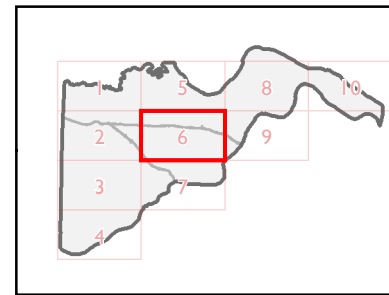


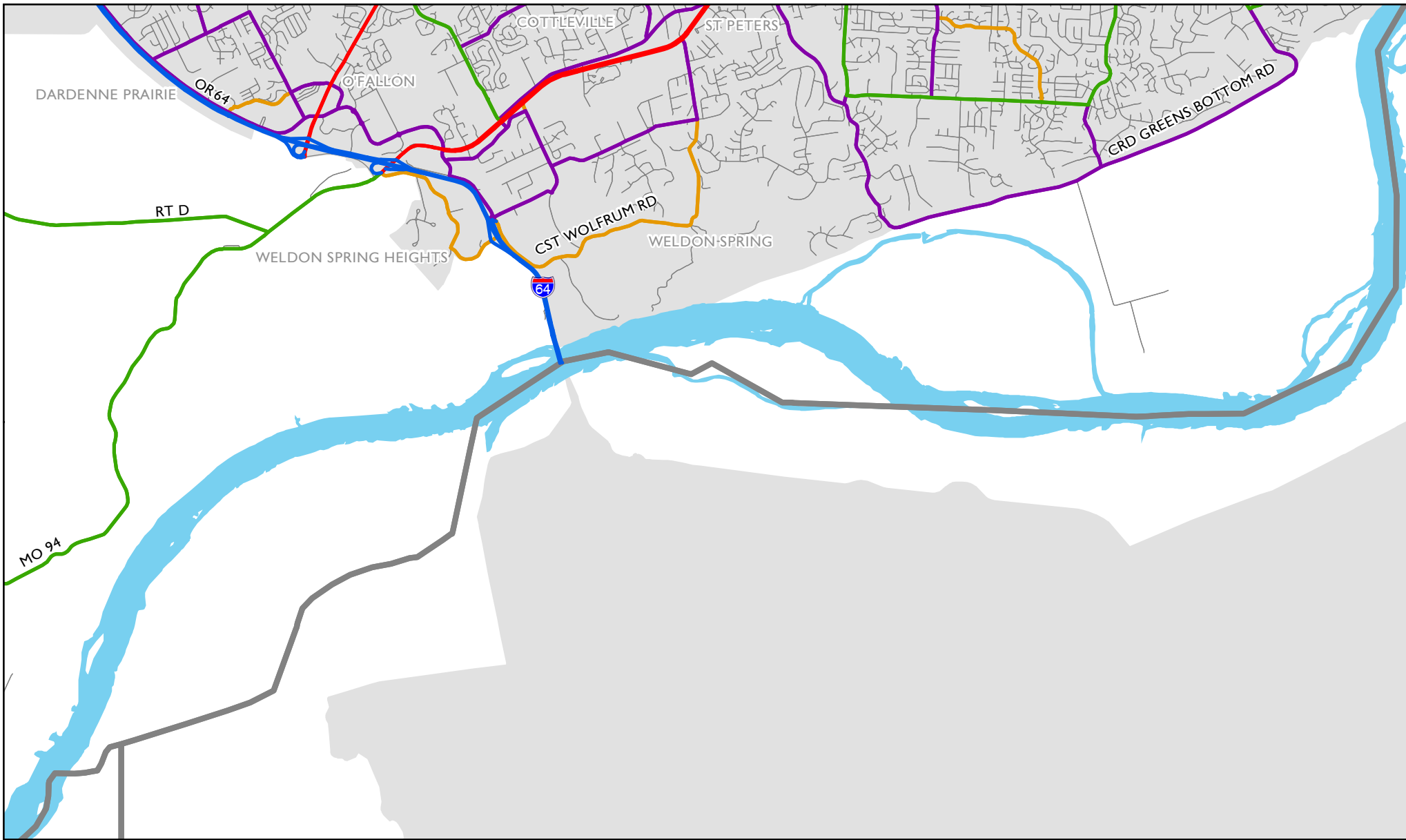
Map 6 of 10
 St. Charles County, Missouri
 March 2018

- Interstate
- Expressway
- Principal Arterial
- Minor Arterial
- Major Collector
- Minor Collector
- Local Road
- - - Planned Minor Arterial
- - - Planned Major Collector
- - - Planned Minor Collector
- County Boundary
- Urban Area Boundary

FHWA Approval
 February 7, 2018

EAST-WEST GATEWAY
 Council of Governments





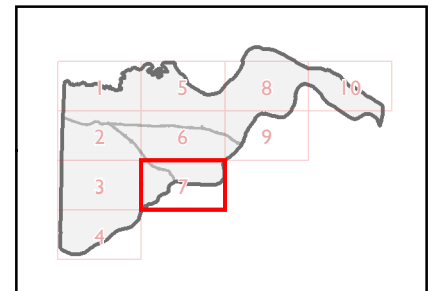
Map 7 of 10
 St. Charles County, Missouri
 March 2018

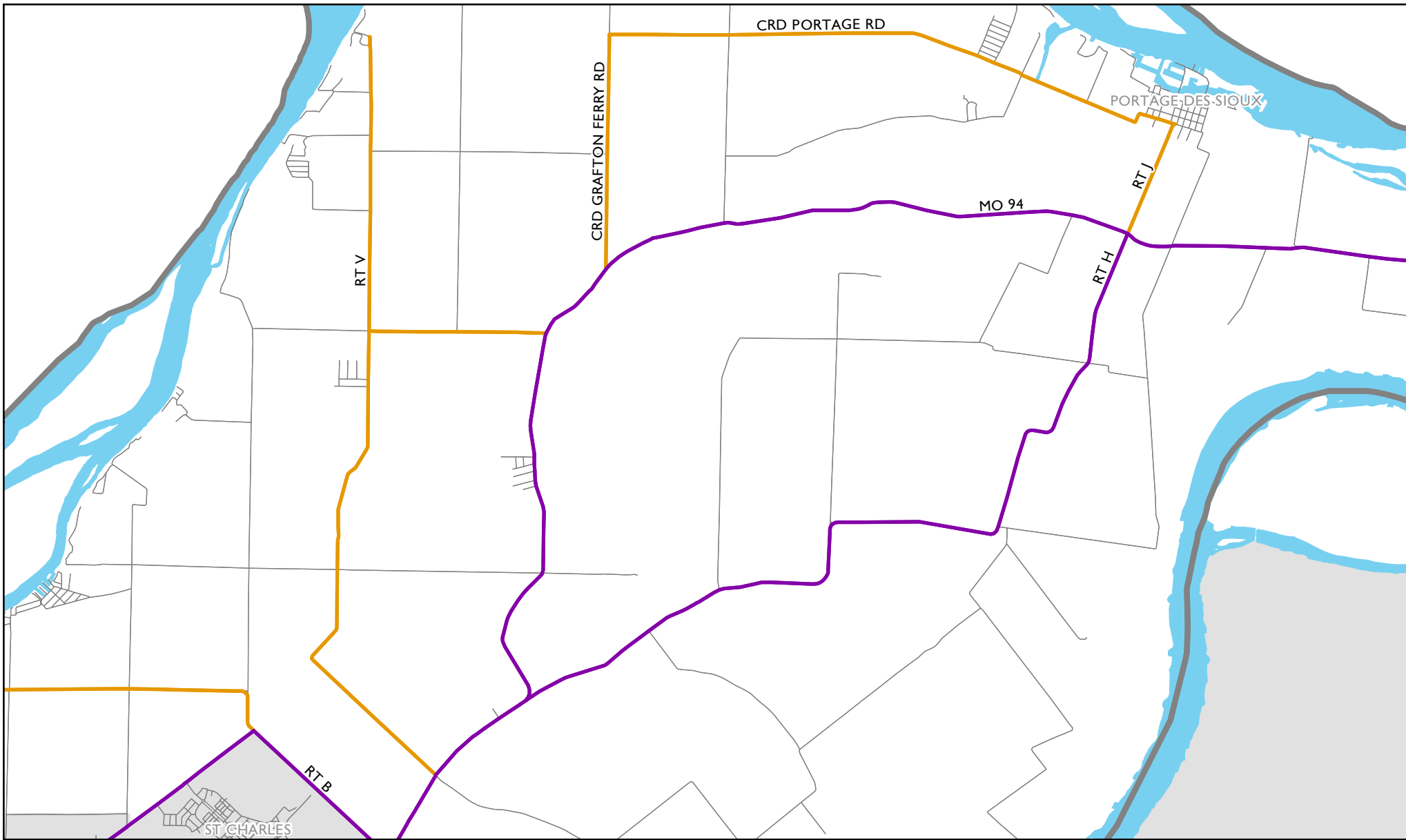
- Interstate
- Expressway
- Principal Arterial
- Minor Arterial
- Major Collector
- Minor Collector
- Local Road
- - - Planned Minor Arterial
- - - Planned Major Collector
- - - Planned Minor Collector
- County Boundary
- Urban Area Boundary

FHWA Approval
 February 7, 2018





EAST-WEST GATEWAY
 Council of Governments

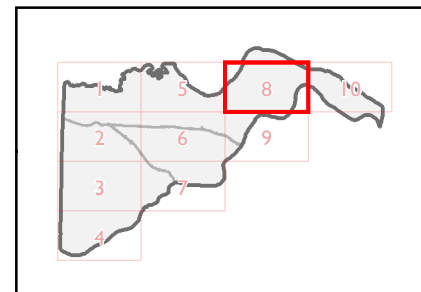



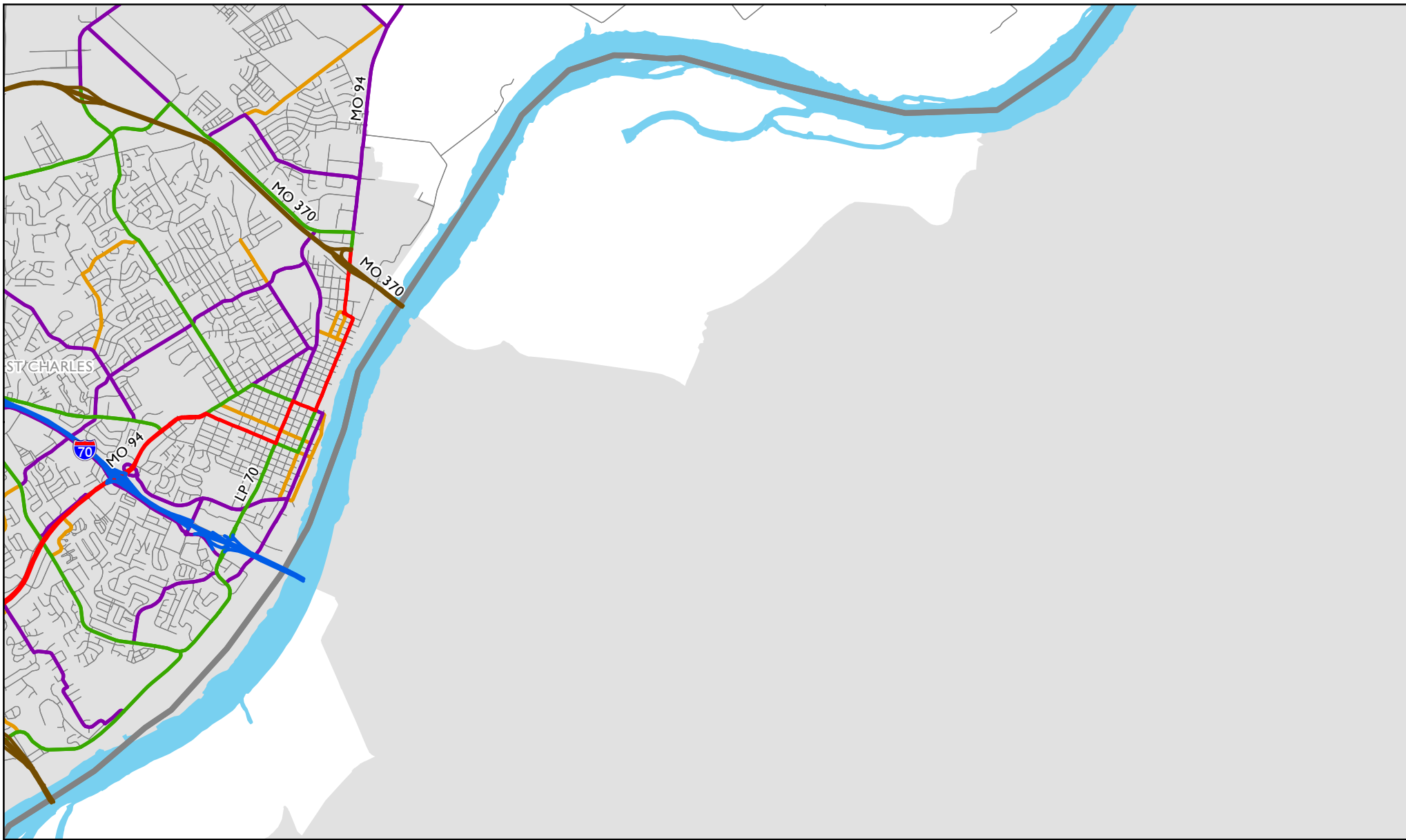


Map 8 of 10
 St. Charles County, Missouri
 March 2018

- Interstate
- Expressway
- Principal Arterial
- Minor Arterial
- Major Collector
- Minor Collector
- Local Road
- - - Planned Minor Arterial
- - - Planned Major Collector
- - - Planned Minor Collector
-  County Boundary
-  Urban Area Boundary

FHWA Approval
 February 7, 2018



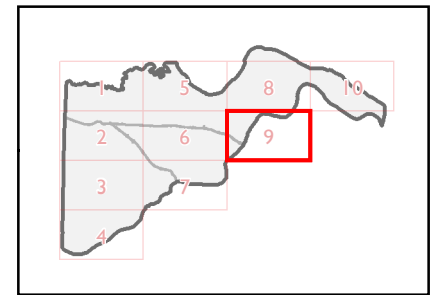


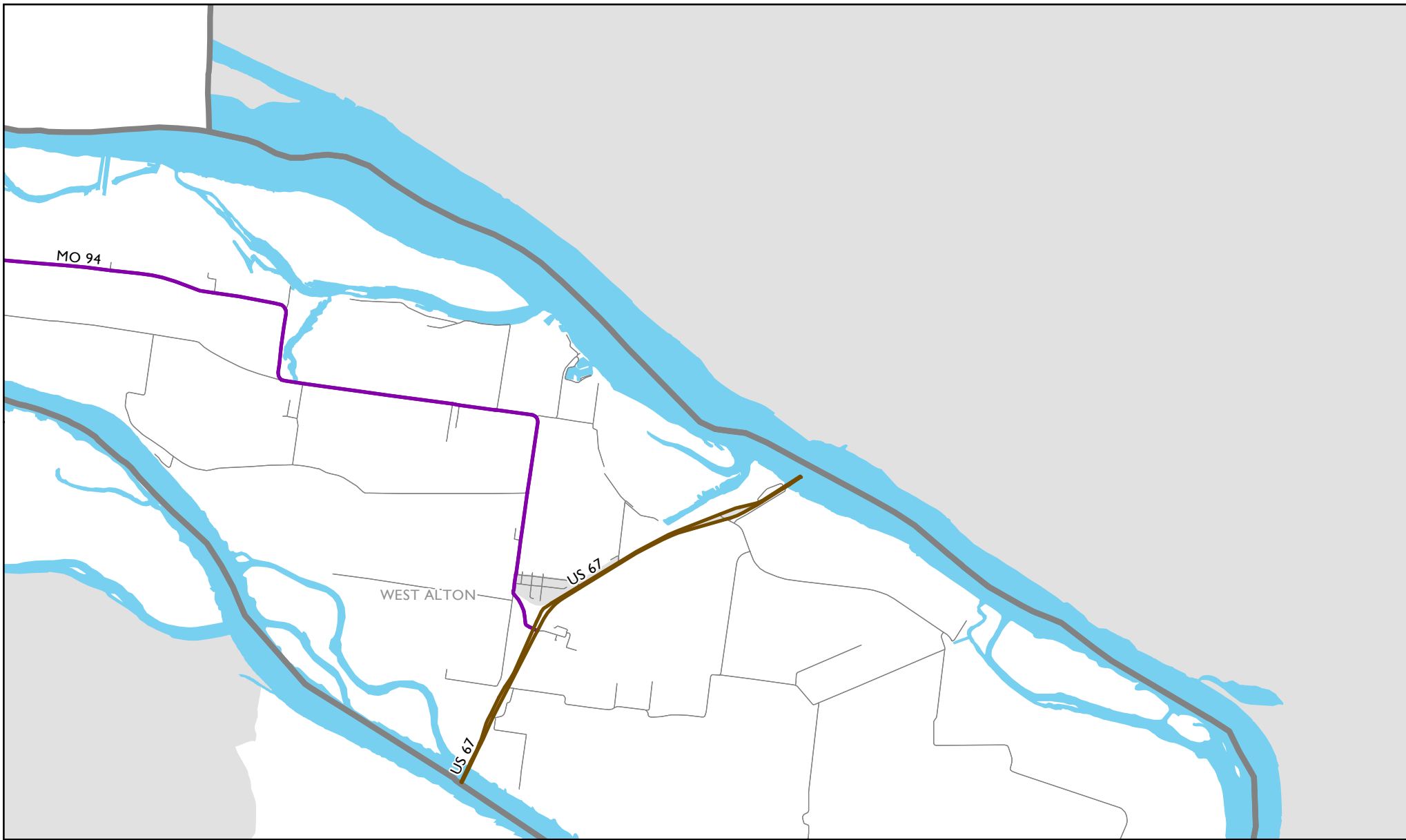
Map 9 of 10
 St. Charles County, Missouri
 March 2018

- Interstate
- Expressway
- Principal Arterial
- Minor Arterial
- Major Collector
- Minor Collector
- Local Road
- - - Planned Minor Arterial
- - - Planned Major Collector
- - - Planned Minor Collector
- County Boundary
- Urban Area Boundary



FHWA Approval
 February 7, 2018

EAST-WEST GATEWAY
 Council of Governments





Map 10 of 10
 St. Charles County, Missouri
 March 2018

- Interstate
- Expressway
- Principal Arterial
- Minor Arterial
- Major Collector
- Minor Collector
- Local Road
- - - Planned Minor Arterial
- - - Planned Major Collector
- - - Planned Minor Collector
-  County Boundary
-  Urban Area Boundary

FHWA Approval
 February 7, 2018

