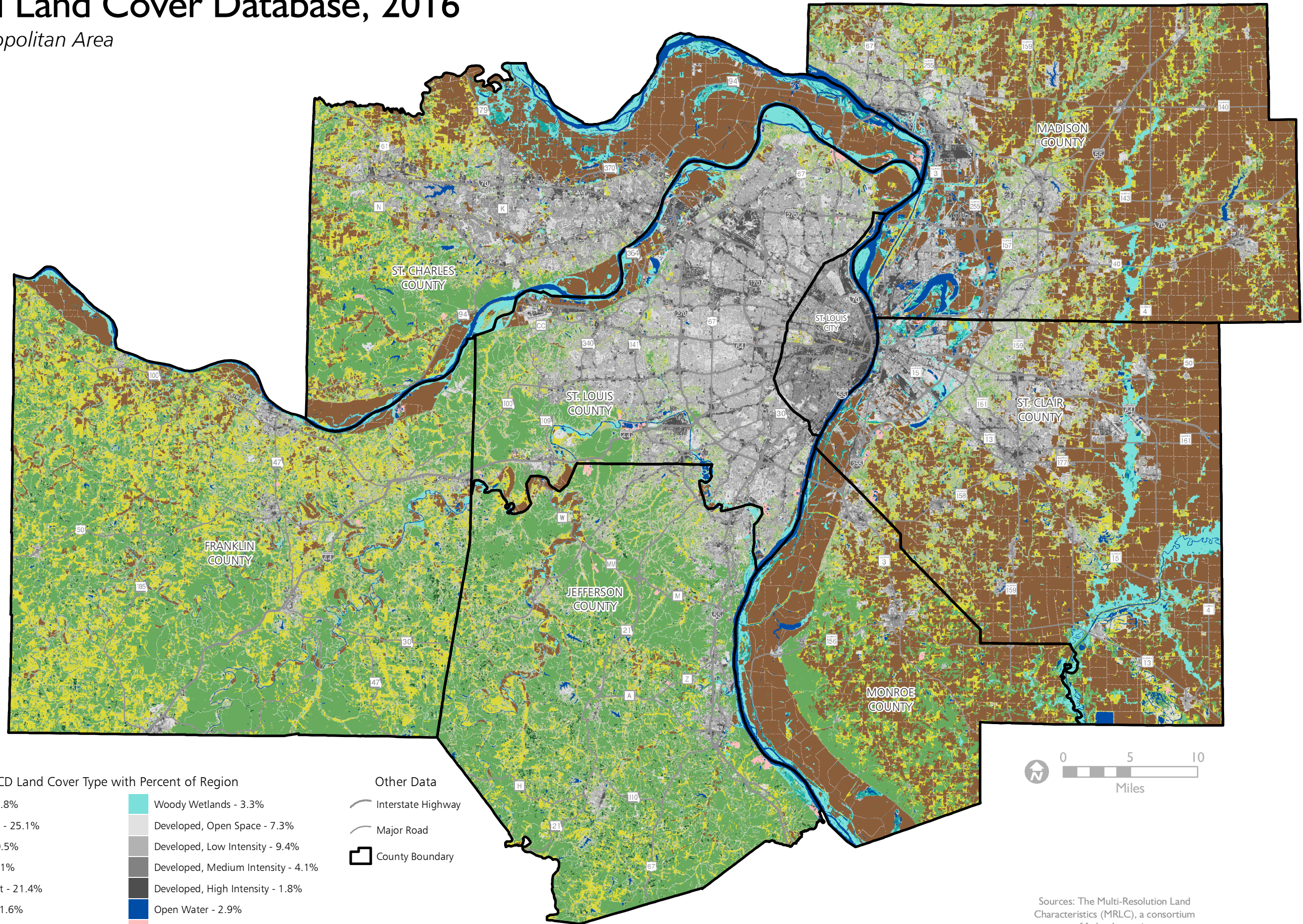


National Land Cover Database, 2016

St. Louis Metropolitan Area

June 2019



NLCD Land Cover Type with Percent of Region	
Hay/Pasture - 10.8%	Woody Wetlands - 3.3%
Cultivated Crops - 25.1%	Developed, Open Space - 7.3%
Herbaceous - 0.5%	Developed, Low Intensity - 9.4%
Shrub/Scrub - 0.1%	Developed, Medium Intensity - 4.1%
Deciduous Forest - 21.4%	Developed, High Intensity - 1.8%
Mixed Forest - 11.6%	Open Water - 2.9%
Evergreen Forest - 0.7%	Barren Land - 0.3%
Emergent Herbaceous Wetlands - 0.6%	

Other Data	
	Interstate Highway
	Major Road
	County Boundary



Sources: The Multi-Resolution Land Characteristics (MRLC), a consortium of federal agencies;
East-West Gateway Council of Governments