

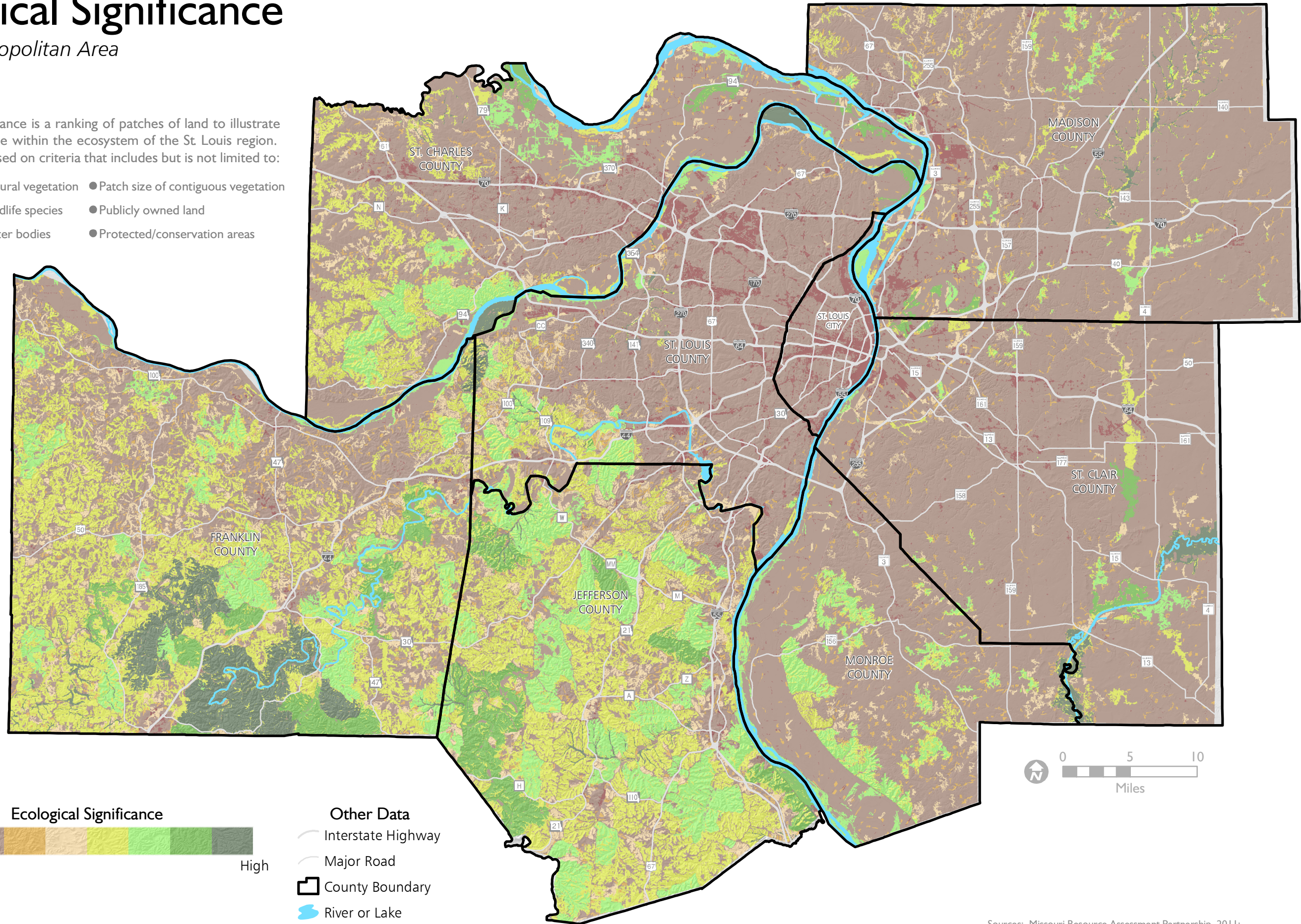
Ecological Significance

St. Louis Metropolitan Area

January 2019

Ecological Significance is a ranking of patches of land to illustrate their relative value within the ecosystem of the St. Louis region. The ranking is based on criteria that includes but is not limited to:

- Occurrences of natural vegetation
- Patch size of contiguous vegetation
- Occurrences of wildlife species
- Publicly owned land
- Distance from water bodies
- Protected/conservation areas



- Other Data**
- Interstate Highway
 - Major Road
 - ▭ County Boundary
 - 🌊 River or Lake

Sources: Missouri Resource Assessment Partnership, 2011;
East-West Gateway Council of Governments

