

# Generalized Soils

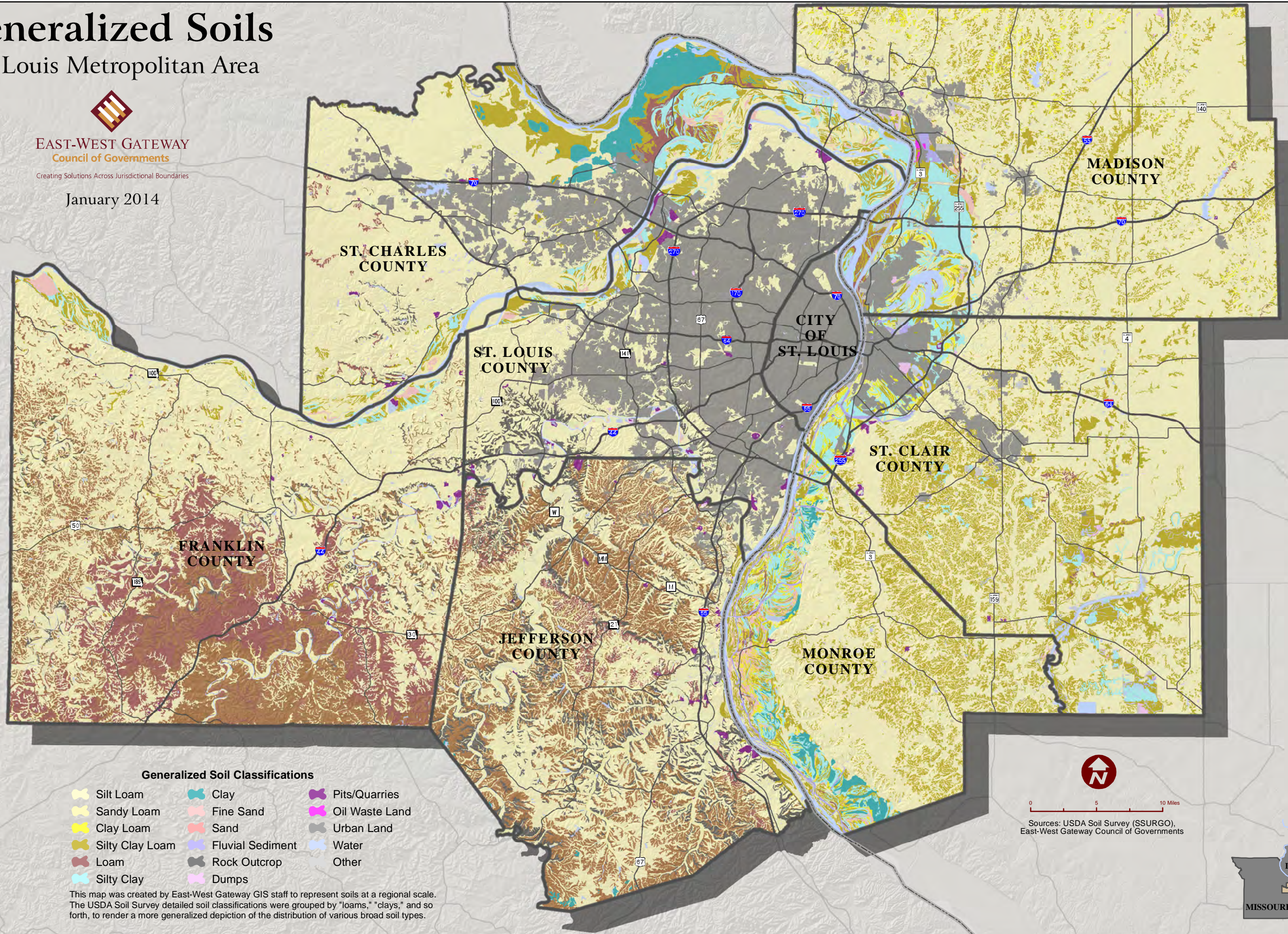
St. Louis Metropolitan Area



**EAST-WEST GATEWAY**  
Council of Governments

Creating Solutions Across Jurisdictional Boundaries

January 2014



### Generalized Soil Classifications

- |                 |                  |                |
|-----------------|------------------|----------------|
| Silt Loam       | Clay             | Pits/Quarries  |
| Sandy Loam      | Fine Sand        | Oil Waste Land |
| Clay Loam       | Sand             | Urban Land     |
| Silty Clay Loam | Fluvial Sediment | Water          |
| Loam            | Rock Outcrop     | Other          |
| Silty Clay      | Dumps            |                |

This map was created by East-West Gateway GIS staff to represent soils at a regional scale. The USDA Soil Survey detailed soil classifications were grouped by "loams," "clays," and so forth, to render a more generalized depiction of the distribution of various broad soil types.



0 5 10 Miles

Sources: USDA Soil Survey (SSURGO), East-West Gateway Council of Governments

