

Change in Population Under Age 18 2000-2010

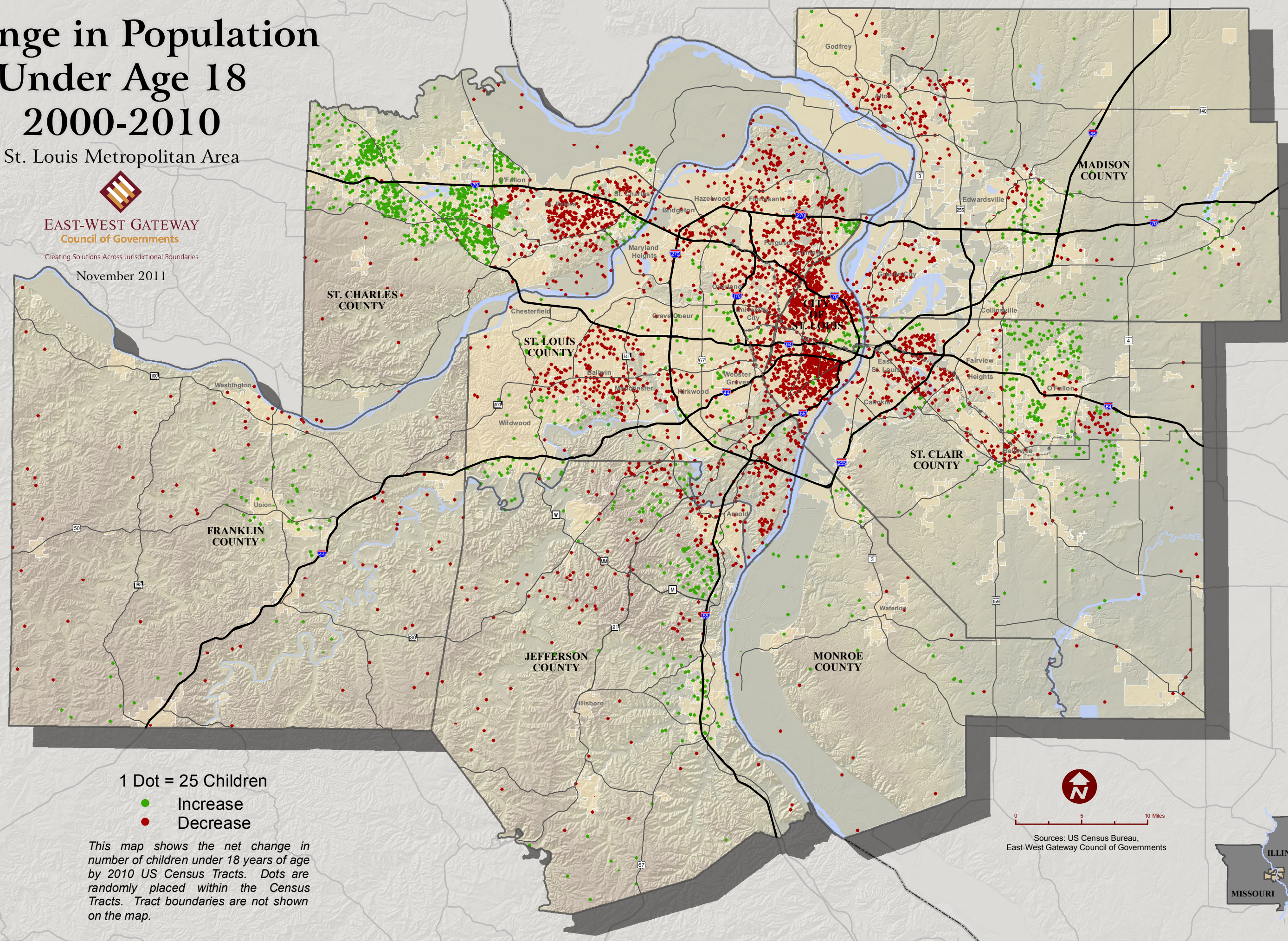
St. Louis Metropolitan Area



EAST-WEST GATEWAY
Council of Governments

Creating Solutions Across Jurisdictional Boundaries

November 2011



1 Dot = 25 Children

- Increase
- Decrease

This map shows the net change in number of children under 18 years of age by 2010 US Census Tracts. Dots are randomly placed within the Census Tracts. Tract boundaries are not shown on the map.



0 5 10 Miles

Sources: US Census Bureau,
East-West Gateway Council of Governments

