

# Open Space

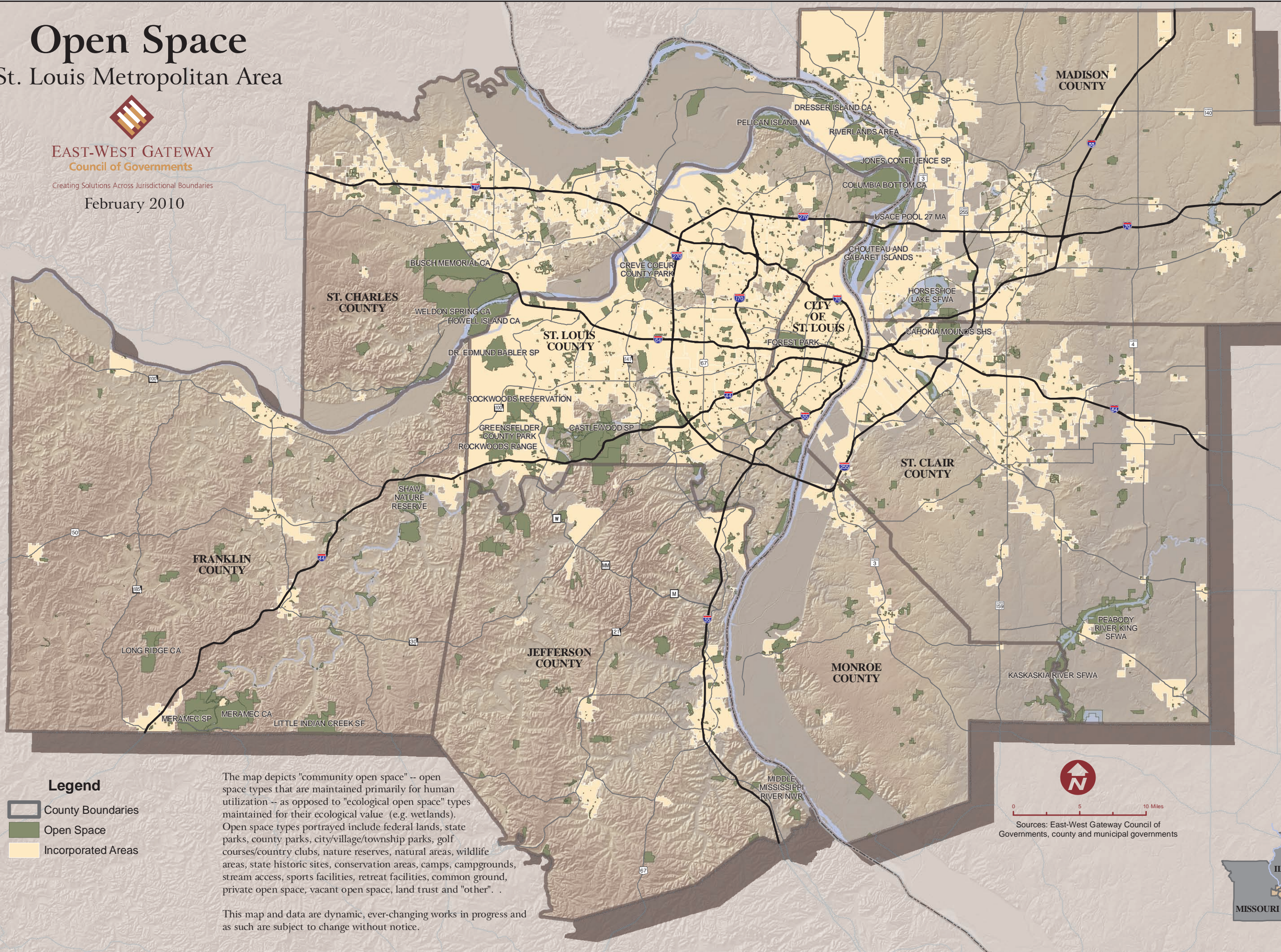
## St. Louis Metropolitan Area



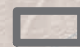

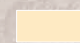
**EAST-WEST GATEWAY**  
Council of Governments

Creating Solutions Across Jurisdictional Boundaries

February 2010

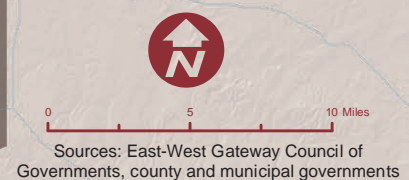


### Legend

-  County Boundaries
-  Open Space
-  Incorporated Areas

The map depicts "community open space" -- open space types that are maintained primarily for human utilization -- as opposed to "ecological open space" types maintained for their ecological value (e.g. wetlands). Open space types portrayed include federal lands, state parks, county parks, city/village/township parks, golf courses/country clubs, nature reserves, natural areas, wildlife areas, state historic sites, conservation areas, camps, campgrounds, stream access, sports facilities, retreat facilities, common ground, private open space, vacant open space, land trust and "other".

This map and data are dynamic, ever-changing works in progress and as such are subject to change without notice.



Sources: East-West Gateway Council of Governments, county and municipal governments

