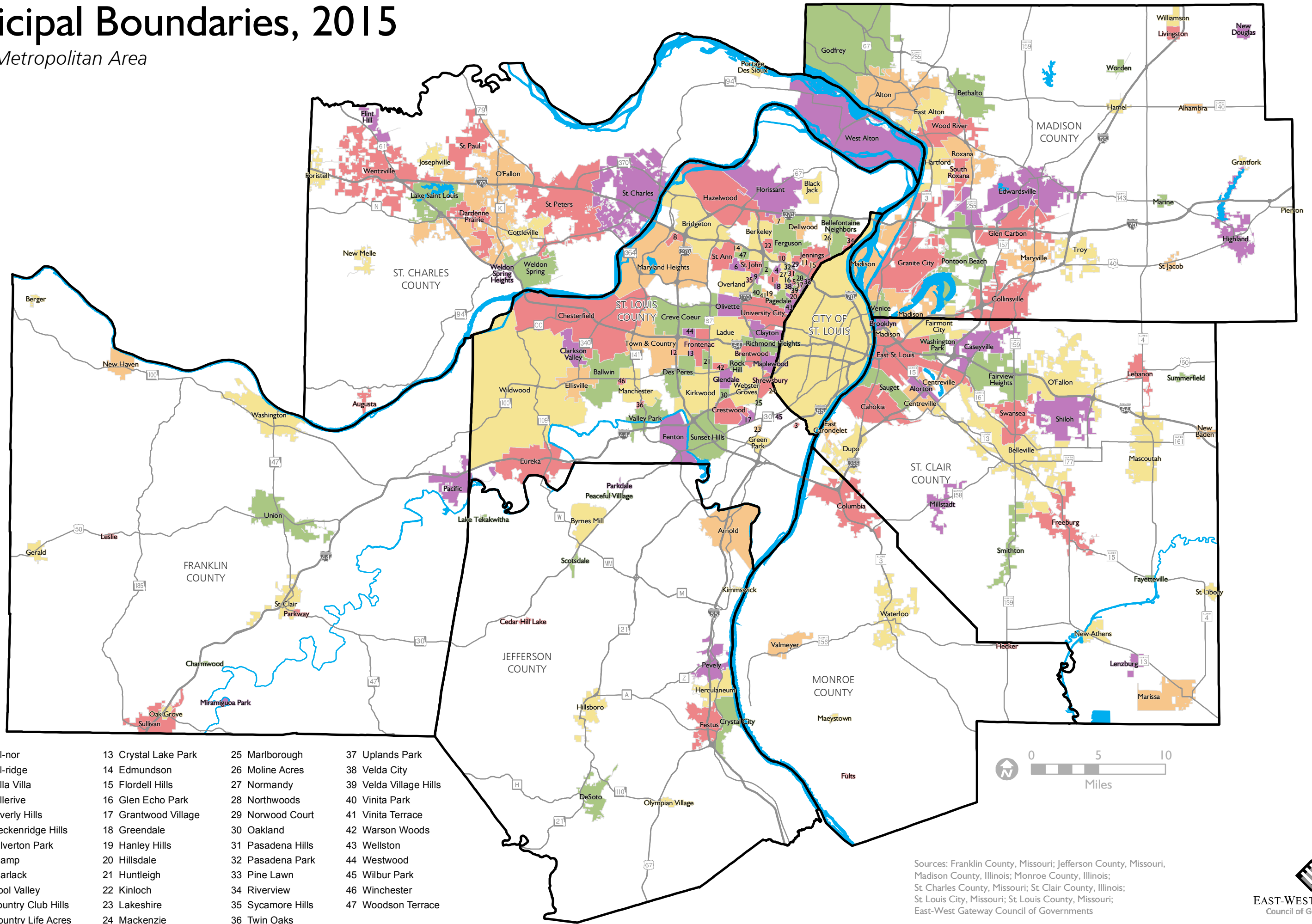


Municipal Boundaries, 2015

St. Louis Metropolitan Area

August 2015



- | | | | |
|-----------------------|----------------------|-------------------|------------------------|
| 1 Bel-nor | 13 Crystal Lake Park | 25 Marlborough | 37 Uplands Park |
| 2 Bel-ridge | 14 Edmundson | 26 Moline Acres | 38 Velda City |
| 3 Bella Villa | 15 Flordell Hills | 27 Normandy | 39 Velda Village Hills |
| 4 Bellerive | 16 Glen Echo Park | 28 Northwoods | 40 Vinita Park |
| 5 Beverly Hills | 17 Grantwood Village | 29 Norwood Court | 41 Vinita Terrace |
| 6 Breckenridge Hills | 18 Greendale | 30 Oakland | 42 Warson Woods |
| 7 Calverton Park | 19 Hanley Hills | 31 Pasadena Hills | 43 Wellston |
| 8 Champ | 20 Hillside | 32 Pasadena Park | 44 Westwood |
| 9 Charlack | 21 Huntleigh | 33 Pine Lawn | 45 Wilbur Park |
| 10 Cool Valley | 22 Kinloch | 34 Riverview | 46 Winchester |
| 11 Country Club Hills | 23 Lakeshire | 35 Sycamore Hills | 47 Woodson Terrace |
| 12 Country Life Acres | 24 Mackenzie | 36 Twin Oaks | |



Sources: Franklin County, Missouri; Jefferson County, Missouri; Madison County, Illinois; Monroe County, Illinois; St. Charles County, Missouri; St. Clair County, Illinois; St. Louis City, Missouri; St. Louis County, Missouri; East-West Gateway Council of Governments