

# Fatal Crashes 2003-2008

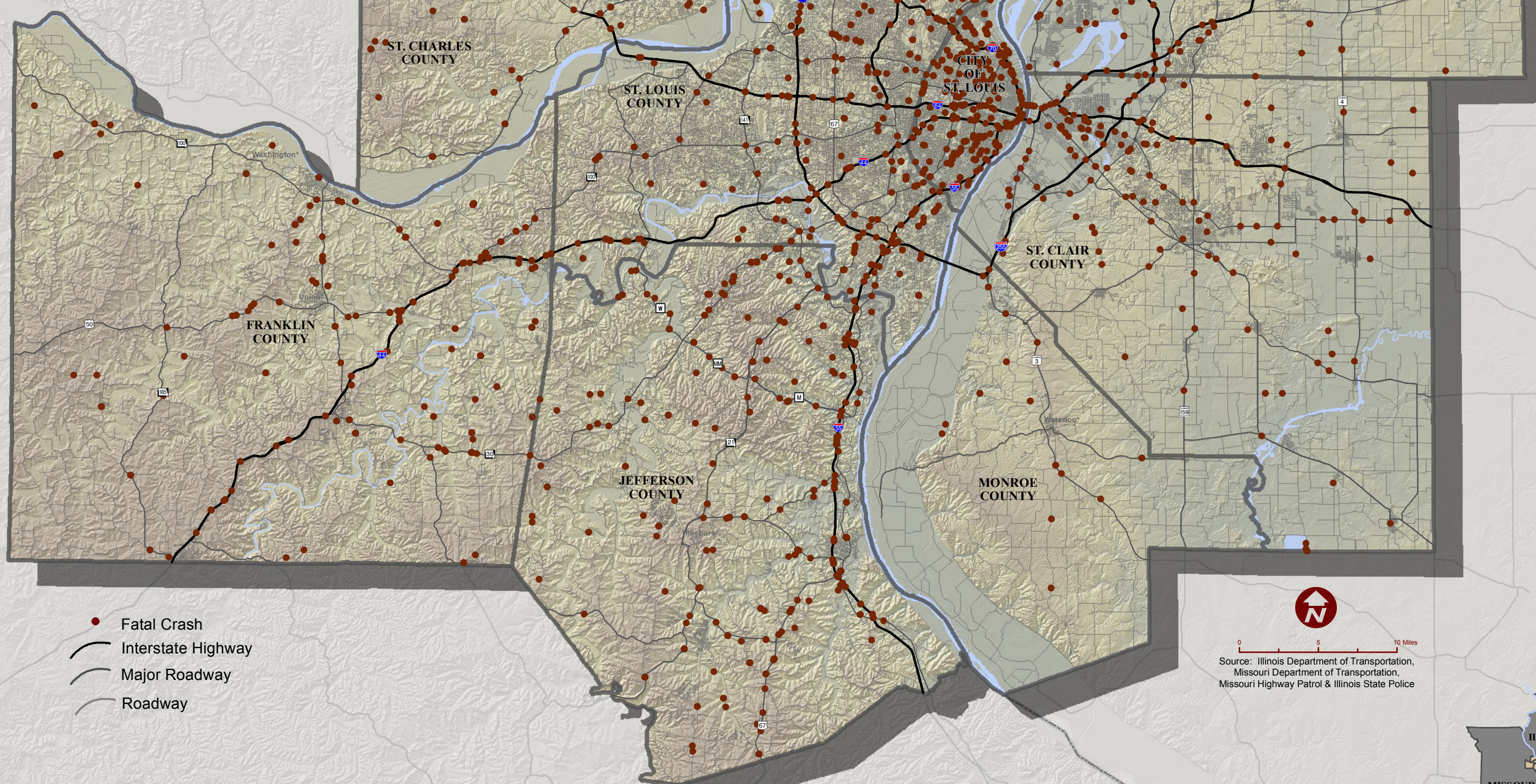
St. Louis Metropolitan Area



EAST-WEST GATEWAY  
Council of Governments

Creating Solutions Across Jurisdictional Boundaries

September 2010



- Fatal Crash
- Interstate Highway
- Major Roadway
- Roadway



0 5 10 Miles

Source: Illinois Department of Transportation,  
Missouri Department of Transportation,  
Missouri Highway Patrol & Illinois State Police

