

# Existing Land Use

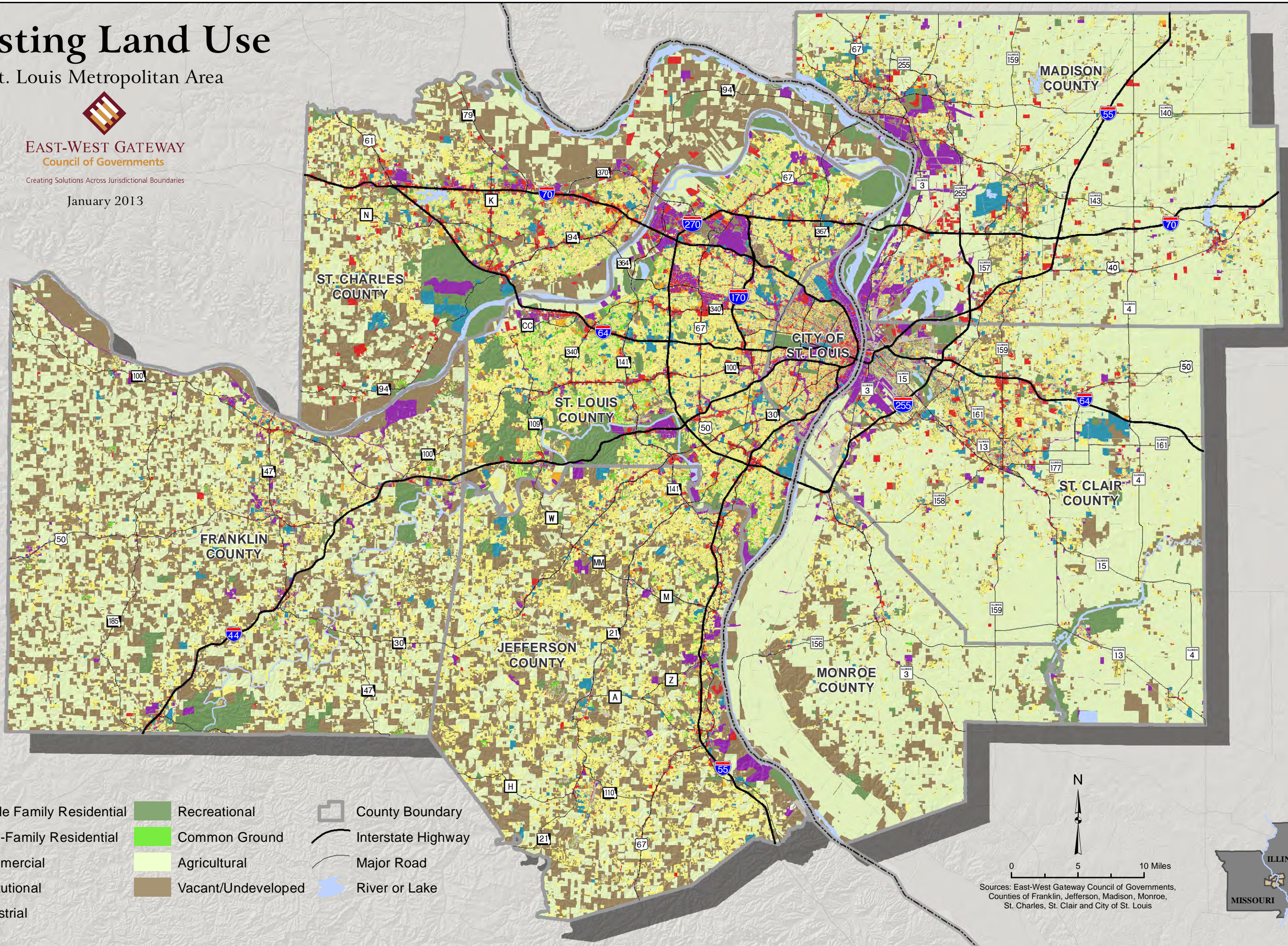
St. Louis Metropolitan Area



**EAST-WEST GATEWAY**  
Council of Governments

Creating Solutions Across Jurisdictional Boundaries

January 2013



## Legend

- |                           |                    |                    |
|---------------------------|--------------------|--------------------|
| Single Family Residential | Recreational       | County Boundary    |
| Multi-Family Residential  | Common Ground      | Interstate Highway |
| Commercial                | Agricultural       | Major Road         |
| Institutional             | Vacant/Undeveloped | River or Lake      |
| Industrial                |                    |                    |

N

0 5 10 Miles

Sources: East-West Gateway Council of Governments, Counties of Franklin, Jefferson, Madison, Monroe, St. Charles, St. Clair and City of St. Louis